



ClarkDietrich.

SOLVING CONSTRUCTION PROBLEMS. FROM FRAME TO FINISH.

When it comes to meeting wall and ceiling challenges, and delivering peace of mind, ClarkDietrich leads by example. Today, we're staying on the forefront by refocusing our resources to bring smarter solutions and better serve our customers.

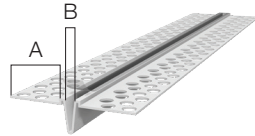
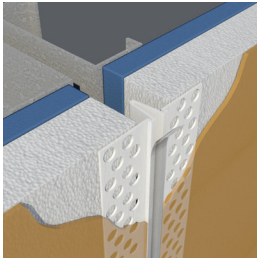
Vinyl Corp., a brand long associated with our company, will now officially bear our name. All of the same trusted products will be available through ClarkDietrich—which offers an ever-expanding lineup of interior and exterior finishing products.

Of course, ClarkDietrich also stands for the broadest portfolio in cold-formed steel framing, plus nationwide technical support and engineering services.

From the highest-quality standard items, to unmatched specialty products, to completely customized offerings, we'll see to it your projects will succeed with durability and precision.

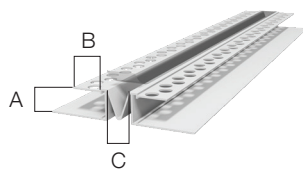
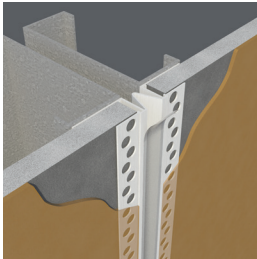
Control Joints

Designed to relieve stress caused by expansion and contraction and control cracking in large areas of walls and ceilings. Removable tape protects expansion slot during construction. Large perforations allow matrix to easily flow through and bond to substrate. Recommended usage is for every 130-140 sq. ft. with no one side being longer than 15 ft. Caulk all intersections, butt joints, ends and corners at time of installation.



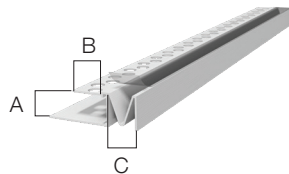
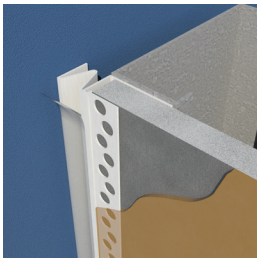
EIFS Control Joint with Removable Tape

Product Code	Finish Thickness	Insulation Thickness	(A) Perforated Flanges	(B) "V" Reveal	Pieces per Box
CJV-16E	1/16"	All	1-1/8"	3/16"	60



DEFS Control Joint with Removable Tape

Product Code	Finish Thickness	(A) Board Thickness	(B) Perforated Flanges	(C) "V" Reveal	Pieces per Box
DCJ-50V	1/16"	1/2"	5/8"	3/16"	30
DCJ-58V	1/16"	5/8"	5/8"	3/16"	30



DEFS "F" Control Joint with Removable Tape

Product Code	Finish Thickness	(A) Board Thickness	(B) Perforated Flanges	(C) "V" Reveal	Pieces per Box
FDCJ-50V	1/16"	1/2"	5/8"	3/16"	30
FDCJ-58V	1/16"	5/8"	5/8"	3/16"	30