

Alumina

Stone Finish

COLORS

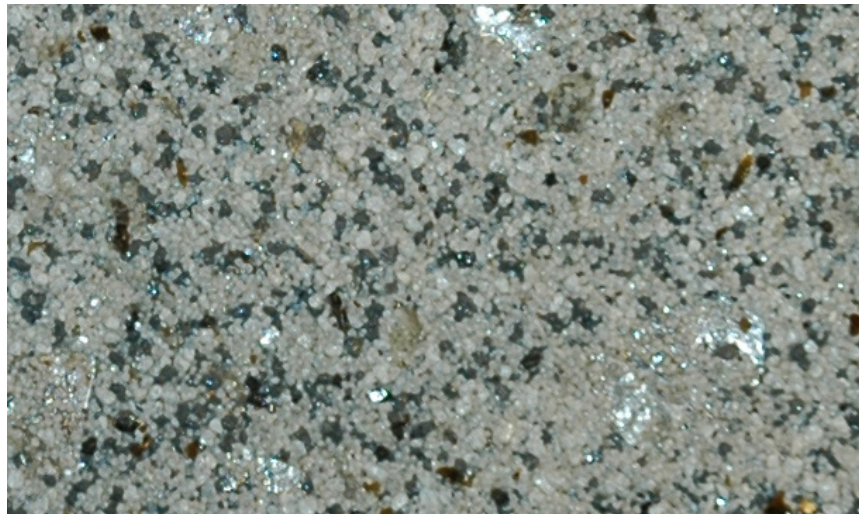
Available in 10 standard colors

PACKAGING

5 gallon pail (19 liter pail)

COVERAGE

Varies depending on application, approximately 75 to 85 ft² (6.9 to 7.9 m²) per pail



DESCRIPTION

Factory-mixed, reflective stone finish consisting of colored aggregate and large black mica flakes in a 100% acrylic transparent binder applied over Master Builders Solutions Tinted Primer. Available in 10 standard colors. Alumina Finish provides a classic granite or marble-like textured finished appearance.

USES

1. Provides a protective, weather-resistant and aesthetically pleasing surface color and texture for Master Builders Solutions Wall Systems.
2. Can also be utilized as a textured finish for poured concrete or unit masonry, conventional stucco, certain insulating concrete forms, and interior veneer plaster or gypsum wallboard.

ADVANTAGES

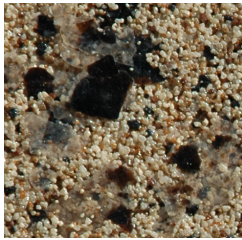
Incorporates light-reflecting mica chips; unique sparkling appearance

100% Acrylic polymer chemistry; long-term durability and weather resistance

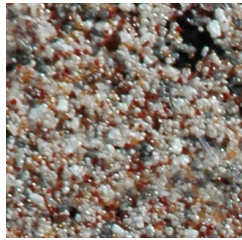
Simulated stone look; supports design freedom, reduces cost

Does not require a sealer; saves time and money

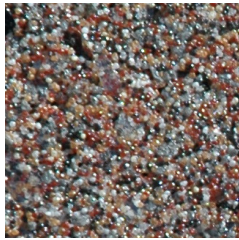
Weather resistant; repels water and resists wind-driven rain



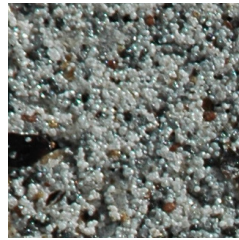
Chalcedony



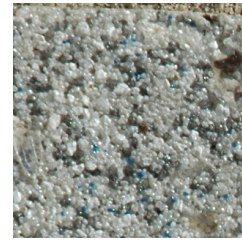
Crystal Rose



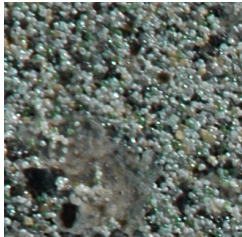
Galena



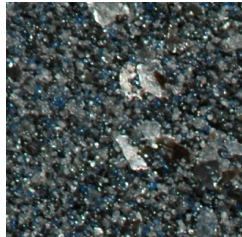
Iridium



Muscovite



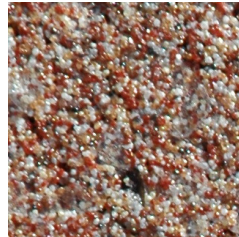
Nautilus



Obsidian



Perlino



Pomagranate



Sunstone

TECHNICAL SUPPORT

Consult Master Builders Solutions Technical Services Department at +1 (800) 589-1336 for specific recommendations concerning all other applications. Consult the Wall Systems website at www.master-builders-solutions.com/en-us, for additional information about products and systems and for updated literature.

MIXING

1. Gently mix the contents of the pail for 1 minute using a low RPM 1/2 inch drill equipped with a mixing paddle such as a Demand Twister or a Windlock B-MEW, B-M1 or B-M9.
2. Additives are not permitted.
3. Close container when not in use.
4. Clean tools and equipment with water immediately after use. Dried material can only be removed mechanically.

APPLICATION

1. Substrate shall be dry, clean, sound and free of releasing agents, paint or other residue or coatings. Verify substrate is flat, free of fins or planar irregularities greater than 6.4 mm in 3 m (1/4" in 10')
2. Apply Master Builders Solutions Tinted Primer to substrate in accordance with current Master Builders Solutions Tinted Primer product bulletin. Master Builders Solutions Tinted Primer shall be of corresponding color for selected Alumina Finish color. Allow Master Builders

Solutions Tinted Primer to dry to the touch before proceeding to Alumina Finish application.

3. Apply a tight coat of Alumina Finish approximately 1.6 mm (1/16") to 3 mm (1/8") thick, to cure the Master Builders Solutions Tinted Primer with a clean, stainless steel trowel.
4. Maintain a wet edge on Alumina Finish by applying and leveling continually over the wall surface.
5. Work Alumina Finish to corners, joints or other natural breaks and do not allow material to set up within an uninterrupted wall area.

6. Float the Alumina Finish with a gentle figure-8 motion, cleaning the float often.

NOTE: Alumina Finish requires the use of Master Builders Solutions Tinted Primer over the Base Coat prior to application of Alumina Finish. When ordering, the name of the primer will match the name of the finish; e.g. "Crystal Rose Alumina" will need "Crystal Rose Primer."

LIMITATIONS

1. Protect Alumina Finish during transportation and installation to avoid physical damage.
2. Store Alumina Finish in a cool, dry place protected from freezing. Store at no less than 10 °C (50 °F). Protect from extreme heat and direct sunlight. Shelf life is two years when unopened and stored as directed.
3. Do not apply Alumina Finish in ambient temperature below 10 °C (50 °F). Provide

supplementary heat during installation and drying period (at least 24 hours after installation and until dry) when temperatures less than 10 °C (50 °F) prevail.

4. Do not apply Alumina Finish to frozen surfaces.
5. Master Builders Solutions Wall Systems will submit a sample of Alumina Finish for color approval only. Samples for job approval must be made in the field by the applicator, and approved prior to ordering.
6. Sufficient finish should be ordered to complete the entire project with one production run to alleviate potential batch color variations of the natural aggregate.
7. Alumina Finish and corresponding Master Builders Solutions Tinted Primer must be ordered separately.
8. Do not exceed 10 oz of water per 5 gallon pail.

HEALTH, SAFETY AND ENVIRONMENTAL

Read, understand and follow all Safety Data Sheets and product label information for this product prior to use. The SDS can be obtained by visiting www.master-builders-solutions.com/en-us, e-mailing your request to mbsbcst@mbcc-group.com or calling +1 (800) 433-9517. Use only as directed.

IN CASE OF EMERGENCY: Call CHEMTEL +1 (800) 255-3924 or if outside the US or Canada, +1 (813) 248-0585.

For the most current version of this literature, please visit our website at www.master-builders-solutions.com/en-us.