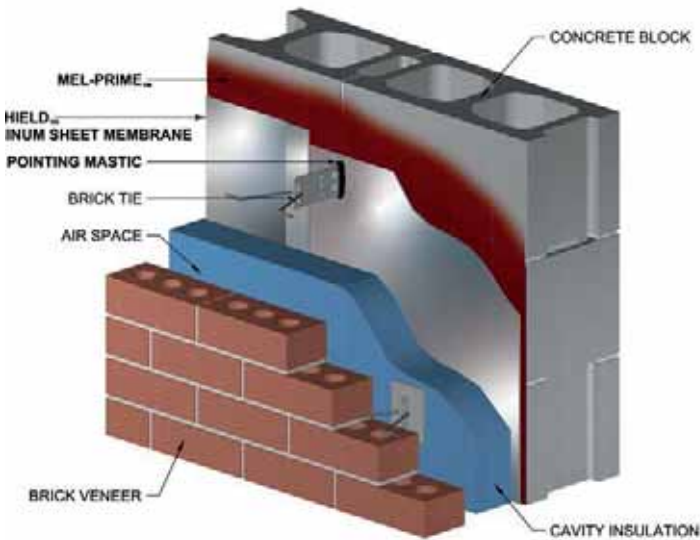


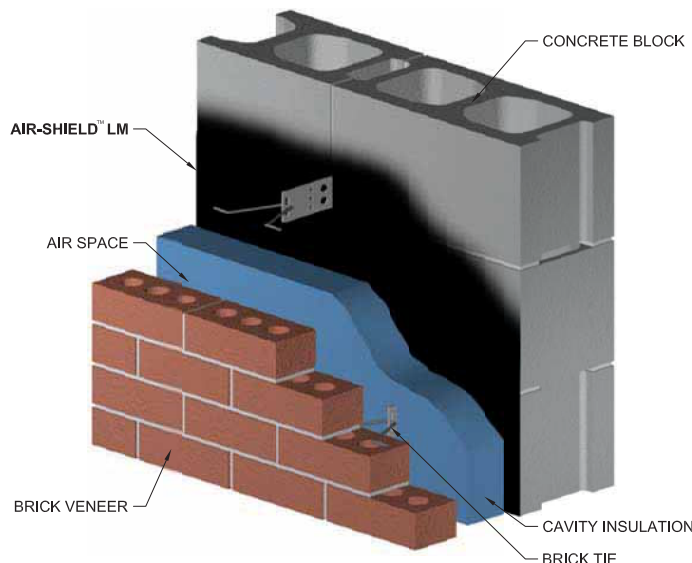
## AIR-SHIELD

self-adhering air/vapor and liquid moisture barrier is a part of a total system to complete the building envelope. It is a roll-type product that is nominally 40 mils thick. This unique, self-adhesive membrane, protected by a special release paper, is strong and durable. It remains flexible when surface mounted and will adhere to most primed surfaces at minimum temperatures of 40° F (4° C). [A low temperature version for applications between 20° F (-7° C) and 60° F (16° C) is also available.]



## AIR-SHIELD ALUMINUM SHEET MEMBRANE

self-adhering air/vapor and liquid moisture barrier is a roll-type product that is nominally 40 mils thick. The membrane's controlled thickness is fabricated from aluminum bonded to specially modified asphalt.



## AIR-SHIELD LM

is a liquid applied, water-based, polymer-modified air/vapor and liquid moisture barrier. AIR-SHIELD LM cures to form a tough, seamless, elastomeric membrane, which exhibits excellent resistance to air and moisture transmission. An all-season version is available for use in lower temps.