

1500 SERIES MULTI-COMPONENT GUNS - 1:1 MIX RATIOS

Bulletin 293B

The Best Just Keeps Gettin' Better!®

✓Bulk

✓Sausage

✓Cartridge

✓Multi-Component

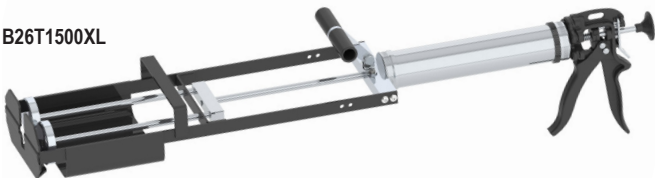
✓Accessories

B-LINE MANUAL MODELS

B26T1500X



B26T1500XL



FEATURES:

- Smooth & powerful, Highest thrust, 26:1 ratio drive.
- Increased gun life due to Albion's adjustment screw technology.
- Double the life of the tool with Albion's Double Gripping Plates.
- Cartridges snap firmly into place.

AVAILABLE MODELS:

B26T1500X (1:1 750 x 750ml)

B26T1500 Side Load (1:1 750 x 750ml)

B26T1500XL Stand-up Extension (1:1 750 x 750ml)

B26T1500L Stand-up Extension Side Load (1:1 750 x 750ml)

18V CORDLESS MODELS

E18T1500X



Powered by Milwaukee® REDLITHIUM™ Battery Technology

E18T1500XL



FEATURES:

- Powerful 18V cordless drive.
- Long lasting battery, with fast 30 min. recharge. **Powered by Milwaukee® REDLITHIUM™ Battery Technology.**
- Quick stop and start. Instant drive disengagement for no-drip control.
- Ergonomic design reduces wrist strain and fatigue.
- Variable speed trigger with max speed dial for maximum control.
- Dosage control via indexed rod.
- All models include: (1) 982-2 18V Battery Pack and (1) 982-21 Charger.

AVAILABLE MODELS:

E18T1500X (1:1 750 x 750ml)

E18T1500 Side Load (1:1 750 x 750ml)

E18T1500XL Stand-up Extension (1:1 750 x 750ml)

E18T1500L Stand-up Extension Side Load (1:1 750 x 750ml)

***Cordless battery powered tools are not recommended for epoxy crack injection. Pneumatic tools are a better choice.*

AT-LINE PNEUMATIC MODELS

AT1500X-S



PATENTED Suitcase Handle

AT1500X



FEATURES:

- Patented Suitcase Handle for convenient, ergonomic dispensing.
- Quickly change over from one-hand (suitcase) to two-hand configuration.
- For spray applications use adapter p/n 1042-2.
- Quick Stop due to Albion's unique quick exhaust design.
- Responsive trigger control with easy access regulator, and pneumatic forward and reverse.
- Trigger / regulator replacement is quick and inexpensive. (p/n 957-13).
- Truly functional upright position allows easy load and unload.

AVAILABLE MODELS:

AT1500X (1:1 750 x 750ml)

AT1500X-S Suitcase (1:1 750 x 750ml)

AT1500 Side Load (1:1 750 x 750ml)

AT1500-S Suitcase Side Load (1:1 750 x 750ml)



Optional (1001-1) Hard Plastic Carry Case for AT-Line Guns



1250 N Church St., Moorestown, NJ 08057 | 856.235.6688 | Service@albioneng.com | www.albioneng.com

202006