

EZ Path® Series 44NEZ Smoke & Acoustical Pathway



EZ Path® Series 44NEZ Smoke & Acoustical Pathway is a pathway device designed to allow cables to penetrate non-fire-rated walls and floors without the need for smoke sealing. This device features a built-in smoke sealing system that automatically adjusts to the amount of cables installed. Once installed in a barrier, cables can be easily added or removed at any time without the need to remove or reinstall caulking materials.

Its rectangular profile allows a maximum number of cables to be installed in a relatively small area. Individual pathways measures approximately 7-1/2 in (191 mm) x 7-1/8 in (181 mm) and are adjustable to accommodate wall and floor thicknesses between 4 in (102 mm) and 8 in (203 mm).

Applications

EZ Path® Series 44NEZ Smoke & Acoustical Pathway is designed for easy installation in non-fire-rated walls and floors. Tested and approved cable capacities range from 0 to 100% visual fill. The device easily fits into 6 in (152 mm) diameter openings or multiple devices into a slot of up to 6 in (152 mm) x 22-1/2 in (572 mm).

EZ Path® Series 44NEZ Smoke & Acoustical Pathway provides exceptional cable capacity. Multiple ganged devices utilizing available triple or quintuple wall plates provide additional capacity or segregation of cables by use, type, installer or vendor as desired.

Specifications

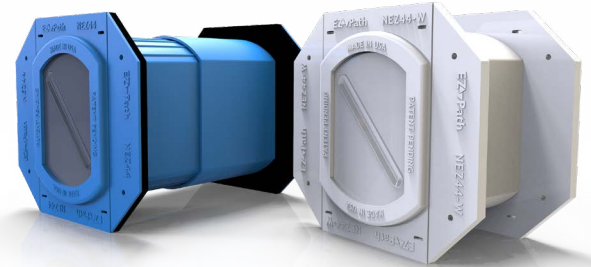
All data, video, and communications cable bundles shall utilize an enclosed smoke and acoustical pathway device wherever said cables penetrate non-fire-rated walls and floors. The smoke and acoustical pathway shall contain a built-in sealing system and shall automatically adjust to the installed cable loading and shall permit cables to be installed, removed, or retrofitted without the need to remove or reinstall acoustical materials. The pathway shall provide an achievable STC rating of greater than or equal to the STC rating of the specific underlying construction per ASTM E90-09.

Specified Divisions

Division 9	09 80 00	Acoustic Treatments
Division 26	26 00 00	Electrical
Division 27	27 00 00	Communications

PERFORMANCE

Max Cable Loading (Visual Fill)	L Rating (CFM/Device)
0%	Less than 1
100%	1.5
Note: L Ratings Tested According to Air Leakage Test Procedure As Outlined in UL1479 without a Fire Test. For use in non-fire-rated construction only.	
Plenum tested to UL2043	
Sound Transmission Classification (STC)	50 (Relates to specific construction) (ASTM E 90-09)



Patent Pending



Patent Pending

Features & Benefits

- Cable management by use, type and vendor
- Zero maintenance - easy moves, adds and changes
- Excellent acoustical performance; low smoke leakage ratings
- Easy to install - can be installed horizontally and vertically
- Clean, engineered appearance
- Pathway adjusts to accommodate wall and floor thicknesses between 4 in (102 mm) & 8 in (203 mm)
- Cable capacity continuity with EZD44S2 fire rated pathway

PHYSICAL PROPERTIES

Shell Composition	Non-Halogenated, V-0, ABS/PC Co-Polymer
Seal	Low Smoke Silicone
Cable Loading Area	13.044 in ²
Allowable Cable Fill	0 - 100%
In Service Temperature	-30°F (-34°C) - 130°F (54°C)
Storage Temperature	Less than 130°F (54°C)
Shelf Life	No Limit

EZ Path® Series 44NEZ Smoke & Acoustical Pathway



Limitations

This product has been designed to be safe with plastics. It has been used extensively and successfully with various types of plastic pipes, tubes, and plastic cable insulations. Variations in these materials, however, make it impossible to guarantee compatibility. STI strongly recommends that the user consults with the pipe, tubing, or cable manufacturer in question regarding any known sensitivities or potential restrictions before applying this product.

Cable Installations

Cables may easily be added or removed at any time without removing or reinstalling the smoke and acoustical seal. Cables may be added individually or in bundles. Wrapping ends with a low-friction tape facilitates cable insertion. A self-adjusting cable throat automatically adjusts to accommodate the cable bundle as it passes through the pathway.

Maintenance

No maintenance of the pathway is normally required. The exterior seals of the device should be inspected before and after any modifications to the cable bundle.

System Selection

To find your firestop system or create a submittal, visit <https://systems.stifirestop.com/> to use System Search & Submittal Builder. You may also visit the [UL Online Certifications Directory/UL Product iQ™](#) for complete listings. (Firestop Systems).

Technical Service

Specified Technologies Inc. provides toll free technical support to assist in product selection and appropriate installation design. UL System designs suitable for submittal or specification purposes are available on request. A complete library of technical information is provided at the company's website www.stifirestop.com including Safety Data Sheets (SDS's).

Precautionary Information

The use of this device is subject to local, regional and national codes. Consult the local Building Code Official or Authority Having Jurisdiction regarding any regional or local requirements that might influence the selection or use of this product. Note: For use in non-fire-rated construction only.

Availability

EZ Path® Products are available from Specified Technologies Inc. (STI) authorized distributors. For additional purchasing and technical information or for the names and locations of the nearest representative and/or distributor, regarding this and other Specified Technology products, please call 1-800-992-1180 or visit www.stifirestop.com.

ORDERING INFORMATION - NON-FIRE-RATED WALLS AND FLOORS

Catalog Number	UPC Number	Description	(UOM) Qty.	Case Qty.	Weight (Each)
NEZ44	730573111727	Smoke and Acoustical Pathway	1	4	1.92 lbs (0.89 kg)
NEZ44-W	730573111734	Smoke and Acoustical Pathway (White)	1	4	1.92 lbs (0.89 kg)
NEZD344	730573111772	Smoke and Acoustical Pathway 3-Gang Kit [16" (406mm) Wall Studs]	1	1	5.27 lbs (2.39 kg)
NEZD344-W	730573111789	Smoke and Acoustical Pathway (White) 3-Gang Kit [16" (406mm) Wall Studs]	1	1	5.27 lbs (2.39 kg)
NEZD544	730573111796	Smoke and Acoustical Pathway 5-Gang Kit [24" (610mm) Wall Studs]	1	1	7.94 lbs (3.60 kg)
NEZD544-W	730573111802	Smoke and Acoustical Pathway (White) 5-Gang Kit [24" (610mm) Wall Studs]	1	1	7.94 lbs (3.60 kg)

ORDERING INFORMATION - NON-FIRE-RATED CEILINGS

NEZ44CK	730573111741	Smoke and Acoustical Pathway Ceiling Kit (White)	1	4	1.95 lbs (4.23 kg)
NEZ344CK	730573111819	Smoke and Acoustical Pathway 3-Gang Ceiling Kit (White)	1	4	1.95 lbs (4.23 kg)

IMPORTANT NOTICE: ALL STATEMENTS, TECHNICAL INFORMATION, AND RECOMMENDATIONS CONTAINED HEREIN ARE BASED UPON TESTING BELIEVED TO BE RELIABLE, BUT THE ACCURACY AND COMPLETENESS THEREOF IS NOT GUARANTEED.

STI TYPICALLY WARRANTIES ITS PRODUCTS FOR ONE FULL YEAR. FOR COMPLETE DETAILS OF OUR STANDARD WARRANTY, PLEASE VISIT WWW.STIFIRESTOP.COM/LEGAL/WARRANTY

MADE IN THE USA - © 2021 SPECIFIED TECHNOLOGIES INC.

