



# FOUNDATION WALL WATERPROOFING



WATERPROOFING

## ROOFING WATERPROOFING WALLS CIVIL ENGINEERING



SOPREMA is an international manufacturer specializing in the production of waterproofing and insulation products, as well as vegetative and soundproofing solutions, for the building and civil engineering sectors.

SOPREMA.US • 1.800.356.3521      SOPREMA.CA • 1.877.MAMMOUTH



## COLPHENE® LM BARR

COLPHENE LM BARR and COLPHENE LM BARR SPRAY are single component, liquid applied, moisture curing, elastomeric membranes that are ideal for positive side waterproofing of below grade foundation walls and can be applied using rollers, trowels, squeegees or spray equipment.

### ADVANTAGES

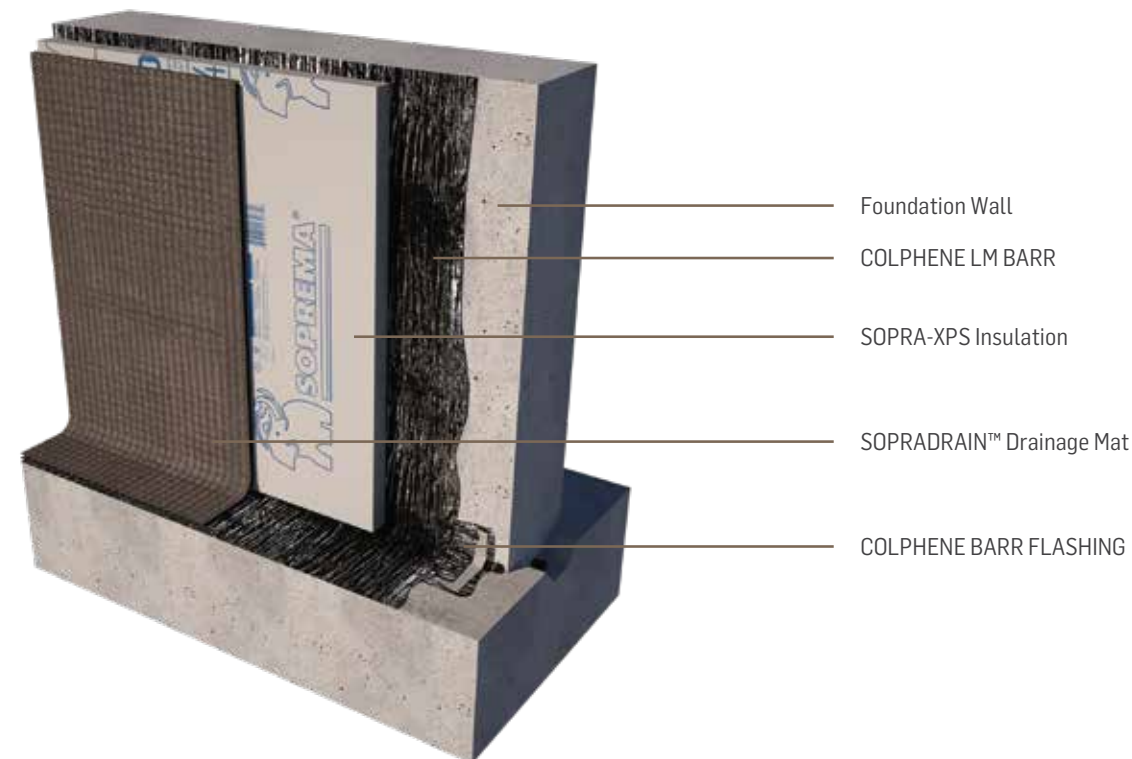
- The first spray grade STPE waterproofing membrane on the market making installation fast and easy with very minimal preparation work – truly a time saving solution!
- Polyether/STPE technology combines the best of both worlds – provides persistent adhesion to concrete while allowing movement of the building with extremely high elongation properties
- One pass application up to 120 mils (3.0 mm)
- Moisture cure allows COLPHENE LM BARR to bond to green concrete which allows you to coat the concrete sooner as opposed to emulsion-type or cutback products which can blister with moisture
- High solids content – meaning it won't shrink or pull away from the concrete - i.e. 120 mils is 120 mils
- Fast cure reduces construction sequencing time by reducing backfill wait times
- Rain safe in minutes

### TESTING & APPROVALS

Meets the testing and performance requirements of:

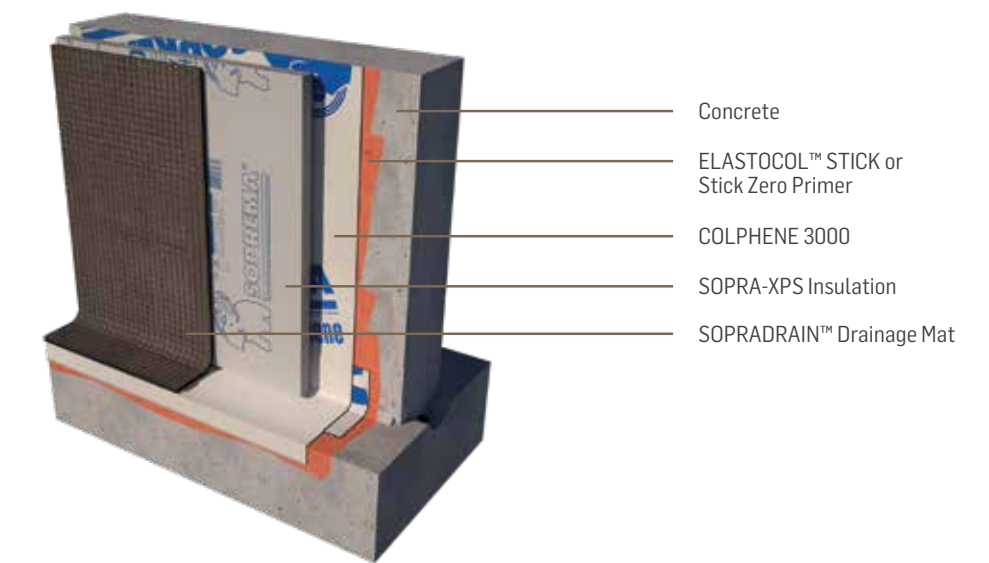
ASTM D 5385: Standard Test Method for Hydrostatic Pressure Resistance of Waterproofing Membranes

ASTM C 836: Standard Specification for High Solids Content, Cold Liquid-Applied Elastomeric Waterproofing Membrane for Use with Separate Wearing Course



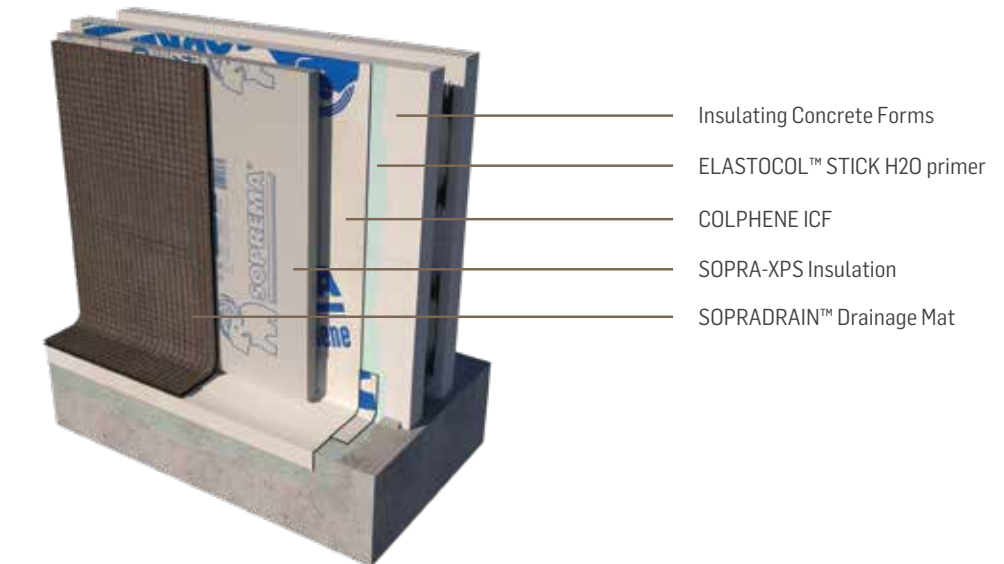
## COLPHENE® 3000

COLPHENE 3000 is a specification driven 60 mil thick, self-adhered, sheet membrane composed of a proprietary formulation of elastomeric styrene-butadiene-styrene (SBS) polymer modified bitumen applied to a tough tri-laminate woven HDPE composite facer for exceptional puncture resistance. It comes with an easily disposable plastic release film on the back. It is used with a SOPREMA primer as primary waterproofing on foundation walls above the water table.



## COLPHENE® ICF

COLPHENE ICF is a more pliable 40 mil waterproofing membrane that is also used above the water table and is similar to the COLPHENE 3000 but can be used in contact with the insulating concrete forms that remain in place around poured concrete foundation walls. It is also made with the same tough HDPE composite facer and utilizes a paper release film.



**The tri-laminate composite facer has 131 lbf of puncture resistance and over 13,000 lbf/in<sup>2</sup> of tensile strength!**

### ADVANTAGES

- 60 and 40 mil thick SBS polymer modified asphalt waterproofing
- Exceptional puncture resistance
- High tensile strength
- Factory controlled thicknesses
- Clean up is easy and non-hazardous
- No waiting for cure times
- Dependable adhesion with primer + membrane

### SOPREMA® primers, accessories & tools

- COLPHENE BAR Flashing
- ELASTOCOL STICK primers (refer to installation instructions for use)
- Two-handed roller
- Utility knife and gloves
- Heavy duty roller frame and 3/8" nap roller
- Measuring tape
- Safety glasses

