

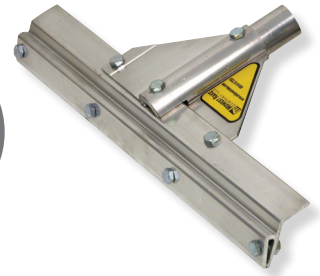
SQUEEGEES - APPLICATION

Application Squeegees



Step 1 - Choose the frame

Midwest Rake® branded application squeegee frames are the standard in the Protective Coating industry. These "clamp-style" frames make it easy to change blades.



Frame Width

Description	Item No. 16"	Item No. 24"	Item No. 30"	Item No. 36"	Item No. 48"
Application Squeegee Frame with THA*	78000	78010	78015	78020	78040
Application Squeegee Frame with 66" PCAH**	78100	78110	78115	78120	78140
Application Squeegee Frame with 82" PCAH**	78200	78210	78215	78220	78240

*Threaded Handle Adapter **Powder-Coated Aluminum Handle

What squeegee notch width / notch depth should I use to apply 10 mils of epoxy? At Midwest Rake®, the answer is **always** refer to our "Nominal Wet Film Thickness Chart" to determine the appropriate notch width / notch depth required for your job. Our squeegee blades have a unique design - shallower depth notches enable Midwest Rake® squeegees to stand out from the competition ensuring a consistent and tight range of wet film thickness delivery.

NOMINAL WET FILM THICKNESS CHART

Description	Notch Width	Notch Depth	Nominal Wet Film (WFT) Delivered in Mils*
1/8" V-Notch	1/8"	1/16"	8 - 12
3/16" V-Notch	3/16"	3/32"	15 - 20
1/4" V-Notch	1/4"	1/8"	20 - 28
3/8" V-Notch	3/8"	1/4"	30 - 45
1/2" V-Notch	1/2"	3/8"	46-55

*The chart conversions to the right are not absolutes and are provided to help guide blade selection. Many factors can contribute to the actual wet film thickness produced; including: pressure exerted on the blade, porosity of the substrate (concrete) being coated, material being used and if and how the back-roll is completed. If you have any questions or would like to discuss the particulars of your project - please contact us at 844-SEYMOUR and we would be more than happy to provide guidance in the application squeegee selection process.

Step 2 - Choose the blade

Our blades are available in Neoprene, EPDM and Red Rubber. All blades are "reversible" (notched on both sides). Each type is available in a variety of head widths and notch sizes.



Neoprene

EPDM

Chemical Resistant / Non-marking

Red Rubber

Chemical Resistant / Non-marking

EXCLUSIVE

Rubber is also available by the roll.



Our standard Neoprene, EPDM and Red Rubber are available in 25' rolls. Please see the chart below for product information.

Description	Standard Neoprene Notched on both sides	Standard EPDM Notched on both sides	2" Red Rubber Notched on both sides
25' Roll No-Notch (Flat) Rubber	79405	79505	79605
25' Roll 1/8" Notch Rubber	79410	79510	79610
25' Roll 3/16" Notch Rubber	79415	79515	79615
25' Roll 1/4" Notch Rubber	79420	79520	79620
25' Roll 3/8" Notch Rubber	79425	79525	79625
25' Roll 1/2" Notch Rubber	79430	79530	79630

Blade Width

Description	Item No. 16"	Item No. 24"	Item No. 30"	Item No. 36"	Item No. 48"
Neoprene No-Notch (Flat) Reversible Squeegee Blade	79005	79010	79013	79015	79020
Neoprene 1/8" Notch Reversible Squeegee Blade	79025	79030	79033	79035	79040
Neoprene 3/16" Notch Reversible Squeegee Blade	79045	79050	79053	79055	79060
Neoprene 1/4" Notch Reversible Squeegee Blade	79065	79070	79073	79075	79080
Neoprene 3/8" Notch Reversible Squeegee Blade	79085	79090	79093	79095	79100
Neoprene 1/2" Notch Reversible Squeegee Blade	79105	79110	79113	79115	79120
EPDM No-Notch (Flat) Reversible Squeegee Blade	79205	79210	79213	79215	79220
EPDM 1/8" Notch Reversible Squeegee Blade	79225	79230	79233	79235	79240
EPDM 3/16" Notch Reversible Squeegee Blade	79245	79250	79253	79255	79260
EPDM 1/4" Notch Reversible Squeegee Blade	79265	79270	79273	79275	79280
EPDM 3/8" Notch Reversible Squeegee Blade	79285	79290	79293	79295	79300
EPDM 1/2" Notch Reversible Squeegee Blade	79305	79310	79313	79315	79320
Red Rubber No-Notch (Flat) Reversible Squeegee Blade	79705	79710	79713	79715	79720
Red Rubber 1/8" Notch Reversible Squeegee Blade	79725	79730	79733	79735	79740
Red Rubber 3/16" Notch Reversible Squeegee Blade	79745	79750	79753	79755	79760
Red Rubber 1/4" Notch Reversible Squeegee Blade	79765	79770	79773	79775	79780
Red Rubber 3/8" Notch Reversible Squeegee Blade	79785	79790	79793	79795	79800
Red Rubber 1/2" Notch Reversible Squeegee Blade	79805	79810	79813	79815	79820