



chemical solutions to concrete problems

FLOORING



FLOORING CUSTOMERS WITH QUALITY

As performance demands on steel-troweled industrial floor slabs have increased, Nox-Crete's powerful flooring systems deliver results. These systems are tested to significantly increase resistance to abrasion, greatly increase surface life, and reduce long term maintenance costs.

As the concrete industry evolves, Nox-Crete remains at the leading edge of the industry providing high quality and innovative products.



| PRODUCTS | PAGE |
|--|------|
| SEMI-RIGID JOINT FILLERS | |
| Clean Shave..... | 3 |
| Dynaflex JF-85 | 3 |
| CONCRETE FLOOR STRIPPER | |
| Bio-Clean Plus | 3 |
| LIQUID FLOOR HARDENERS, DYES AND POLISHES | |
| Duro-Nox | 4 |
| Duro-Nox HS | 4 |
| Duro-Nox HSC..... | 4 |
| Duro-Nox LS..... | 4 |
| Duro-Nox LSC | 4 |
| Duro-Polish | 4 |
| Duro-Polish Plus | 5 |
| Duro-Floor Classic System..... | 5 |
| Duro-Shield | 5 |
| Duro-Color..... | 5 |
| Duro-Floor Color System | 5 |
| Harbeton..... | 5 |
| SURFACE EVAPORATION REDUCER | |
| Monofilm..... | 6 |
| RESINOUS FLOORING OVERLAYMENT | |
| DauergROUT E | 6 |
| REPAIR MORTARS & GROUTS | |
| Quick-Fix | 6 |
| Quick Patch | 6 |
| APPLICATION EQUIPMENT | |
| Microfiber Applicator..... | 7 |
| Perfect Form & Concrete Sprayer | 7 |
| Perfect Power Sprayer | 7 |
| NOX-CRETE HISTORY | 8 |

GREEN ENGINEERED PRODUCTS



Since the early 1980s, Nox-Crete has been committed to developing products that are Green Engineered®. Nox-Crete products with this label are specially designed to be safer for both people and the environment. The cornerstone of our Green Engineered® concept is our research and development of water-based products. Green Engineered® products

from Nox-Crete are performance-driven and designed to the highest quality standards using safer raw materials. With Green Engineered® products, design and construction professionals can meet the expectations for project design and construction without compromise to product performance or the world we share.



DURO-NOX



DURO-FLOOR CLASSIC SYSTEM

SEMI-RIGID JOINT FILLERS

CLEAN SHAVE

Stain Blocking Film For Semi-Rigid Joint Filler Application



Water based, copolymer stain blocking film is both easy to apply and fast drying. Protects concrete from stains caused by joint filler overfill during joint filler application. Also facilitates the joint shaving process, helping to minimize chatter. Water soluble film is easily removed with water and light scrubbing once joint filler application has been completed.

DYNAFLEX JF-85

Polyurea Type, Semi-Rigid Concrete Floor Joint Filler

100% solids, polyurea-based joint filler is fast-setting and tack-free in less than 5 minutes. Protects industrial floor saw cut crack control joint edge shoulders from edge fractures. Combines high shore hardness (85A) with good elongation (500%). For use in heavy duty service applications and can be applied in cold storage facilities at temperatures down to -20 deg. F (-29 deg. C). Pigmented Neptune Grey to match the color of power troweled concrete floors.



CONCRETE FLOOR STRIPPER

BIO-CLEAN PLUS

Concentrated, biodegradable, citrus-based concrete floor stripper



BIO-CLEAN PLUS is a powerful, water-dilutable, citrus based, concrete floor stripper that deeply penetrates concrete floor surfaces to safely and effectively remove curing compound residue, tilt-up bondbreaker residue, rustication adhesive residue, carpet and tile adhesives, black tire marks, oil, grease, paint and most other construction chemical residue. BIO-CLEAN PLUS can be safely used in most auto-scrub machines and is 100% biodegradable.



LIQUID FLOOR HARDENERS, DYES & POLISHES

DURO-NOX

- Water Based

Maximum Performance, Traditional Silicate Type Liquid Floor Hardener, Sealer and Densifier

Original, high performance formulation hardens, seals, densifies and dustproofs new and existing concrete floors. Increases abrasion, impact and wear resistance. Develops a lustrous, marble-like sheen that continues to improve through regular use. The application of DURO-NOX results in the formation of calcium silicate hydrate gels that become a permanent part of the floor. Abrasion resistance is increased by up to 400% and surface hardness by up to 12%. A 20-year performance warranty is available on qualified projects. DURO-NOX is an integral component of the DURO-FLOOR CLASSIC SYSTEM.



DURO-NOX LS

- Water Based

Maximum Performance, Lithium Silicate Type Liquid Floor Hardener, Sealer and Densifier

High performance formulation hardens, seals, densifies and dustproofs new and existing concrete floors. Increases abrasion, impact and wear resistance. Does not require the costly and environmentally-damaging high pH rinse removal step necessary with application of traditional silicate type liquid floor hardeners. Develops a lustrous, marble-like sheen that continues to improve through regular use. Increases the surface abrasion resistance over 500%. A 20-year performance warranty is available on qualified projects. DURO-NOX LS is an integral component of the DURO-FLOOR CLASSIC SYSTEM.



DURO-NOX LSC

- Water Based

Standard Performance, Lithium Silicate Type Liquid Floor Hardener, Sealer and Densifier

Less reactive, lower solids formulation economically hardens, seals, densifies and dustproofs new and existing concrete floors. Increases abrasion, impact and wear resistance. Does not require the costly and environmentally-damaging high pH rinse removal step necessary with application of traditional silicate type liquid floor hardeners. Particularly well-suited for use on colored, dyed or stained concrete without causing white surface discoloration. Develops a lustrous, marble-like sheen that continues to improve through regular use. Increases the surface abrasion resistance over 300%. DURO-NOX LSC is an integral component of the DURO-FLOOR CLASSIC and DURO-FLOOR COLOR SYSTEMS.



DURO-NOX HS

- Water Based

Maximum Performance, Lithium & Potassium Blended Hybrid Silicate Type, Floor Hardener, Sealer & Dustproof

DURO-NOX HS, offers all the advantages of the original DURO-NOX, but with a next generation hybrid silicate formulation that eliminates the costly and environmentally damaging rinse removal step required with traditional sodium silicate type liquid floor hardeners. When DURO-NOX HS chemically reacts with free limes present in concrete, calcium silicate hydrate gels are formed and become a permanent part of the floor. Treated floors have increased hardness and abrasion resistance. Additionally, floors treated with DURO-NOX HS exhibit an attractive sheen that increases over time through routine maintenance and use. Increases the surface abrasion resistance over 800%. A 20-year performance warranty is available on qualified projects. DURO-NOX HS is an integral component of the DURO-FLOOR CLASSIC SYSTEM.



DURO-NOX HSC

- Water Based

Standard Performance, Lithium & Potassium, Blended Hybrid Silicate Type Liquid Floor Hardener, Sealer & Densifier

DURO-NOX HSC is a less reactive, lower solids formulation and one of the more economical ways to densify concrete floors, DURO-NOX HSC offers all the advantages of DURO-NOX, but with a hybrid silicate formulation that eliminates the costly and environmentally damaging high pH rinse removal step required with traditional sodium silicate type floor hardeners. Particularly well-suited for use on colored, dyed or stained concrete without causing white surface discoloration. Develops a lustrous, marble-like sheen that continues to improve through regular use. Increases the surface abrasion resistance over 500%. DURO-NOX HSC is an integral component of the DURO-FLOOR CLASSIC and DURO-FLOOR COLOR SYSTEMS.



DURO-POLISH

Concentrated, Synthetic Polymer Floor Polish

Fast drying, water based formulation gives an immediate ultra-high gloss finish that requires no buffing. The finish is extremely durable and is both scuff and scratch resistant. For use on concrete floors previously treated with one of the DURO-NOX silicate type liquid floor hardeners. Meets the static coefficient of friction requirements of ASTM D 2047.

LIQUID FLOOR HARDENERS, DYES & POLISHES

DURO-POLISH PLUS

Concentrated, Synthetic Polymer Floor Polish with Special Stain Blocking Additive



The same benefits of DURO-POLISH with the added advantage of stain resistance. Provides stain protection from the most common stain-causing agents found in grocery stores, restaurants, warehouses and distribution centers. For use as a final finish and integral component of the DURO-FLOOR CLASSIC SYSTEM.

DURO-FLOOR CLASSIC SYSTEM

Concrete Flooring System for Both Steel Troweled and Diamond Polished Floors



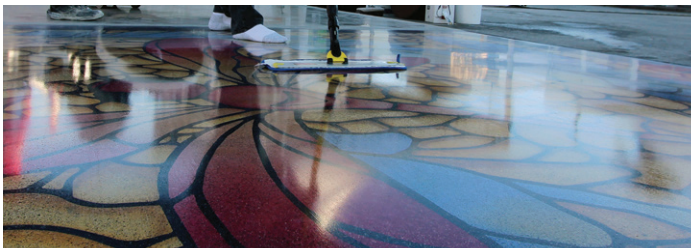
The DURO-FLOOR CLASSIC SYSTEM incorporates a highly abrasion resistant liquid floor hardener and an ultra-high gloss polish with built-in stain resistance. The two-part system combines one of either DURO-NOX, DURO-NOX LS, DURO-NOX LSC, DURO-NOX HS or DURO-NOX HSC liquid floor hardener/densifiers with DURO-POLISH PLUS gloss enhancer and stain protectant. The DURO-FLOOR CLASSIC SYSTEM beautifies, strengthens, dustproofs, increases the abrasion and impact resistance, improves stain resistance and reduces the slipperiness of both steel troweled and diamond polished concrete floors. Designed for commercial retail, office, sporting arena, convention center, institutional, warehouse and distribution center floors.

DURO-SHIELD

Concentrated, Synthetic Polymer Floor Polish with Special Stain Blocking and UV Stabilizing Additives



The same ultra-high gloss finish, slip resistance and stain protection provided by DURO-POLISH PLUS with the additional advantage of containing a UV stabilizing additive. Designed specifically to protect DURO-COLOR dye from fading due to sun exposure through unprotected windows and doors. For use as a final finish and integral component of the DURO-FLOOR COLOR SYSTEM for diamond polished concrete floors.



DURO-SHIELD

DURO-COLOR

Concentrated, Deep Penetrating Dye For Diamond Polished Concrete Floors



DURO-COLOR dye is designed specifically for use on diamond polished concrete floors where maximum color intensity and deep penetration into concrete surface pores is desired. DURO-COLOR is available in 18 vibrant colors and is designed to be diluted with acetone or other suitable solvent prior to use. Duro-Color can be custom blended on site to achieve an unlimited number of color options. Requires the use of a liquid floor hardener such as DURO-NOX LSC or DURO-NOX HSC to lock in the color. Provides excellent fade resistance when combined with DURO-SHIELD. DURO-COLOR is an integral part of the DURO-FLOOR COLOR SYSTEM.

DURO-FLOOR COLOR SYSTEM

Colored Concrete Flooring System for Diamond Polished Floors



The DURO-FLOOR COLOR SYSTEM incorporates a highly abrasion resistant liquid floor hardener, a vibrant dye and an ultra-high gloss polish with built-in stain and UV fade resistance. The three-part system combines either DURO-NOX LSC lithium silicate densifier or DURO-NOX HSC lithium and potassium blended hybrid silicate densifier, DURO-COLOR concentrated dye and DURO-SHIELD FLOOR POLISH, stain and fade protectant. Transforms plain gray colored interior concrete floors into beautiful, brightly colored, high gloss, stain and slip resistant, polished concrete floors. Designed for commercial retail, office, sporting arena, convention center and institutional floors. Beautifies, strengthens, dustproofs and increases the abrasion and impact resistance of diamond polished concrete floors.

HARBETON

Fluorosilicate-based concrete floor hardener



HARBETON is a fluorosilicate-based hardener which chemically reacts with calcium carbonate present in concrete resulting in a chemical reaction that hardens, densifies and dustproofs concrete floors. HARBETON is ideal for use in warehouses, distribution centers, auto dealerships, manufacturing plants, parking garages and bottling plants. Leaves no residual film and creates an improved surface for mechanical bonding.



DURO-FLOOR COLOR SYSTEM

SURFACE EVAPORATION REDUCERS

MONOFILM

Concentrated Moisture Evaporation Reducer



MONOFILM contains a high molecular weight alcohol that when applied to fresh concrete slabs forms a monomolecular film on the surface that effectively reduces surface bleed water evaporation up to 80% to reduce wind crusting and to minimize the formation of plastic shrinkage cracks.



MONOFILM

RESINOUS FLOORING OVERLAYMENT

DAUERGROUT E

High Performance, Epoxy/Polyurethane Copolymer, Trowel Applied, Seamless Patch & Overlay Flooring System

Extremely tough, high strength, chemical and abrasion resistant formulation. Trowel applied system can be used to patch, re-profile or overlay concrete floor surfaces. Commonly used in food preparation, health and animal care, bathrooms, locker rooms and in institutional applications. Combines several types of graded, angular shaped aggregates that, when troweled, lay down like platelets to eliminate voids and maximize surface density. Meets USDA requirements for incidental food contact.



DAUERGROUT E

REPAIR MORTARS AND GROUTS

QUICK-FIX

High Strength, fast-setting, polyurea-based, concrete floor surface repair system

QUICK-FIX is a high-performance, polyurea-based, concrete floor repair product that is 10 times stronger than concrete. Designed to quickly and permanently repair/patch floor surface defects, pin holes, divots, fastener holes, gouges, cracks and spalls. QUICK-FIX can also be mixed with silica sand, silica flour or fumed silica to repair joint nosing or deep floor surface damage. Can be tinted with Nox-Crete's Neptune Gray Color Tint Pak, mixed with Portland cement, concrete grindings, organic dyes or shake-on color pigments to achieve improved color match to existing concrete floor surfaces. QUICK-FIX can be easily applied with a steel

trowel, flat bladed squeegee, short nap roller or brush. Can be sanded, ground or diamond polished to achieve smooth transitions. Repaired surfaces can be opened back up to traffic in less than 60 minutes.

QUICK PATCH

Fiber reinforced concrete repair mortar

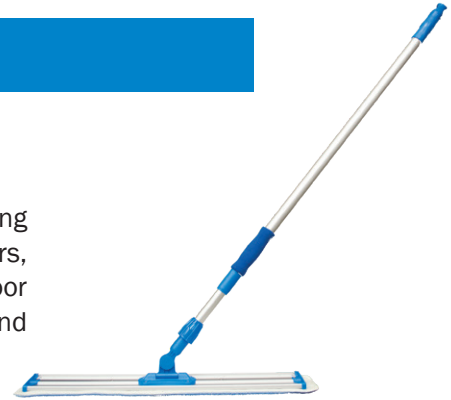
QUICK PATCH fiber reinforced, concrete repair mortar utilizes fast setting cements and is an ideal choice for repairing deep concrete floor surface spalls, divots, holes and other floor surface damage in high-traffic applications. Rapid strength gain permits resumption of traffic in as little as 2 hours and is suitable for use at temperatures below freezing.

APPLICATION EQUIPMENT

MICROFIBER APPLICATOR

Flooring Product Applicator

A heavy duty, commercial microfiber applicator, aluminum frame with telescoping poll. Used to even out spray applications of DURO-NOX liquid floor hardeners, DURO-COLOR, DURO-POLISH, DURO-POLISH PLUS and DURO-SHIELD floor polishes and protectants. Microfiber pads are available in 24 inch(61cm) and 36 inch (91cm) sizes.



PERFECT FORM & CONCRETE SPRAYER

Commercial-Grade Pressurized Sprayer

Exclusively designed for use with NOX-CRETE products, the PERFECT FORM & CONCRETE SPRAYER is perfectly designed for applying tilt-up bondbreakers, curing compounds, floor sealers, liquid floor hardener/densifiers and other construction chemicals. The success of your project often depends on applying these products correctly and the PERFECT FORM & CONCRETE SPRAYER will ensure that a successful result is achieved. Solvent resistance to most organic solvents to include low VOC and exempt solvents. The sprayer has a 3.4 gal (12.87 L) capacity and two in-line filters that eliminate spray tip clogging. Use either the air fill inlet or the hand pump to pressurize PERFECT FORM & CONCRETE SPRAYER up to 116 psi (8.0 Bar). A backpack-style carrying strap makes for easy transportation. Various models available depending upon use requirements.

PERFECT POWER SPRAYER

Battery-Driven Power Sprayer

The most advanced, battery-driven power sprayer currently available. Specifically designed for spraying NOX-CRETE curing compounds, tilt-up bondbreakers, floor sealers and liquid floor hardener/densifiers.

FEATURES:

- Powered by DeWalt® 20 Volt or 20/60 FLEXVOLT® lithium-ion batteries
- Chemically resistant, self priming gear pump with enclosed housing for maximum durability and performance
- On-board computer maintains pressure and volume for consistent application rates and automatically adjusts for viscosity variations
- Chemical-resistant gear pump with the ability to self-prime
- Automatic run-dry shut-off to prevent damage to pump
- Heavy-duty stainless spray gun and wand
- Extreme solvent resistance to most organic, exempt and low VOC solvents



FLOORING

HISTORY



CARL LINN IN THE LABORATORY



DEACTIVATOR • FORM COATING

THE CONCRETE CHALLENGE

In 1956, while working for Standard Oil Company, chemist Carl Linn observed contractors using the company's oil and grease compounds to prevent concrete from bonding to forms. Not only were the compounds difficult to work with, but the concrete was discolored and unpaintable. Forms failed after just a few pours. Concrete workers struggled with these issues for years, but Linn had an idea.

OUR CHEMICAL SOLUTIONS

Carl developed a chemically active release agent, Nox-Crete Form Coating, and a chemically active form maintenance product, Deactivator. With Nox-Crete Form Coating, contractors produced considerably better looking concrete and got longer life from their wood forms.

With Deactivator, concrete buildup was safely and easily removed from tools and equipment. And so, Nox-Crete's passion for solving concrete professionals' problems was born.

STILL INNOVATING WORLDWIDE

Today, Nox-Crete continues to manufacture chemical solutions to concrete problems. While still manufacturing the original Nox-Crete Form Coating and Deactivator, we have expanded our product line to include over 100 different products spanning six different market segments that are sold through a worldwide network of distributors and dealers.

Following Carl Linn's example, we continue to rely on concrete contractors for new product ideas. Our chemists and engineers examine field problems and develop solutions in our laboratory.

This passion for innovation is found in the quality and performance of all Nox-Crete products.

CONCRETE MARKETS WE SERVE

- Application Equipment
- Decorative
- Forming
- Bonding Agents and Cementitious
- Equipment/ Maintenance
- Precast
- Curing
- OEM
- Tilt-Up
- Flooring
- Water Repellents



chemical solutions to concrete problems

