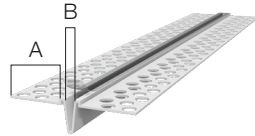
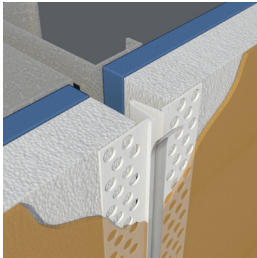


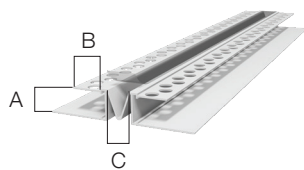
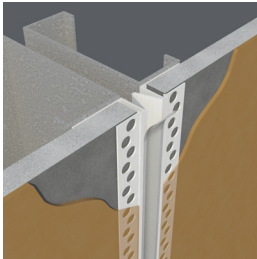
# Control Joints

Designed to relieve stress caused by expansion and contraction and control cracking in large areas of walls and ceilings. Removable tape protects expansion slot during construction. Large perforations allow matrix to easily flow through and bond to substrate. Recommended usage is for every 130-140 sq. ft. with no one side being longer than 15 ft. Caulk all intersections, butt joints, ends and corners at time of installation.



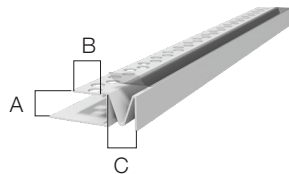
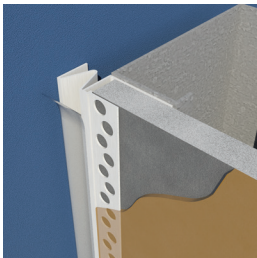
## EIFS Control Joint with Removable Tape

Product Code	Finish Thickness	Insulation Thickness	(A) Perforated Flanges	(B) "V" Reveal	Pieces per Box
CJV-16E	1/16"	All	1-1/8"	3/16"	60



## DEFS Control Joint with Removable Tape

Product Code	Finish Thickness	(A) Board Thickness	(B) Perforated Flanges	(C) "V" Reveal	Pieces per Box
DCJ-50V	1/16"	1/2"	5/8"	3/16"	30
DCJ-58V	1/16"	5/8"	5/8"	3/16"	30



## DEFS "F" Control Joint with Removable Tape

Product Code	Finish Thickness	(A) Board Thickness	(B) Perforated Flanges	(C) "V" Reveal	Pieces per Box
FDCJ-50V	1/16"	1/2"	5/8"	3/16"	30
FDCJ-58V	1/16"	5/8"	5/8"	3/16"	30