

Wabo®Flash

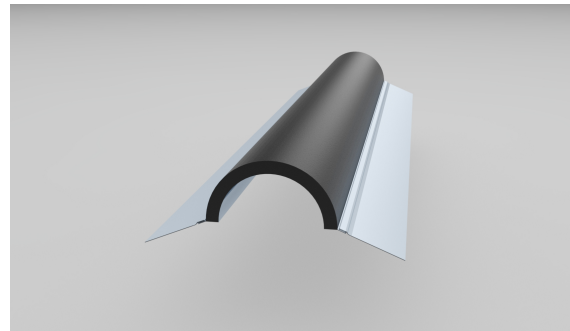
Flexible Roof and Wall Bellows Expansion System

Features	Benefits
• Flexibility	Accommodates multi-directional movement
• Versatility	Compatible with most roofing systems
• Efficiency	Easy to install-time, proven traditional design
• Factory transitions	Accommodates complicated field transitions.

DESCRIPTION:

Wabo®Flash is a cost-effective expansion control system that provides multi-directional movement capabilities and weather proofing for exterior walls and roofs. The system's flexible rubber bellows profile is integrally attached to metal flanges that are capable of following complex directional changes in a wide variety of applications.

Factory prefabricated transitions are available where applicable. Each system can be utilized as a primary protection barrier or as a secondary system behind or below a variety of construction materials.



RECOMMENDED FOR:

- Expansion joint systems for projects in:
 - Health-care
 - Transportation
 - Recreation
 - Retail
 - Commercial
 - Educational
 - Other
- Exterior, horizontal or vertical expansion control systems on exterior wall and roof structures.

PACKAGING/COVERAGE:

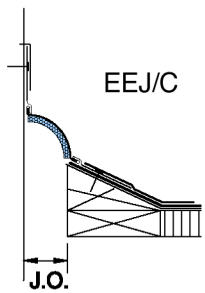
- Bellow profiles and shipped lengths are governed by metal flange configuration. All profiles are shipped in manufacturer's standard carton. Cut bellows to length on jobsite where required.
- Model EEJ (1"-4") shipped in 50 ft. coils
- Model EEJ (6" – 24") shipped in 10 ft. lengths.
- Factory fabricated directional changes (transitions) or system terminations are shipped in manufacturer's standard carton.

TECHNICAL DATA:

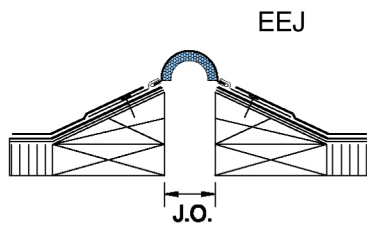
Design Information

Wabo®Flash is designed to solve building movement and closure problems no matter how complicated the roofing system is. Wabo®Flash Models EEJ/ECF/EWC/EVS is a horizontal expansion control system designed as a waterproof closure between building components. The system is a combination of black 60 mil EPDM elastomeric bellows laminated to a closed cell foam mechanically attached to 26 gauge galvanized steel flanges.

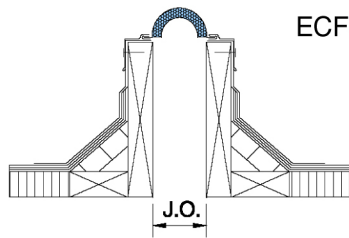
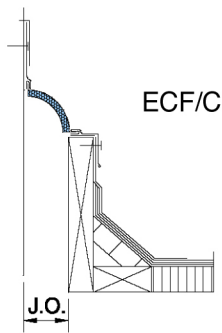
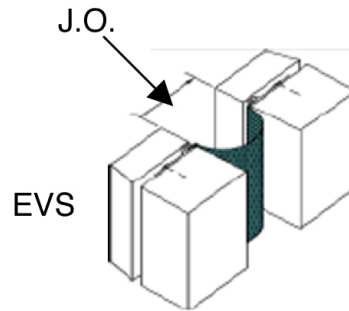
WALL-TO-ROOF



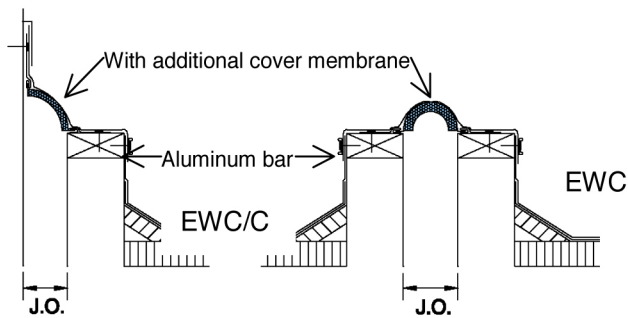
ROOF-TO-ROOF



WALL-TO-WALL



Note: see product sales drawings for additional details





Movement Table

EEJ MODEL # (ROOF)	ECF MODEL # (ROOF)	EWC MODEL # (ROOF)	EVS MODEL # (WALL)	JT. OPENING "A" (@mid)		TOTAL MOVEMENT	
				inches	mm	inches	mm
EEJ-100/100C	ECF-100/100C	EWC-100/100C	EVS-100/100C	1.0	25	1.0	25
EEJ-200/200C	ECF-200/200C	EWC-200/200C	EVS-200/200C	2.0	51	2.0	51
EEJ-300/300C	ECF-300/300C	EWC-300/300C	EVS-300/300C	3.0	76	3.0	76
EEJ-400/400C	ECF-400/400C	EWC-400/400C	EVS-400/400C	4.0	102	4.0	102
EEJ-500/500C	ECF-500/500C	EWC-500/500C	EVS-500/500C	5.0	127	5.0	127
EEJ-600/600C	ECF-600/600C	EWC-600/600C	EVS-600/600C	6.0	152	6.0	152
EEJ-700/700C	ECF-700/700C	EWC-700/700C	EVS-700/700C	7.0	178	7.0	178
EEJ-800/800C	ECF-800/800C	EWC-800/800C	EVS-800/800C	8.0	203	8.0	203
EEJ-1000/1000C	ECF-1000/1000C	EWC-1000/1000C	EVS-1000/1000C	10.0	254	10.0	254
EEJ-1200/1200C	ECF-1200/1200C	EWC-1200/1200C	EVS-1200/1200C	12.0	305	12.0	305
EEJ-1600/1600C	ECF-1600/1600C	EWC-1600/1600C	EVS-1600/1600C	16.0	406	16.0	406
EEJ-1800/1800C	ECF-1800/1800C	EWC-1800/1800C	EVS-1800/1800C	18.0	457	18.0	457
EEJ-2000/2000C	ECF-2000/2000C	EWC-2000/2000C	EVS-2000/2000C	20.0	508	20.0	508
EEJ-2400/2400C	ECF-2400/2400C	EWC-2400/2400C	EVS-2400/2400C	24.0	610	24.0	610

PHYSICAL PROPERTIES:

Bellow Profile: Flexible Membrane Cover-60 mil (1.5 mm) EPDM sheet (black) Support Foam-closed cell foam, k factor 0.25 BTU·in/(hr·ft²·oF) at ambient (0.036 W/m·oC). Foam thickness varies depending on bellows width.

Flange Metal:

Standard 4" Galvanized Steel 26g. (0.56 mm)

Accessories:

Provide necessary and related splice kit related splice kits required for complete installation



APPLICATION:

INSTALLATION SUMMARY:

- Installation must be preformed in gap openings with sound construction.
- Gap openings must have parallel dimensionally consistent side walls.
- Bellows joint systems shall be installed in strict accordance with the manufacturer's typical details and instructions along with the advise of their qualified representative.
- Protect installed systems and transitions from damage during construction.
- Roof and wall construction and materials shall be designed to allow for proper installation of system and its components. Construct roof curbs or cants in accordance with manufacturer's requirements.

RELATED DOCUMENTS:

- Material Safety Data Sheets
- Wabo@Flash Specification
- Wabo@Flash Sales Drawings
- Wabo@Flash Installation Procedure

LIMITED WARRANTY:

Watson Bowman Acme Corp. warrants that this product conforms to its current applicable specifications. WATSON BOWMAN ACME CORP. MAKES NO OTHER WARRANTY, EXPRESS OR IMPLIED, INCLUDING ANY WARRANTY OF MERCHANTABILITY OR WARRANTY OF FITNESS FOR A PARTICULAR PURPOSE. The sole and exclusive remedy of Purchaser for any claim concerning this product, including, but not limited to, claims alleging breach of warranty, negligence, strict liability or otherwise, is the replacement of product or refund of the purchase price, at the sole option of Watson Bowman Acme Corp. Any claims concerning this product shall be submitted in writing within one year of the delivery date of this product to Purchaser and any claims not presented within that period are waived by Purchaser. IN NO EVENT SHALL WATSON BOWMAN ACME CORP. BE LIABLE FOR ANY SPECIAL, INCIDENTAL, CONSEQUENTIAL (INCLUDES LOSS OF PROFITS) OR PUNITIVE DAMAGES. Other warranties may be available when the product is installed by a factory trained installer. Contact your local Watson Bowman Acme representative for details. The data expressed herein is true and accurate to the best of our knowledge at the time published; it is, however, subject to change without notice.

FOR BEST RESULTS:

- Do not install if the joint's anticipated movement will exceed the system's movement range.
- Deliver product in each manufacturer's original, intact, labeled containers. Protect the work area with appropriate plastic sheeting.
- Do not allow any of the components to freeze prior to installation. Store all components out of direct sunlight in a clean, dry location between 50°F (10°C) and 90°F (32°C). Store off the ground and protect from weather and construction activities.
- Periodically inspect the installed material and repair localized areas as needed. Inspect for loose components and/or hardware, repair as necessary. Consult a Watson Bowman Acme representative for additional information.
- Make certain the most current version of the product data sheet is being used. Please consult the website (www.watsonbowmanacme.com) or contact a customer service representative.
- Proper application is the responsibility of the user. Field visits by Watson Bowman Acme personnel are for the purpose of making technical recommendations only and not for supervising or providing quality control on the jobsite.

WaboFlash_0321