

## Control Joint with Removable Tape

Designed to relieve stress caused by expansion and contraction

Control joint used for EIFS / DEFS applications to relieve stress caused by expansion and contraction and control cracking in large areas of walls and ceilings. The removable tape creates a mask over the expansion slot during installation for a clean finish. Large perforations allow the base coat mixture to easily flow through and bond to the substrate. Recommended usage is for every 130-140 sq. ft. with no one side being longer than 15ft. Caulk all intersections, butt joints, ends, and corners at the time of installation.

**Applications: EIFS / DEFS**

### Product Data & Ordering Information:

Product Code	Finish Thickness	Insulation Thickness	Perforated Flanges	Reveal Width	Reveal Depth	PCS/Box
CJV-16E	1/16"	All	1-1/8"	3/16"	7/16"	60

### ASTM & Code Standards

#### Product Specifications

- ASTM E2568 - Standard Specification for PB Exterior Insulation and Finish Systems
- ASTM D1784 - Standard Specification for Rigid Poly Vinyl Chloride (PVC) Compounds and Chlorinated Poly Vinyl Chloride (CPVC) Compounds
- ASTM D4216 (Cell class 13244C) - Standard Specification for Rigid Poly Vinyl Chloride (PVC) Compounds and Related PVC and Chlorinated Poly Vinyl Chloride (CPVC) Building Products Compounds
- ASTM D638 - Standard Test Methods for Tensile Properties of Plastics
- ASTM D790 - Standard Test Methods for Flexural Properties of Unreinforced and Reinforced Plastics and Electrical Insulating Materials
- ASTM D256 - Standard Test Methods for Determining the Izod Pedulum Impact Resistance of Plastics
- ASTM D648 - Standard Test Methods for Deflection Temperature of Plastics Under Flexural Load in the Edgewise Position
- ASTM D696 - Standard Test Methods for Coefficient of Linear Thermal Expansion of Plastics Between -30 Degrees Celsius and 30 Degrees Celsius Vitreous Silica Dilatometer Installation Standards
- SDS & Product Certification Information is available at [www.clarkdietrich.com/SupportDocs](http://www.clarkdietrich.com/SupportDocs)

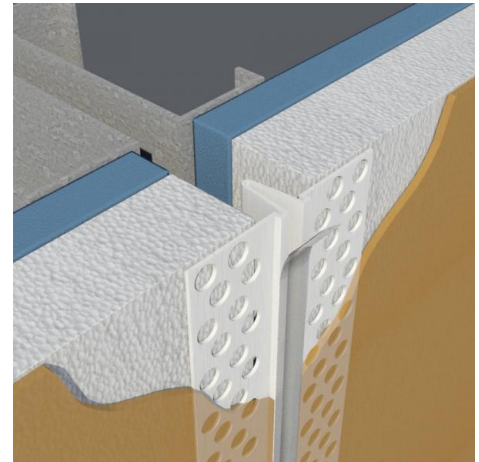
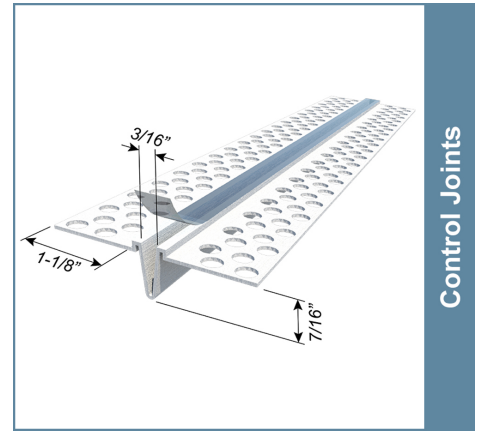
#### Installation Standards

- ASTM E2110 - Standard Terminology for Exterior Insulation & Finish Systems (EIFS)
- ASTM E2486 - Standard Test Methods for Impact Resistance of Class PB and PI Exterior Insulation and Finish Systems (EIFS)
- ASTM E2511 - Standard Guide for Detailing of EIFS-Clad Barrier and Drainage Wall Assemblies
- ASTM E2273 - Standard Method for Determining the Drainage Efficiency of Exterior Insulation and Finish Systems (EIFS) Clad Wall Assemblies

#### Storage

All stored materials shall be kept dry. Materials shall be stacked off the ground, supported on a level platform, and protected from the weather.

### 07.24.00 (Exterior Insulation & Finish Systems)



#### Project Information

Name:  
Address:

#### Contractor Information

Name:  
Contact:  
Phone:  
Fax:

#### Architect Information

Name:  
Contact:  
Phone:  
Fax: