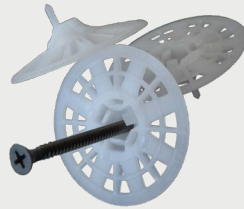
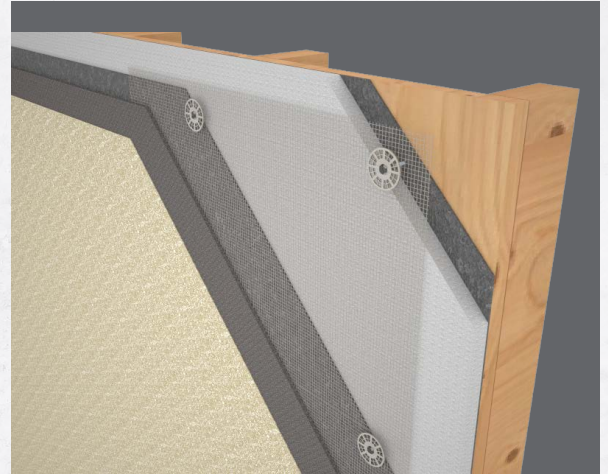


**PBLP2
PRONG**



**PBLP2
PRE-ASSEMBLED**



WHY PRE-ASSEMBLE WHEN YOU CAN PRE-SPOT?

PLASTI-GRIP® PBLP2 WASHER

2" dia. washer with Grip-Deck® screws attaches EPS or XPS foam in polymer based (PB) EIFS assemblies.

PLASTI-GRIP® PBLP2 PRONG WASHER

Labor-saving prong allows on-the-wall screw assembly.

THERMAL BREAK DESIGN

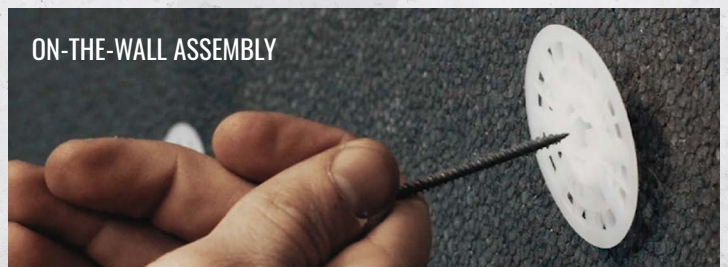
Screw head is recessed from basecoat.

PRODUCT FEATURES

- EIFS system manufacturer approved.
- 2" diameter washer with keyholes for basecoat bonding.
- No hand assembly required = labor and cost savings.
- Prong enables on-the-wall screw assembly.
- Recommended for use with Grip-Deck® screws.
- Available with self-drilling and Hi-Lo thread screws.
- Made in USA
- Patented and/or patent pending.



ON-THE-WALL ASSEMBLY



SINCE 1823

ALTENLOH, BRINCK & CO. US, INC.
ALTENLOH, BRINCK & CO. - GROUP

TRUFast
WALLS

130 Graham St. SW, Grand Rapids, MI 49503 • 616-454-3100 • wallssales@trufast.com • www.trufastwalls.com

Bulletin No. TFW-2020