



DECORATIVE CONCRETE BY
EUCLID CHEMICAL

LEVEL TOP

DECORATIVE SELF-LEVELING OVERLAYMENTS



APPLICATIONS

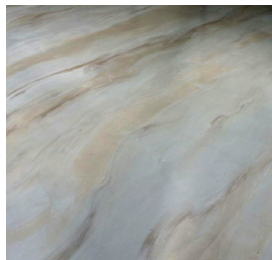
- Retail/commercial flooring
- Warehouse aisles
- Office and medical facilities
- School/Institution floors
- Restaurants
- Hotels
- Malls
- Arcades

FEATURES AND BENEFITS

- Interior/exterior use
- Fluid consistency for ease in application
- Pourable and pumpable
- Self-leveling
- Can be integrally colored
- Can be dyed
- Can be polished in 24 hours
- Can be coated in 24 hours
- Compatible with liquid densifiers
- Excellent bond strength
- High early strength for fast turnaround
- Acceptable as an underlayment

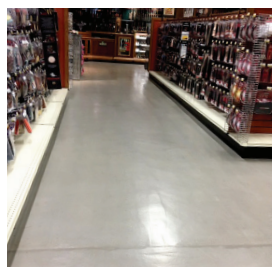
SS000 Level Top © 2018 The Euclid Chemical Company

The Level Top series of self leveling resurfacing toppings are easy-to-use, single component, and designed for use on new or worn concrete substrates. Level Top is cement based and polymer modified, and when mixed with water has a fluid consistency and self-leveling properties. As an overlayment, the high-early strength makes it perfect for rapid turnaround flooring projects. Made in three formulas, there is an option for all your interior flooring needs.



Level Top Stain

Level Top Stain can be integrally colored or stained within hours of placement. Specifically engineered to accept either Stain-Crete Acid Stain or Vibra Stain dyes, this surface may be sealed with solvent or water based acrylics, epoxies, polyaspartics, or urethanes. The base color cures to a light shade making your stain colors pop with a vibrancy not found in concrete.



Level Top Polish

Level Top Polish is uniquely engineered as a high strength overlay that may be polished 24 hours after placing. It may be integrally colored or tinted with Vibra Stain dye. Stronger than regular concrete, Level Top Polish gives a brilliant, reflective shine when polished. Want that clean, modern, and lustrous look? Level Top Polish is the answer.



Level Top PC-Agg

Level Top PC-Agg takes polishable overlays to the next level, with a graded natural aggregate, designed for use on either new or worn concrete substrates. It provides excellent adhesion, toughness, and long-term durability. PC-AGG can be ground and polished to achieve the appearance of polished concrete. High-early strength allows for polishing 24 hours after placement. In addition to flooring, it's perfect for polished countertops, tables, and other poured-in-place or precast applications.