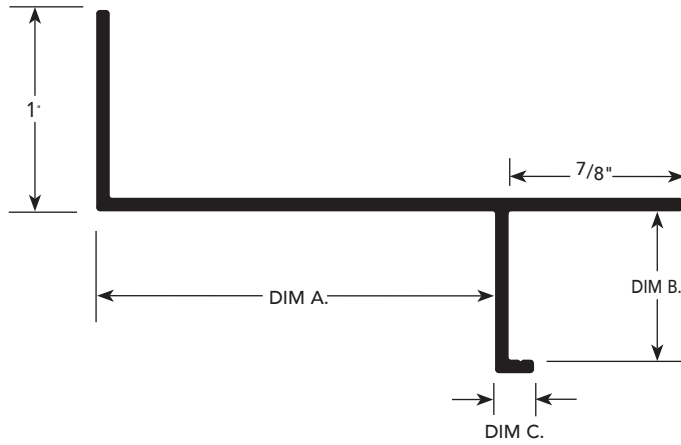


SOFFIT MOLDING



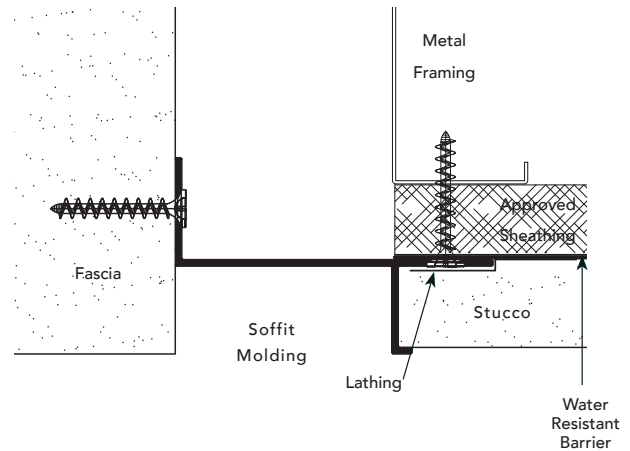
INSTALLATION DETAIL / Cross Section

USAGE

Fry Reglet Soffit Molding provides a reveal joint and screed point in stucco soffits. With vents, it provides a venting capability for soffits.

GUIDE SPECIFICATION

Where indicated on drawings, Fry Reglet Soffit Molding, as manufactured by Fry Reglet Corporation, shall be installed. Aluminum shall be extruded alloy 6063 T5, with chemical conversion coating, clear anodized or other specified finish. Refer to finish section.



SIZES

DIM. B THICKNESS	DIM. A REVEAL WIDTH	DIM. C LEG WIDTH	NUMBER	
			NON-VENTED	VENTED
1/2"	3"	1/2"	WPM-50-300	WMP-50-V-300
3/4"	2"	3/16"	1680	1680-V
3/4"	3"	3/16"	WPM-75-300	WPM-75-V-300
3/4"	4"	3/16"	WPM-75-400	WPM-75-V-400