

GAUGE RAKES - WIRE & SLED-STYLES

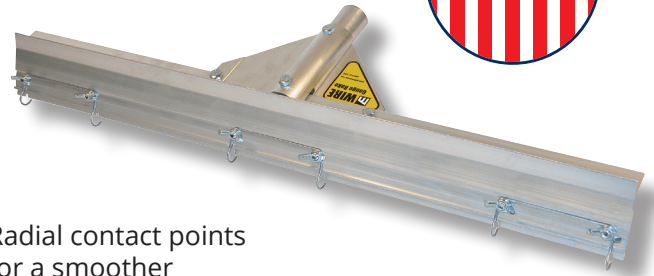
Wire Gauge Rakes



58624



Radial contact points for a smoother push / pull action



58609



Applies self-leveling floor coatings and lower viscosity materials. Far superior to pin-type gauge rakes on the market. The strong spring-steel wires are formed in a "radial" or loop fashion, eliminating chatter and vibration common with pin-type gauge rakes. Radial contact points will maintain even at varying handle angles and lengths. The adjustable aluminum gate or bar can be set to any desired thickness from 0" to 5/8". Replacement wires are available.

Description	Frame Width		
	Item No. 14"	Item No. 24"	Item No. 36"
Wire Gauge Rake with Threaded Handle Adapter	58714	58609	58734
Wire Gauge Rake with 66" Powder-Coated Aluminum Handle	-	58624	58736
Wire Gauge Rake with 82" Powder-Coated Aluminum Handle	-	58824	58738

Description	Item No.		
Replacement Wire Set (Set of 3 Wires)	68611	68611	-
Replacement Wire Set (Set of 4 Wires for 36" Width)	68616	-	68616

Sled-Style Gauge Rakes

These self-adjusting gauge rakes have been used by contractors for many years. Although not as precise as our other gauge rakes, they are value priced and will allow you to achieve a reasonably level depth when installing cementitious materials. They also allow you to easily move over rough surfaces. Styles and colors may vary, but the "sled-style" self-adjusting feature of this gauge rake will be a standard characteristic in this category. Our handle adapter is threaded to provide a secure connection.



Item No.	Description
58420	24" Sled-Style Gauge Rake
58425	36" Sled-Style Gauge Rake
SA30034	Replacement Sleds - Set of 2