



SINAK
SUSTAINABLE BUILDING SOLUTIONS



LITHIUMCURE 2000™ CONCRETE CURING AGENT

SINAK LithiumCure 2000™ is a ready-to-use, zero VOC Curing Agent, Water-Cure Equivalent Type, that outperforms all traditional curing methods. LithiumCure 2000™ is proven to prevent cure-related cracking and crazing while eliminating slab curling. LithiumCure 2000™ is non-toxic, contains no solvents, and is listed as UL® GREENGUARD Gold Certified and super compliant with SCAQMD—making it the most environmentally-friendly curing agent on the market.

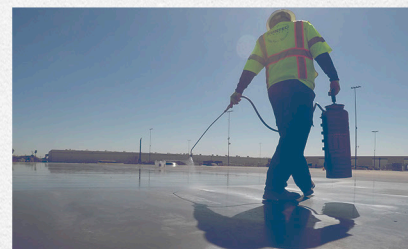


FEATURES & BENEFITS

- BETTER THAN WATER CURE
- EXCEEDS ASTM C-309 & ASTM C-1315
- ELIMINATES SLAB CURL
- COMPATIBLE WITH ALL DENSIFIERS AND POLISH SYSTEMS
- UL® GREENGUARD GOLD CERTIFIED

LithiumCure 2000™ is designed for use on hard steel troweled finished concrete and is compatible with all known densifiers, polishes, and resins. LithiumCure 2000™ chemically replicates 28-day water cure results and assures that the specified design strengths will be achieved along with improved durability and reduced permeability. LithiumCure 2000™ does not interfere with tilt panel bond breakers or the bonding of joint sealants, patching, surface coatings, paints, lane markers, or cement wash treatments.

SINAK Corporation's line of curing agents are the first of their kind to surpass both ASTM C-309 and ASTM C-1315 standards for performance and moisture retention. LithiumCure 2000™ is available as a Type 1, Class A cure. LithiumCure 2000™ is designed to replace all other water cure and membrane cure methods for rapid access to the slab and accelerated construction schedules.



WHERE TO USE LITHIUMCURE 2000™

- MEDICAL FACILITIES
 - COMMERCIAL
 - SCHOOLS
 - WAREHOUSE/DISTRIBUTION
 - STORAGE FACILITIES
- TILT UP
 - DATA STORAGE
 - RESTAURANTS
 - GOVERNMENT
 - BIG BOX

LITHIUMCURE 2000™

CONCRETE CURING AGENT

SINAK LithiumCure 2000™ is a ready to use, zero VOC Curing Agent, Water-Cure Equivalent Type, that outperforms all traditional curing methods. LithiumCure 2000™ is proven to prevent cure related cracking and crazing while eliminating slab curling. LithiumCure 2000™ is non-toxic, contains no solvents, and is listed as UL® GREENGUARD Gold Certified and super compliant with SCAQMD.

FEATURES & BENEFITS

- Zero-VOC's
- UL 2818 Gold - GREENGUARD® Certified
- Listed as Super Compliant by the South Coast Air Quality Management District (SCAQMD)
- Exceeds CA Standard Method v1.2 2017
- Meets the requirements to contribute for LEED credits in the following areas: EQ Credit 1.0, 4.1 and 4.3, EQ Credit 10 3.1, MR Credit 5.1 and 5.2

TESTING

- **ASTM C-39** (Compressive Strength) -Meets or exceeds 28-day water cure
- **ASTM C-309/C-1315: TYPE 1&2, CLASS A** (Moisture Retention) Exceeds water retention of less than 0.40 kg/m²
- **AASHTO T 277-93/ASTM C-1202-94** (Rapid Chloride Permeability) - Meets or exceeds 28-day water cure
- **BS 1881 Part 5** (Initial Surface Absorption ml/m²/sec) -Meets or exceeds 28-day water cure

*Independent laboratory reports are available upon request.

INSTALLATION

Installation should be continuous. LithiumCure 2000™ application should begin after the surface is firm enough to tolerate foot traffic or immediately after the early entry saw cutting. Apply a small test area to confirm penetration. If rain should occur at any time during this process, see 'Interrupted Installation' at the end of this section.

1. Protect objects and areas not to be treated from spillage or overspray.
2. Apply LithiumCure 2000™ in one (1) coat, uniformly wetting the surface with an airless or tank-type sprayer.
3. Pay special attention to apply material in joints, saw cuts, and on slab edges. Treatment of these areas will significantly minimize slab curl.
4. Drying time will vary from 10 to 30 minutes depending on temperature and environment. **NOTE:** "Dry" means dry to the touch.
5. Clean all equipment with warm soapy water.

INTERRUPTED INSTALLATION

If the application should be interrupted by rain, mark the place of interruption and continue the application as soon as weather permits. If the delay exceeds 4 hours contact SINAK Corporation immediately.

HOT WEATHER INSTALLATION

In hot (above 100°F or 38°C), dry and/or windy conditions apply LithiumCure 2000™ shortly after loss (evaporation) of surface water.

COLD WEATHER INSTALLATION

DO NOT apply below 34°F (1°C). Allow ample time between coats for drying. Contact SINAK Corporation for additional information.

PRECAUTIONS

Do not allow LithiumCure 2000™ to come into contact with any glass, metal, or painted surfaces. LithiumCure 2000™ left to dry on the surface may result in streaking, whitening, or staining. Immediately wipe affected surfaces with a clean water-saturated cloth, then wipe dry with a second clean cloth. For questions regarding LithiumCure 2000™ contact SINAK Corporation.

COVERAGE RATES (SUBJECT TO SURFACE FINISH)

One-coat coverage rate is 400-450 sq ft per gallon (10-11 sq m per liter).

STORAGE & HANDLING

LithiumCure 2000™ has an indefinite shelf life when stored in a cool dry area out of direct sunlight. Must be kept in tightly secured containers to prevent evaporation and contamination. LithiumCure 2000™ MUST be protected from freezing. Product that has frozen will not function as intended and should be discarded.

AVAILABILITY

LithiumCure 2000™ is available in 5-gallon (18.9-liter) pails, 55-gallon (208.2-liter) drums and 275-gallon (1041-liter) totes from selected distributors.

TECHNICAL ASSISTANCE

Technical assistance is available from the manufacturer.