

## Air/Water Barriers and Flashings

Designing and specifying the proper air and water barriers can be a challenge. Master Wall® manufactures a variety of continuous barriers to meet the needs of all types of commercial and residential projects and applications. Integrating continuous barriers eliminates problematic rips and tears that are common with traditional paper or wrap-type barriers. Master Wall® manufactures Rollershield, Trowelshield and WeatherStop secondary water barriers for use with Master Wall® assemblies and other exterior systems. All are 100% acrylic formulations for long life.



## Base Coats and Adhesives

Master Wall® Base Coats are formulated for use with our Master Wall® EIFS, Stucco and Direct Application Systems. They may also be used as an insulation adhesive for certain approved substrates.



## Meshes, Insulation, and Modifiers

Master Wall® reinforcing mesh provides tensile and impact resistance for Master Wall® systems. Available with Medium Impact Resistance using Standard Mesh, we offer a variety of impact-resistance ratings and mesh weights. Master Wall® Aggre-flex Mesh is a specially woven, glass fiber mesh with AR Coating (Alkali Resistive).



## Architectural Coatings and Primers

Architectural coatings are available for new construction or renovation projects. Whether the desire is to rejuvenate the face of an aged finish or a bold look on new construction, Master Wall® has the products you need for the desired look. Roller-flex architectural coating is used for color changes, trims and bands. Roller-flex is perfectly compatible with Master Wall® finishes. Elasto-flex is our elastomeric coating. It dries to a flat finish and bridges minor hairline cracks in stucco or other approved substrates. Primecoat primer is used to equalize finish absorption and provide a color background under Stone Finishes, Master Wall® Base Coats and Stuccos.



## Cemplaster Fiberstucco

Master Wall Inc.® Cemplaster Fiberstucco is the industry's first comprehensive warranted stucco. With warranties available up to 20 years, Cemplaster Fiberstucco offers architects the advantage of adding improved performance components such as Rollershield Air/Water Barrier, Continuous Insulation, Rainscreen options, Stucco Ad-Liquid stucco modifiers, leveling base coats (including waterproof) and elastomeric finishes. Master Wall® Cemplaster Fiberstucco is a fibered Portland cement-based bagged stucco with exceptional workability, open working time, water retention, early strength, shrinkage resistance and long-term durability.



# Superior Finishes

Superior Finishes are Master Wall Inc.'s® textured finish line. Available in a variety of colors and textures, it completes the look of your building. In addition to many standard colors, we also custom color match. Superior Finishes may be applied over Master Wall® Base Coats or prepared substrates including brick, masonry, concrete and stucco. Superior Finishes work great for interior applications as well. Superior Finishes are available in five-gallon (19L) pails and are typically troweled onto the wall surface with a stainless steel trowel.



**R-Coarse**



**Perfect Swirl 2.0**



**Medium Sand 1.5**



**Fine Sand 1.0**



**Versatex 0.5**



**Aggreline**



**ReCote**



**Plasterflex**



**Travertine**



**Savannah**



**MetalTex**



**Metallic Cote**



**Stone Finish**



**Lumia**

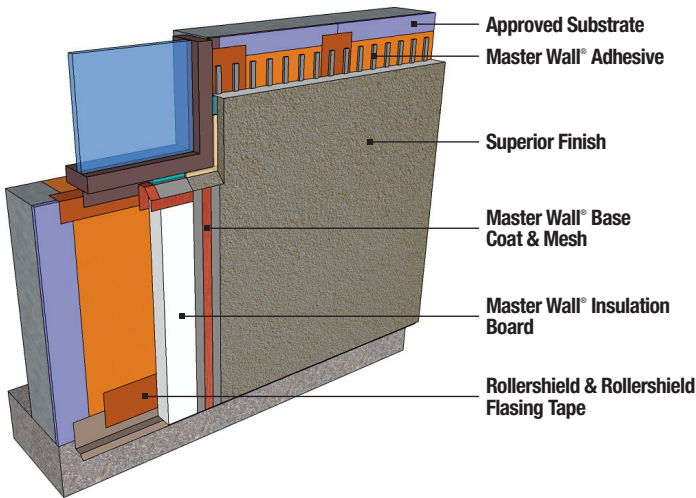


**Wood Grain**



**Brick**

# Division 07 Assemblies



## Rollershield Drainage CIFS® Class PB Drainage Exterior Insulation and Finish System

Master Wall Inc.® Rollershield Drainage Class PB Drainage Exterior Insulation and Finish System is a high performance commercial wall cladding. It uses a roller-applied air and water barrier that can be used as a flashing-type material with excellent water holdout. Vertical adhesive channels drain away any incidental water entering the system. This highly adaptable cladding is suitable for both new and retrofit construction.

### Features & Benefits

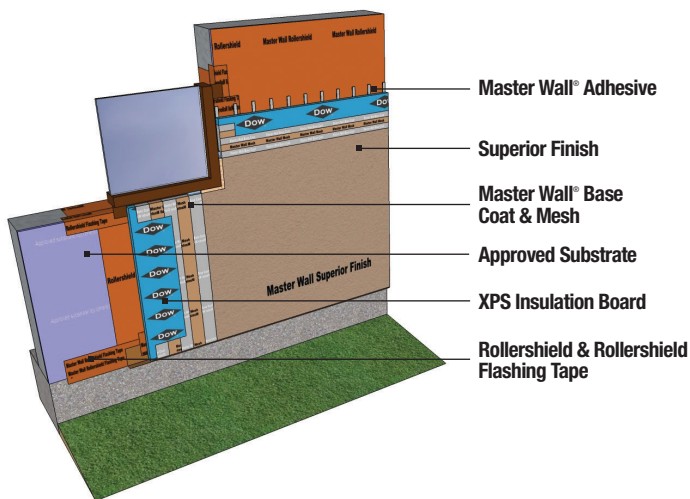
99% Drainage Efficiency  
High Insulating Value (R-4 per inch)  
CFC & HCFC Free Insulation Board,  
Recyclable  
Medium Impact Resistance is Standard

### System Use

Commercial  
Residential

### Attachment Method

Adhesive



## Rollershield Drainage CIFS® XPS Class PB Drainage Exterior Insulation and Finish System

Master Wall Inc.® Rollershield Drainage XPS is a high performing continuous insulation system that features our fluid applied air and water barrier and flashing with excellent water holdout. Vertical adhesive channels adhere the XPS continuous insulation board to the Rollershield and helps to drain away incidental water. The insulation is fully reinforced and finished with our Superior Finish or any of our specialty finishes.

### Features & Benefits

99% Drainage Efficiency  
High Insulating Value (R-5 per inch)  
CFC & HCFC Free Insulation Board,  
Recyclable  
Medium Impact Resistance is Standard

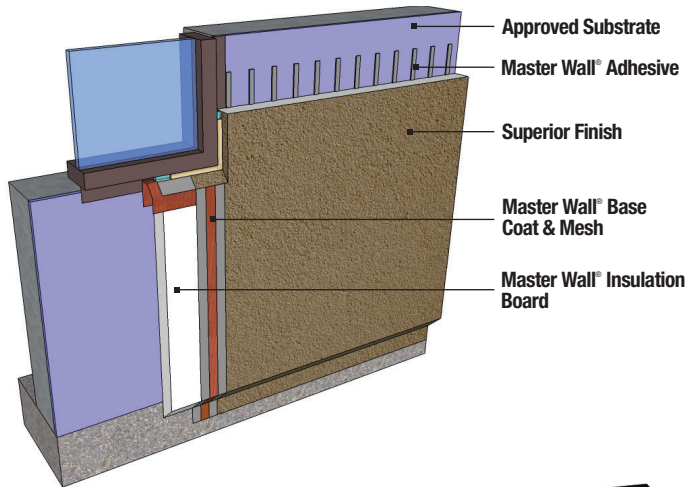
### System Use

Commercial  
Residential

### Attachment Method

Adhesive

# Division 07 Assemblies



## Aggre-flex System Class PB Exterior Insulation and Finish System

Master Wall Inc.® Aggre-flex System is a polymer-based (Class PB) Exterior Insulation and Finish System (EIFS) that blankets commercial projects with a layer of protective insulation reducing thermal losses at framing members and better insulating the entire building. The Aggre-flex System offers many options from its weather-resistant monolithic exterior to design flexibility and ease of design. It has the visual appeal that architects and owners look for without the weight or expense of traditional materials.

### Features & Benefits

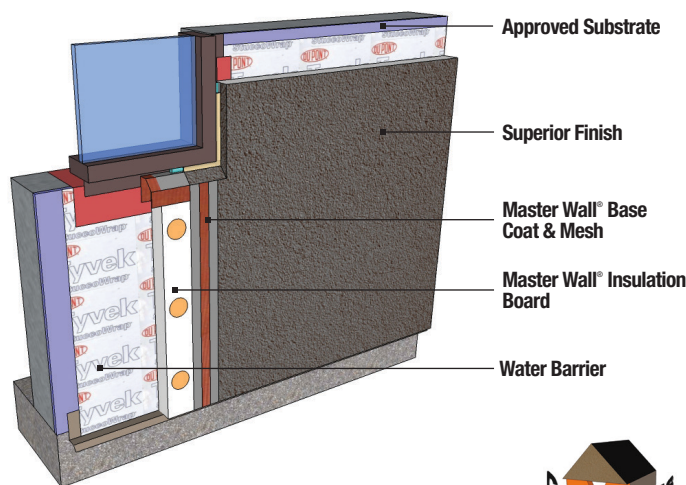
High Insulating Value (R-4 per inch)  
Design Flexibility  
Medium Impact Resistance is standard

### System Use

Commercial

### Attachment Method

Mechanical  
Adhesive



## Aggre-flex Drainage System Class PB Drainage Exterior Insulation and Finish System

Master Wall Inc.® Aggre-flex Drainage System is a mechanically attached polymer-based (Class PB Drainage) Exterior Insulation and Finish System (EIFS). The system is applied over an approved secondary water barrier that helps protect the building from incidental water intrusion while insulating the entire building in a blanket of protective insulation. Aggre-flex Drainage may be installed with flat insulation board, Master Wall® wavy insulation board or a drainage spacer.

### Features & Benefits

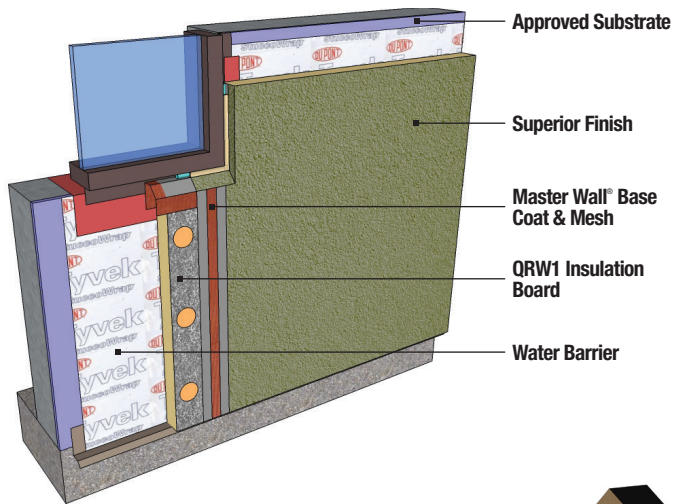
97% Drainage Efficiency  
High Insulating Value (R-4 per inch)  
Medium Impact Resistance is standard

### System Use

Commercial  
Residential

### Attachment Method

Mechanical



## QRW1 Drainage EIFS

### Class PI Drainage Exterior Insulation and Finish System

Master Wall Inc.® QRW1 system is a durable drainage system made for residential and light commercial construction. It's large insulation boards install easily and quickly over an approved water barrier. QRW1 may also use optional vent spacers or drainage mats for improved drainage.

#### Features & Benefits

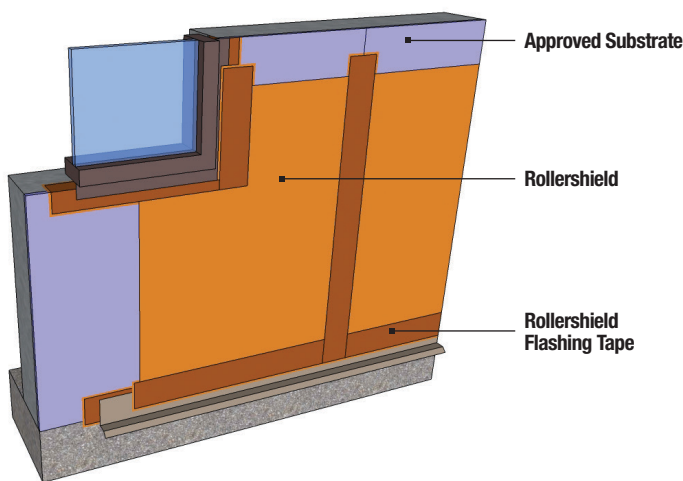
98% Drainage Efficiency  
 High Insulating Value (R-5 per inch)  
 Easy Application

#### System Use

Commercial  
 Residential

#### Attachment Method

Mechanical



## SuperiorShield AMB System

### Liquid Applied Air and Water Barrier

The SuperiorShield fluid-applied air and moisture barrier system can be installed under all claddings which require a secondary air and moisture barrier including brick, stucco, stone, siding, and Master Wall EIFS. The system consists of the following components:

- Rollershield RS or TG
- Rollershield Flashing Tape
- SuperiorFlash Liquid Flashing

Rollershield is applied with a foam roller or spray equipment to 10 mils dry thickness and forms a continuous water barrier. Sheathing board joints and transitions are reinforced with Rollershield Flashing Tape.

#### System Use

Commercial  
 Residential