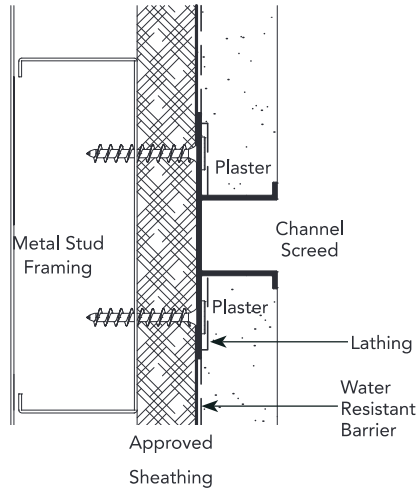
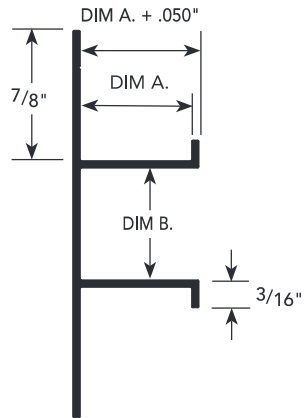


PA.1

PRODUCT DETAIL

INSTALLATION DETAIL / Cross Section

CHANNEL SCREED
/CONTROL JOINT



USAGE

Fry Reglet Channel Screed is a traditional molding that gives architectural accents to stucco walls and ceilings, available in a wide selection of reveal dimensions. Provides functional performance by establishing the proper thickness of stucco and plaster. Can be fabricated into custom intersections to meet a variety of job conditions and curved to a wide range of custom radius requirements. Used in soffits, channel screeds can be vented to provide soffit ventilation.

NOTE: Qualifies for use as a control joint for stucco and plaster applications when installed in accordance with ASTM C1063.

GUIDE SPECIFICATION

Where indicated on drawings, Fry Reglet Channel Screed, as manufactured by Fry Reglet Corporation, shall be installed. Aluminum shall be extruded alloy 6063 T5, with chemical conversion coating, clear anodized or other specified finish. Refer to finish section.

SIZES

PA.1

CHANNEL SCREED
/CONTROL JOINT

| DIM. A REVEAL DEPTH | DIM. B REVEAL WIDTH | NUMBER | |
|---------------------------|---------------------------|-------------|---------------|
| | | NON-VENTED | VENTED |
| 1/8"* | 3/4" | PCS-125-75 | PCS-125-V-75 |
| 1/8"* | 1 1/2" | PCS-125-150 | PCS-125-V-150 |
| 3/8"* | 1/2" | PCS-375-50 | PCS-375-V-50 |
| 3/8"* | 3/4" | PCS-375-75 | PCS-375-V-75 |
| 3/8"* | 1" | PCS-375-100 | PCS-375-V-100 |
| 3/8"* | 1 1/2" | PCS-375-150 | PCS-375-V-150 |
| 3/8" | 3" | PCS-375-300 | PCS-375-V-300 |
| 1/2" | 1/2" | DCS-50-50 | DCS-50-V-50 |
| 1/2" | 3/4" | DCS-50-75 | DCS-50-V-75 |
| 1/2" | 1" | DCS-50-100 | DCS-50-V-100 |
| 1/2" | 1 1/2" | DCS-50-150 | DCS-50-V-150 |
| 1/2" | 2" | DCS-50-200 | DCS-50-V-200 |
| 1/2" | 3" | DCS-50-300 | DCS-50-V-300 |
| 1/2" | 4" | DCS-50-400 | DCS-50-V-400 |
| 5/8" | 1/2" | DCS-625-50 | DCS-625-V-50 |
| 5/8" | 3/4" | DCS-625-75 | DCS-625-V-75 |
| 5/8" | 1" | DCS-625-100 | DCS-625-V-100 |
| 5/8" | 1 1/2" | DCS-625-150 | DCS-625-V-150 |

| DIM. A REVEAL DEPTH | DIM. B REVEAL WIDTH | NUMBER | |
|---------------------------|---------------------------|-------------|---------------|
| | | NON-VENTED | VENTED |
| 5/8" | 2" | DCS-625-200 | DCS-625-V-200 |
| 5/8" | 2 1/2" | DCS-625-250 | DCS-625-V-250 |
| 5/8" | 3" | DCS-625-300 | DCS-625-V-300 |
| 5/8" | 4" | DCS-625-400 | DCS-625-V-400 |
| 5/8" | 6" | DCS-625-600 | DCS-625-V-600 |
| 3/4" | 1/2" | PCS-75-50 | PCS-75-V-50 |
| 3/4" | 3/4" | PCS-75-75 | PCS-75-V-75 |
| 3/4" | 1" | PCS-75-100 | PCS-75-V-100 |
| 3/4" | 1 1/2" | PCS-75-150 | PCS-75-V-150 |
| 3/4" | 2" | PCS-75-200 | PCS-75-V-200 |
| 3/4" | 2 1/2" | PCS-75-250 | PCS-75-V-250 |
| 3/4" | 3" | PCS-75-300 | PCS-75-V-300 |
| 3/4" | 4" | PCS-75-400 | PCS-75-V-400 |
| 3/4" | 6" | PCS-75-600 | PCS-75-V-600 |
| 1" | 3/4" | PCS-100-75 | PCS-100-V-75 |
| 1" | 1" | PCS-100-100 | PCS-100-V-100 |
| 1" | 3" | PCS-100-300 | PCS-100-V-300 |
| 1 1/2" | 1 1/2" | PCS-150-150 | PCS-150-V-150 |

*For one-coat stucco systems

Weep holes available upon request