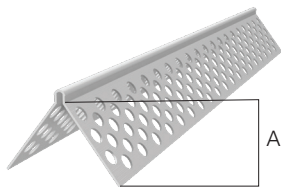
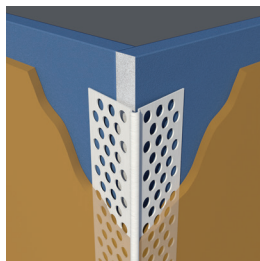


Corner Beads

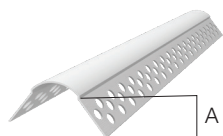
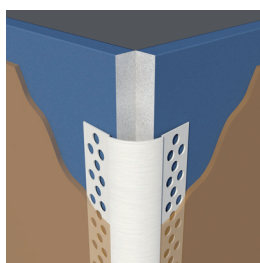
Designed to be used in EIFS and DEFS wall and ceiling systems. Provides hard to damage, rust proof, straight corners. Large perforations allow the matrix to easily flow through and bond to the substrate for a more durable corner. When joining continuous runs of corner bead, a preferred method of alignment is to miter the flanges. When creating corner bead intersections, such as exterior soffit corners, miter all flanges to prevent overlapping, which will cause poor bonding and alignment.



EIFS/DEFS Corner Bead

| Product Code | Finish Thickness | Insulation Thickness | (A) Flanges | Pieces per Box |
|--------------|------------------|----------------------|-------------|----------------|
| CB138E | 1/16" | All | 1-3/8" | 100 |
| CB158E | 1/16" | All | 1-5/8" | 75 |

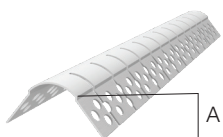
Note: - Available in 8 ft. and 10 ft. lengths



EIFS/DEFS Bullnose Corner Bead

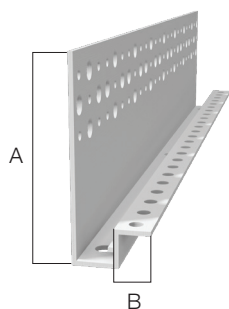
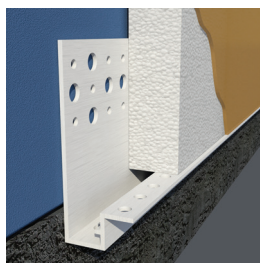
| Product Code | Finish Thickness | Insulation Thickness | (A) Flanges | Pieces per Box |
|--------------|------------------|----------------------|-------------|----------------|
| BCB100E | 1/16" | All | 1-3/8" | 50 |
| BCB100E-A | 1/16" | All | 1-3/8" | 50 |

Note: - Available in 8 ft. and 10 ft. lengths
- BCB100E-A is for arch applications



Starter Strips / Casing Beads

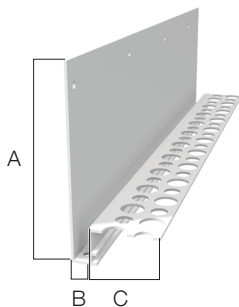
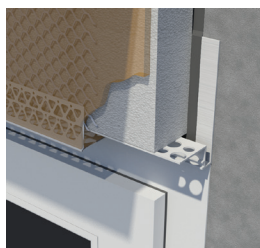
Designed to be used as base support starter strips and perimeter casing beads for Exterior Insulation and Finish Systems. Each product has unique features that address specific applications. Caulk all intersections, butt joints, ends and corners at time of installation.



Universal Starter Strip

One size fits all starter track that eliminates the need to inventory multiple sizes. Engineered to allow incidental moisture to escape through weep holes.

| Product Code | Finish Thickness | Insulation Thickness | (A) Back Flange | (B) Perforated Flange | Pieces per Box |
|--------------|------------------|----------------------|-----------------|-----------------------|----------------|
| UNI-Track | 1/16" | 1"-4" | 2-7/8" | 1" | 40 |
| UNI-Track XL | 1/16" | up to 5" | 2-7/8" | 2" | 30 |



CI Weep Track

Designed to be used with Vinyl Corp. #1 Corner Bead around windows and doors and at the foundation line to direct water drainage. Continuously insulated (CI) stucco assemblies with CI Weep Track have achieved the requirements of NFPA 285.

| Product Code | Insulation Thickness | (A) Back Flange | (B) Weep Trough | (C) Perforated Flange | Pieces per Box |
|--------------|----------------------|-----------------|-----------------|-----------------------|----------------|
| CIWT-350 | 1"-3" | 3-1/2" | 3/8" | 1-1/4" | 30 |

U.S. Patent Number D656,603

Note: - Approved for use with BASF Wall Systems: Platinum CI Stucco Ultra and Platinum CI Stucco Plus Systems