

## 1. PURPOSE

- 1.1 The purpose of this document is to establish typical guidelines for installation of TREMGrip®. The techniques involved may require modifications to adjust to jobsite conditions. Consult your local Tremco Sales Representative or Tremco Technical Services for specific design requirements.

## 2. SCOPE

- 2.1 This document will provide the necessary instructions for installation of TREMGrip to qualify for a manufacturer's warranty.

## 3. POSSIBLE SYSTEM COMPONENTS

- 3.1 Cartridge gun.  
3.2 Sausage gun.

## 4. AVAILABILITY

- 4.1 Contact your local Tremco Sales Representative, Tremco Distributor, or Customer Service for availability.

## 5. STORAGE

- 5.1 Store TREMGrip in original, undamaged packaging in a clean, dry, protected location with temperatures between 40 to 110 °F (5 to 43 °C).

## 6. SUBSTRATE PREPARATION

- 6.1 Prefit all materials prior to applying the adhesive.  
6.2 Protect surrounding area from excess adhesive.  
6.3 TREMGrip typically adheres to common construction substrates without primers. However, Tremco always recommends that a mock-up or field adhesion test be performed on the actual materials being used on the job to verify the need for a primer. For other materials, please contact Tremco Technical Services.  
6.4 Non-porous surfaces may need to be roughened with an abrasive to promote better adhesion.  
6.5 Surfaces to be bonded must be clean, dry, and free of frost, grease, and any other contaminants.

### TREMGrip PRODUCT COVERAGE

WIDTH X DEPTH (MM)	LINEAR METERS PER 300 ML CARTRIDGE	WIDTH X DEPTH (IN)	LINEAR FEET PER 300 ML CARTRIDGE
5 x 5	12.4	1/4 x 1/4	25
8 x 6	6.4	5/16 x 1/4	20
10 x 8	3.8	3/8 x 5/16	13
15 x 10	2	1/2 x 3/8	8
20 x 12	1.2	3/4 x 1/2	4
25 x 15	0.8	1 x 1/2	3
30 x 15	0.6	1 1/4 x 1/2	2.5

## 7. APPLICATION PROCEDURE

- 7.1 For cartridges, cut nozzle at a 45° angle to desired bead size and install in the cartridge gun. For sausages, remove clip to open foil and install in sausage gun.

7.2 Adhesive application:

- *For High Heat, Low Humidity Applications or Applications On A Vertical:* Apply adhesive to one side of the material being bonded by creating a 3" diameter solid circle applied every 2 to 3 ft as needed.
- *For All Other Applications:* Apply a 1/4" bead to one side of the substrate being bonded. For large area, apply parallel beads approximately 4" apart so there is an aerated gap remaining between the beads.

7.3 Bond the two components together immediately. Sufficient working strength will normally develop after approximately 10 minutes.

---

## 8. CLEANING

- 8.1 Remove excess adhesive immediately with xylene or mineral spirits before the adhesive cures.  
8.2 Cured adhesive can only be removed mechanically.

---

## 9. LIMITATIONS

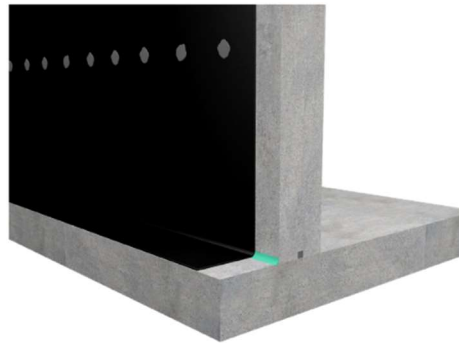
- 9.1 Not Suitable for bonding polyethylene, polypropylene, Teflon® or nylon.  
9.2 Not recommended for sheet laminate.  
9.3 Do not use as a structural glazing adhesive.  
9.4 Not suitable for bonding of plastics that are sensitive to stress cracking.  
9.5 Not recommended for prolonged exposure to water.  
9.6 Contact with bituminous or tar containing surfaces may lead to discoloration.  
9.7 Staining on natural stone may occur.  
9.8 If 2 non- porous substrates are adhered, the maximum width should not exceed 15 mm.

---

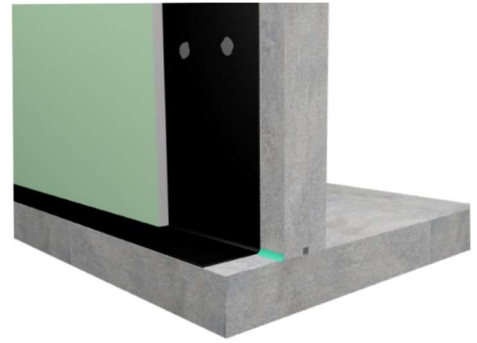
## 10. SAMPLE APPLICATION ON TREMPROOF®



*Ref 1 – TREMProof 250GC installed using Dymonic® 100 on Superstop*



*Ref 2 – TREMGrip applied to TREMProof 250GC*



*Ref 3 – Material installed over TREMProof 250GC*

---

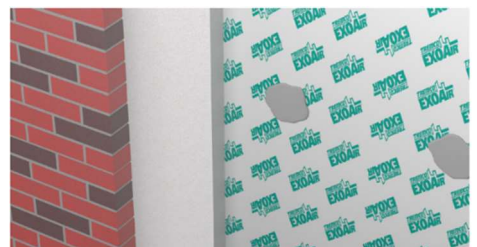
## 11. SAMPLE APPLICATION ON EXOAIR® 110AT



*Ref 1 – TREMGrip applied to ExoAir 110AT*

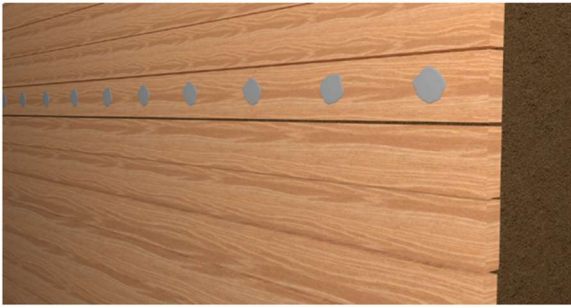


*Ref 2 – Insulation installed*

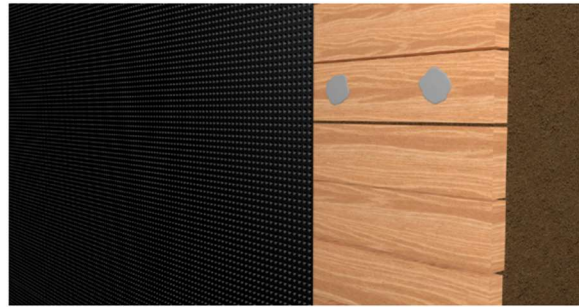


*Ref 3 – Application finished*

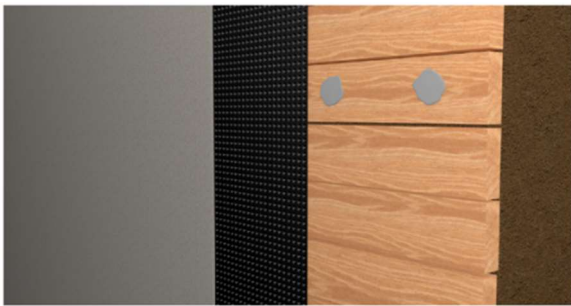
## 12. SAMPLE APPLICATION ON PARASEAL®



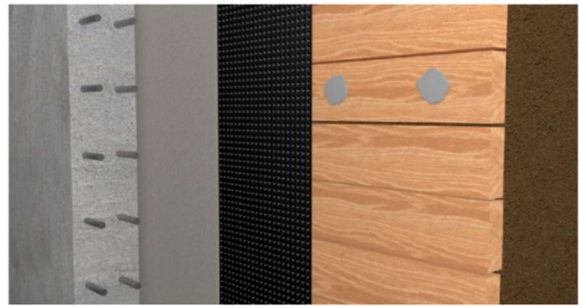
*Ref 1 – TREMGrip applied to wood lagging*



*Ref 2 – TremDrain™ installed over wood lagging*



*Ref 3 – Paraseal installed over TremDrain*



*Ref 4 – Application finished*