

APPLICATIONS:

	Plywood	Under Tile	Pedestrian Deck	Vehicular Deck	Athletic Surface	Roof Terrace	Mechanical Room	Balcony
PRIMERS								
Vulkem® Primer #171 ‡	•	•	•	•	•	•	•	•
Vulkem® 191 Primer	•	•	•	•	•	•	•	•
Tremco Epoxy Primer	•	•	•	•	•	•	•	•
TREMprime® Multi-Surface Urethane Primer	•		•				•	•
TREMprime® VB	•	•	•	•	•	•	•	•
BASE COATS								
Vulkem® 350	•	•	•	•	•	•	•	•
Vulkem® 350FC	•	•	•	•	•	•	•	•
Vulkem® 350NF	•	•	•	•	•	•	•	•
Vulkem® 360NF	•		•	•	•	•	•	•
INTERMEDIATE COATS								
Vulkem® 346				•				
Vulkem® 351								
Vulkem® 351NF	•							
Vulkem® 950NF				•		•		
Vulkem® Epoxy WC				•				
TOP COATS								
Vulkem® 346				•				
Vulkem® 351			•		•	•	•	•
Vulkem® 351NF	•		•		•	•	•	•
Vulkem® 950NF			•	•			•	
Vulkem® 951NF	•		•	•	•	•	•	•
SPECIALTY								
Vulkem® OC810	•		•			•	•	•

Reference the current product data sheets on our website at www.tremcosealants.com for more specific product information.
 For specific tie-in recommendations and Instructions, please contact your local Tremco Sales or Technical Service Representative.
 ‡Not for use in Canada

PROPERTIES:

	Low VOC	Components	UV Stable (Aliphatic)	Recommended Substrates:
PRIMERS				
Vulkem® Primer #171 ‡		1		Concrete, plywood, other porous substrates**
Vulkem® 191 Primer	•	1		Concrete, plywood, other porous substrates**, interlaminary, urethane coatings, TREMproof membranes
Tremco Epoxy Primer	•	2		Concrete, plywood, other porous substrates**, interlaminary, urethane coatings, TREMproof membranes
TREMprime® Multi-Surface Urethane Primer	•	2		Concrete, plywood, other porous substrates**, interlaminary, urethane coatings
TREMprime® VB	•	2		Concrete, plywood, other porous substrates**, interlaminary, urethane coatings, TREMproof membranes
BASE COATS				
Vulkem® 350		1		Concrete, metal
Vulkem® 350FC	•	2		Concrete, metal
Vulkem® 350NF	•	1		Concrete, metal
Vulkem® 360NF	•	2		Concrete, metal
INTERMEDIATE COATS				
Vulkem® 346		1	•	Vulkem 346
Vulkem® 351		1	•	Vulkem 350, 350NF, 360NF
Vulkem® 351NF		2	•	Vulkem 350NF
Vulkem® 950NF	•	2		Vulkem 350NF, 350FC
Vulkem® Epoxy WC	•	2		Vulkem 350, 350NF, 360NF
TOP COATS				
Vulkem® 346		1	•	Vulkem 346
Vulkem® 351		1	•	Vulkem 350, 350NF, 360NF
Vulkem® 351NF	•	2	•	Vulkem 350NF
Vulkem® 950NF	•	2		Vulkem 350NF, 350FC
Vulkem® 951NF	•	2	•	Vulkem 950NF
SPECIALTY				
Vulkem® OC810	•	1	•	Concrete, wood (with Tremco-approved primer)

Reference the current product data sheets on our website at www.tremcosealants.com for more specific product information.

For specific tie-in recommendations and Instructions, please contact your local Tremco Sales or Technical Service Representative.

*Prior approval required by Tremco Technical Services; approval is based on compatibility and adhesion testing.

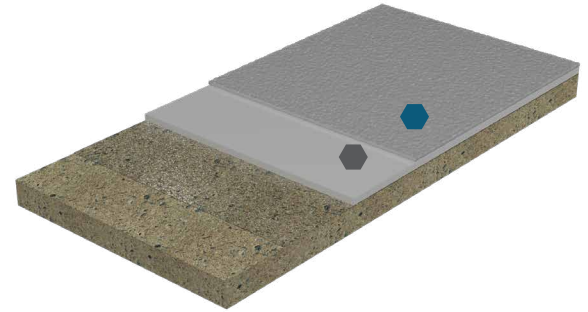
‡Not for use in Canada

PEDESTRIAN SYSTEMS

Ideal for plazas, recreation decks, balconies, pool decks, mechanical rooms, stadiums, athletic surfaces and similar applications requiring an elastomeric waterproofing system.

STANDARD PEDESTRIAN

Two-coat systems for applications that will receive light-to-medium pedestrian traffic, such as balconies, mechanical rooms, walkways and terraces.



Product Options		Coverage Rate	Wet Mils
Base Coats	Vulkem 350	40 to 64 ft ² /gal	25 to 40
	Vulkem 350NF	64 ft ² /gal	25
	Vulkem 360NF	64 ft ² /gal	25
Top Coats	Vulkem 351	105 ft ² /gal	15
	Vulkem 351NF	105 ft ² /gal	15
	Vulkem 950NF	133 ft ² /gal	12
	Vulkem 951NF	133 ft ² /gal	12

Product Options		Coverage Rate	Wet Mils
Base	Vulkem 350FC	64 ft ² /gal	25
Top	Vulkem 950NF	133 ft ² /gal	12
	Vulkem 951NF	133 ft ² /gal	12

Typical Systems

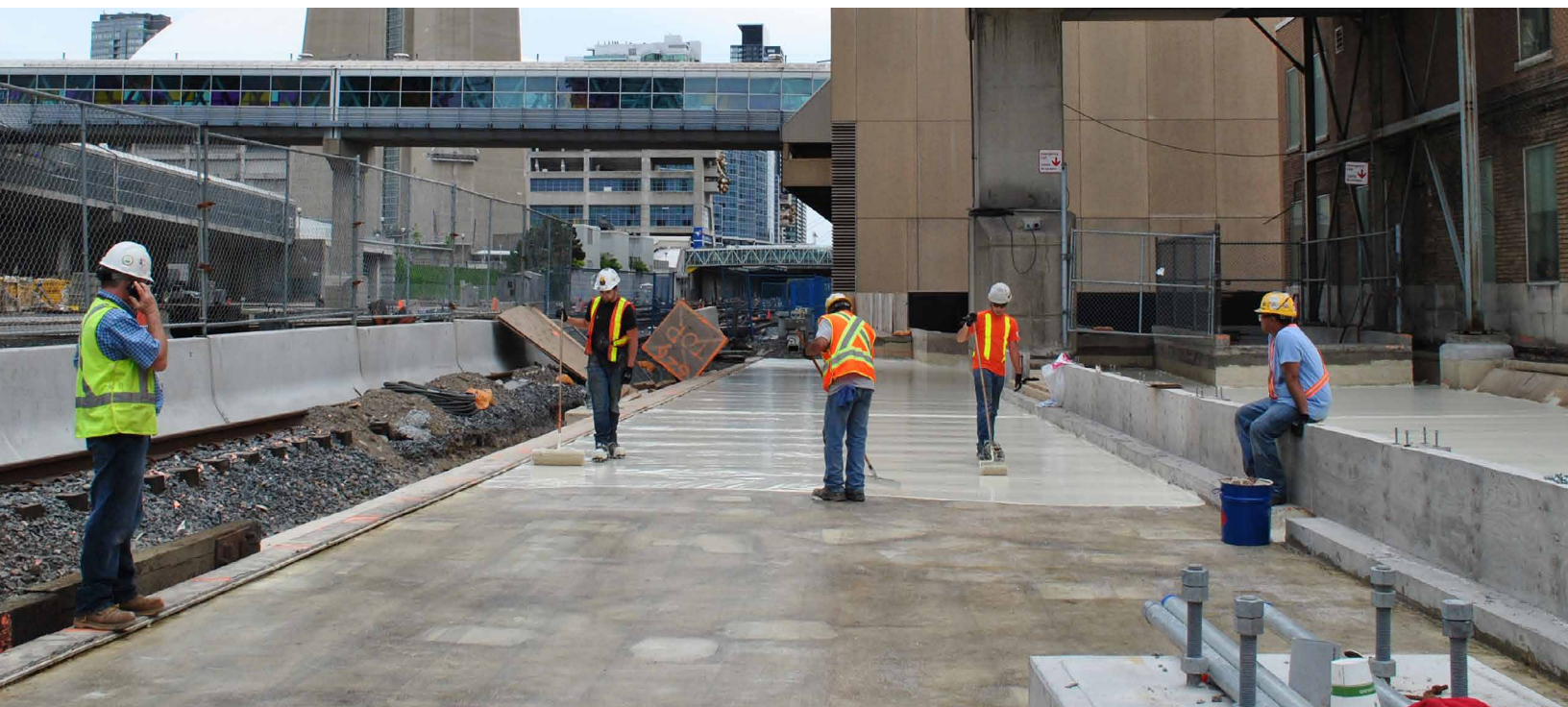
Standard Single-Component: 350NF / 351

Standard Two-Component: 350FC/951NF

Low VOC: 350NF / 351NF

Quick-Cure, Low VOC: 360NF / 951NF

Contact your local Tremco Sales Representative to determine the highest-performing system based on regional needs.

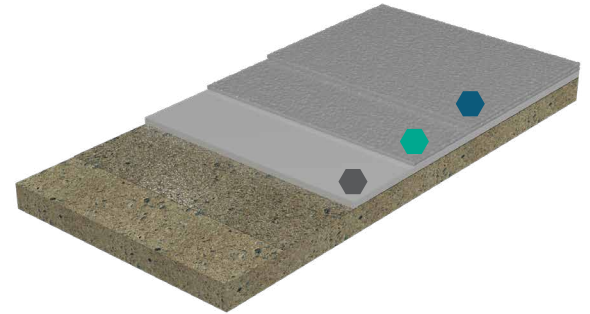


PEDESTRIAN SYSTEMS

Ideal for plazas, recreation decks, balconies, pool decks, mechanical rooms, stadiums, athletic surfaces and similar applications requiring an elastomeric waterproofing system.

HEAVY-DUTY PEDESTRIAN

Three-coat systems for areas that will be exposed to steady foot traffic, such as stadiums, amenity decks and pedestrian bridges.



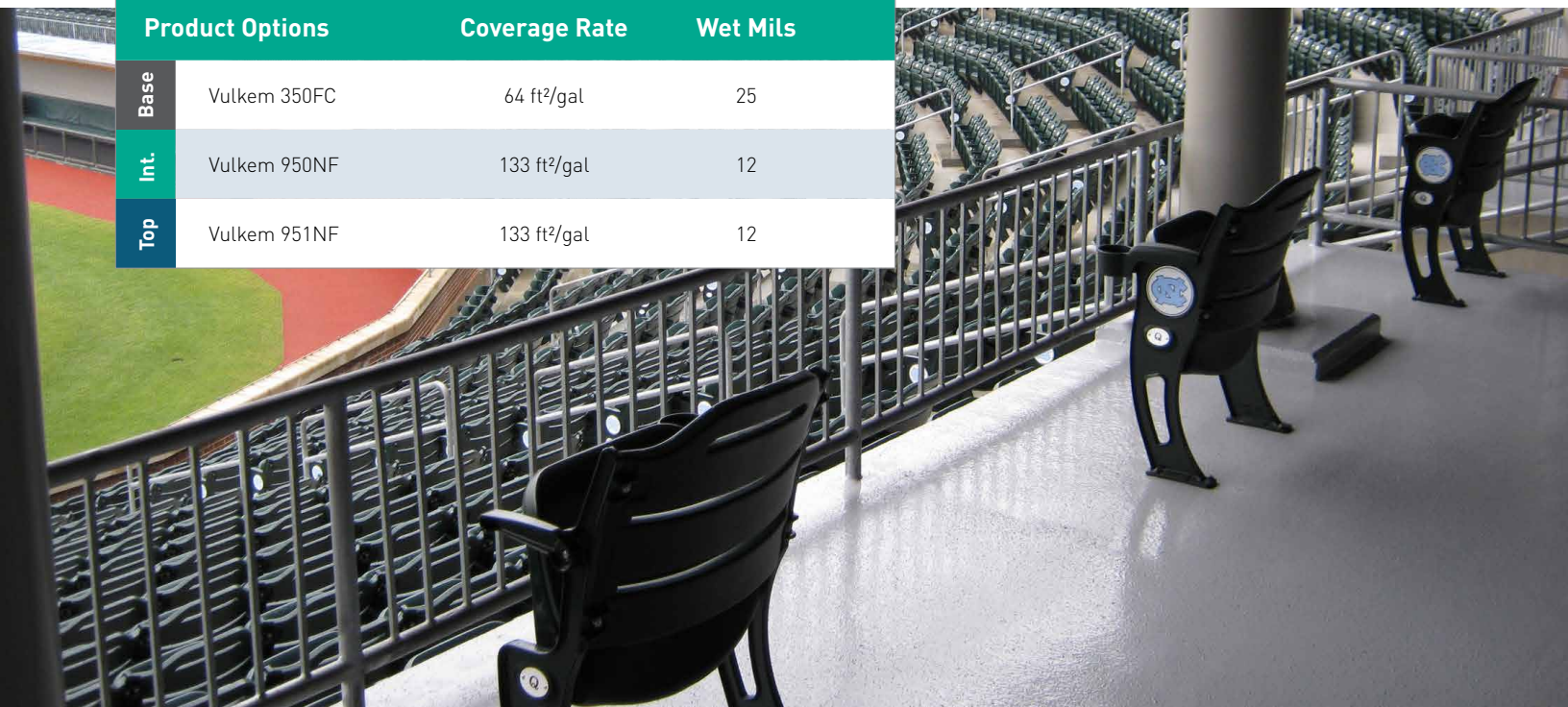
	Product Options	Coverage Rate	Wet Mils
Base Coats	Vulkem 350	40 to 64 ft ² /gal	25 to 40
	Vulkem 350NF	64 ft ² /gal	25 to 40
	Vulkem 360NF	64 ft ² /gal	25 to 40
Intermediate	Vulkem 351	105 ft ² /gal	15
	Vulkem 351NF	105 ft ² /gal	15
	Vulkem 950NF	133 ft ² /gal	12
Top Coats	Vulkem 351	105 ft ² /gal	15
	Vulkem 351NF	105 ft ² /gal	15
	Vulkem 950NF	133 ft ² /gal	12
	Vulkem 951NF	133 ft ² /gal	12

Typical Systems

Standard Single-Component: 350NF / 351 / 351
Standard Two-Component: 350FC / 950NF / 951NF
Quick-Cure, Low VOC: 360NF / 951NF / 951NF

Contact your local Tremco Sales Representative to determine the highest-performing system based on regional needs.

	Product Options	Coverage Rate	Wet Mils
Base	Vulkem 350FC	64 ft ² /gal	25
Int.	Vulkem 950NF	133 ft ² /gal	12
Top	Vulkem 951NF	133 ft ² /gal	12

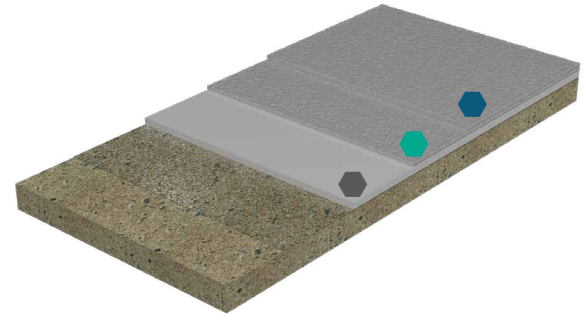


VEHICULAR SYSTEMS

Ideal for waterproofing concrete slabs and protecting occupied areas underneath from water damage, while protecting from the damaging effects of water, deicing salts, chemicals, gasoline, oils and anti-freeze.

STANDARD VEHICULAR

Three-coat systems for areas that will be exposed to standard vehicular traffic.



	Product Options	Coverage Rate	Wet Mils
Base Coats	Vulkem 350	40 to 64 ft ² /gal	25
	Vulkem 350NF	64 ft ² /gal	25
	Vulkem 360NF	64 ft ² /gal	25
Intermediate	Vulkem 346	105 ft ² /gal	15
	Vulkem 950NF	133 ft ² /gal	12
	Vulkem Epoxy WC	133 ft ² /gal	12
Top Coats	Vulkem 346	133 to 160 ft ² /gal	10 to 12
	Vulkem 950NF	133 ft ² /gal	12
	Vulkem 951NF	133 ft ² /gal	12

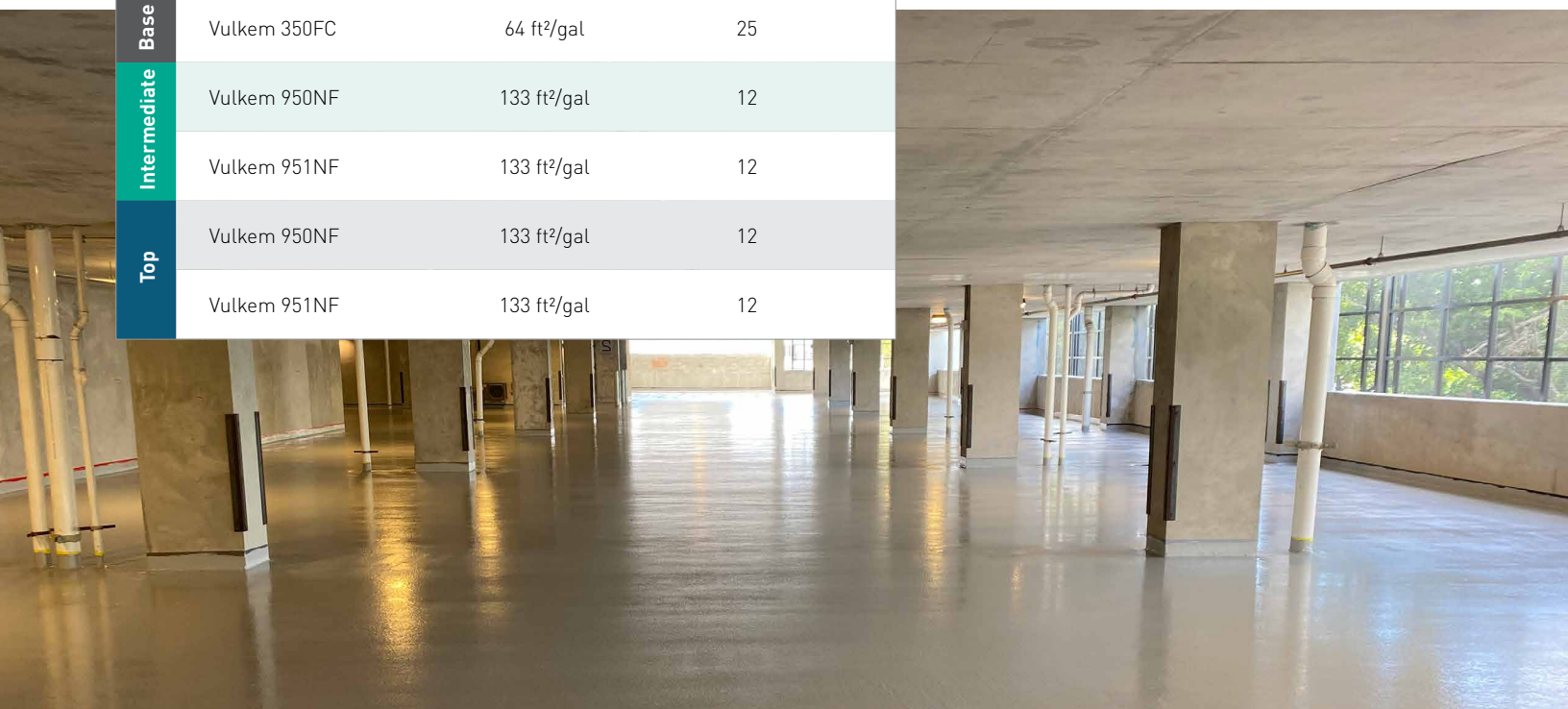
Typical Systems

Standard Single-Component: 350NF / 346 / 346
Standard Two-Component: 350FC / 950NF / 951NF
Low VOC, Indoor: 350NF / 950NF / 950NF
Low VOC, UV Stable: 350NF / 950NF / 951NF
Enhanced Durability: 350NF / Epoxy WC / 346

Vulkem 360NF can be used as a quick-cure, or low-temperature option.

Contact your local Tremco Sales Representative to determine the highest-performing system, based on regional needs.

	Product Options	Coverage Rate	Wet Mils
Base	Vulkem 350FC	64 ft ² /gal	25
Intermediate	Vulkem 950NF	133 ft ² /gal	12
	Vulkem 951NF	133 ft ² /gal	12
Top	Vulkem 950NF	133 ft ² /gal	12
	Vulkem 951NF	133 ft ² /gal	12

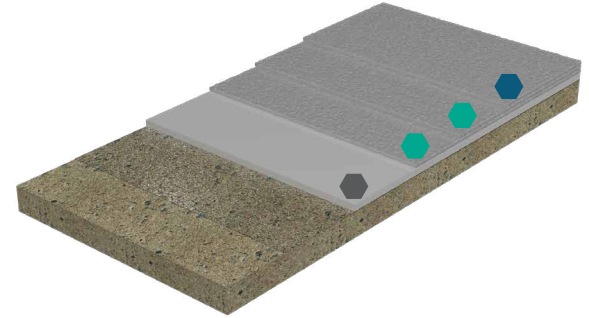


VEHICULAR SYSTEMS

Ideal for waterproofing concrete slabs and protecting occupied areas underneath from water damage, while protecting from the damaging effects of water, deicing salts, chemicals, gasoline, oils and anti-freeze.

HEAVY-DUTY VEHICULAR

Heavy-duty, four-coat systems for areas that will be subjected to steady vehicular traffic.



	Product Options	Coverage Rate	Wet Mils
Base Coats	Vulkem 350	40 to 64 ft ² /gal	25
	Vulkem 350NF	64 ft ² /gal	25
	Vulkem 360NF	64 ft ² /gal	25
Intermediate	Vulkem 346	105 ft ² /gal	15
	Vulkem 950NF	133 ft ² /gal	12
	Vulkem Epoxy WC	100 ft ² /gal	16
Top Coats	Vulkem 346	133 to 160 ft ² /gal	10 to 12
	Vulkem 950NF	133 ft ² /gal	12
	Vulkem 951NF	133 ft ² /gal	12

Typical Systems

Standard Single-Component: 350NF / 346 / 346 / 346
Standard Two-Component: 350FC / 950NF / 951NF
Low VOC, Indoor: 350NF / 950NF / 950NF / 950NF
Low VOC, UV Stable: 350NF / 950NF / 950NF / 951NF
Enhanced Durability: 350NF / Epoxy WC / 346

Vulkem 360NF can be used as a quick-cure, or low-temperature option.

Contact your local Tremco Sales Representative to determine the highest-performing system, based on regional needs.

	Product Options	Coverage Rate	Wet Mils
Base	Vulkem 350FC	64 ft ² /gal	25
Intermediate	Vulkem 950NF	133 ft ² /gal	133 ft ² /gal
	Vulkem 951NF	133 ft ² /gal	12
Top	Vulkem 950NF	133 ft ² /gal	133 ft ² /gal
	Vulkem 951NF	133 ft ² /gal	12

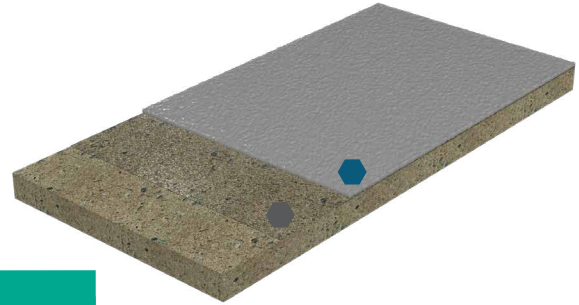


SPECIALTY SYSTEMS

Waterproof coatings for a variety of specialty applications, including one-coat and rapid-cure solutions, as well as systems for under-tile applications, mechanical rooms and areas subject to heavy abrasion.

BALCONY, LIGHT PEDESTRIAN & MECHANICAL ROOM

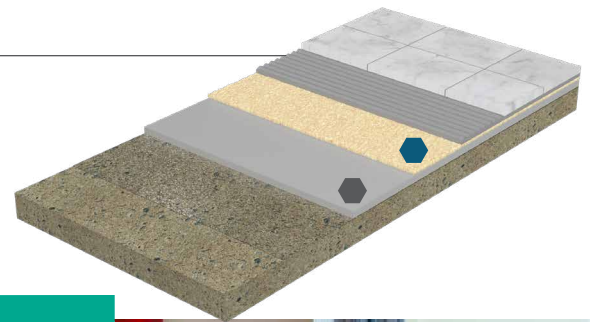
One-coat systems for areas that will receive light foot traffic such as balconies and mechanical rooms / work areas.



Product Options		Coverage Rate	Wet Mils
Base Coats	Vulkem Primer #171	100 to 600 ft ² /gal	
	Vulkem 191 Primer	400 to 450 ft ² /gal	
	TREMprime Multi-Surface Urethane Primer	200 to 300 ft ² /gal	
Top	Vulkem OC810	64 ft ² /gal	25

UNDER-TILE APPLICATIONS

Recommended two-coat system for tiles, pavers and bonded overburden.



Product Options		Coverage Rate	Wet Mils
Base	Vulkem 350NF	25 to 40 ft ² /gal	40 to 60
Top	Tremco Epoxy Primer	133 to 160 ft ² /gal	10 to 12

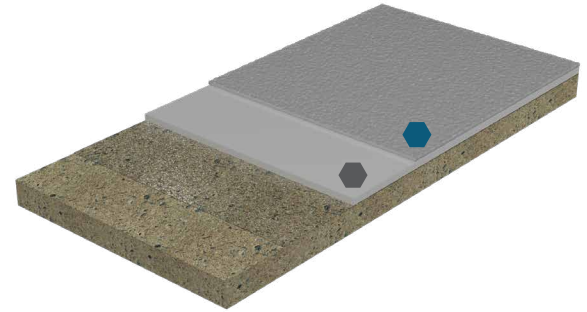


SPECIALTY SYSTEMS

Waterproof coatings for a variety of specialty applications, including one-coat and rapid-cure solutions, as well as systems for under-tile applications, mechanical rooms and areas subject to heavy abrasion.

MECHANICAL ROOM

Two-coat systems for mechanical rooms / work areas.



	Product Options	Coverage Rate	Wet Mils
Base Coats	Vulkem 350	40 to 64 ft ² /gal	25 to 40
	Vulkem 350NF	64 ft ² /gal	25 to 40
	Vulkem 360NF	64 ft ² /gal	25 to 40
Top Coats	Vulkem 351	105 ft ² /gal	15
	Vulkem 351NF	105 ft ² /gal	15
	Vulkem 950NF	133 ft ² /gal	12
	Vulkem 951NF	133 ft ² /gal	12

	Product Options	Coverage Rate	Wet Mils
Base	Vulkem 350FC	64 ft ² /gal	25
Top	Vulkem 950NF	133 ft ² /gal	12
	Vulkem 951NF	133 ft ² /gal	12

Typical Systems

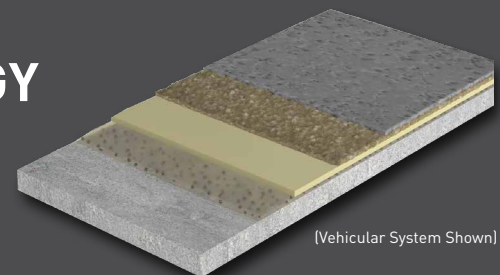
Standard Single-Component: 350NF / 351
Standard Two-Component: 350FC / 950NF
Low VOC: 350NF / 351NF
Low VOC, Quick-Cure: 360NF / 950NF

Contact your local Tremco Sales Representative to determine the highest-performing system based on regional needs.

VULKEM® EWS WITH PUMA TECHNOLOGY FOR EXTREME-WEAR APPLICATIONS

Vulkem EWS Coating Systems with PUMA technology provide superior elongation over traditional MMA/PMMA technology systems. These rapid-curing systems feature extreme durability, fast cure independent of low temperatures, crack bridging, tenacious adhesion and superior abrasion resistance.

For complete details and Vulkem EWS System offerings, please refer to the PUMA Technology brochure available on our website, or request a copy from your local Tremco Sales Representative.



(Vehicular System Shown)

