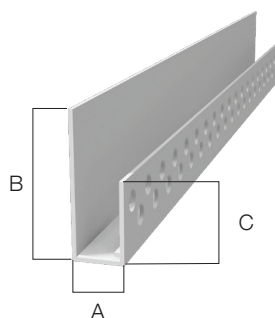
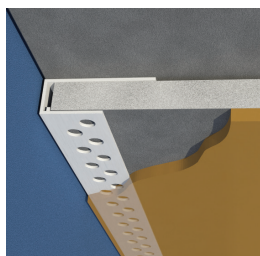


Starter Strips / Casing Beads

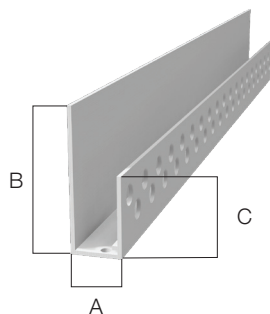
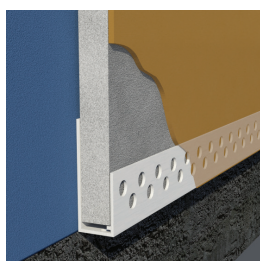
Designed to protect the raw edges of the board in Direct-Applied Exterior Finish Systems. Two rows of large perforations allow matrix to easily flow through and bond to substrate. Weep holes provide positive drainage. Vinyl Corp. Keylock™ Splice connectors are available for alignment and base for sealant. Caulk all intersections, butt joints, ends and corners at time of installation.



DEFS Starter Strip / Casing Bead

Product Code	Finish Thickness	(A) Board Thickness	(B) Back Flange	(C) Perforated Flange	Pieces per Box
DE/CS50-16	1/16"	1/2"	1-3/4"	5/8"	50
DE/CS58-16	1/16"	5/8"	1-3/4"	5/8"	50

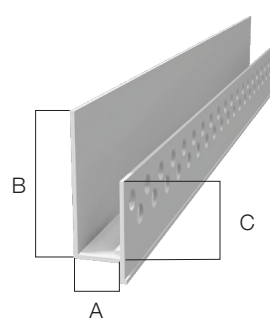
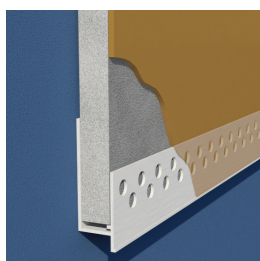
U.S. Patent Numbers 5,970,671 and 6,134,847



DEFS Starter Strip with Weep Holes

Product Code	Finish Thickness	(A) Board Thickness	(B) Back Flange	(C) Perforated Flange	Pieces per Box
DE/CS50-16W	1/16"	1/2"	1-3/4"	5/8"	50
DE/CS58-16W	1/16"	5/8"	1-3/4"	5/8"	50

U.S. Patent Numbers 5,970,671 and 6,134,847

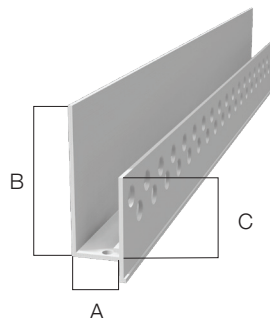
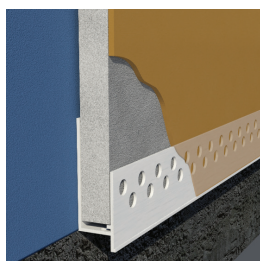


DEFS Starter Strip / Casing Bead with Drip

Drip leg assists in moving moisture away from opening or foundation wall.

Product Code	Finish Thickness	(A) Board Thickness	(B) Back Flange	(C) Perforated Flange	Pieces per Box
DE/CS50-16D	1/16"	1/2"	1-3/4"	5/8"	50
DE/CS58-16D	1/16"	5/8"	1-3/4"	5/8"	50

U.S. Patent Numbers 5,970,671 and 6,134,847



DEFS Starter Strip with Drip and Weep Holes

Drip leg assists in moving moisture away from opening or foundation wall.

Product Code	Finish Thickness	(A) Board Thickness	(B) Back Flange	(C) Perforated Flange	Pieces per Box
DE/CS50-16DW	1/16"	1/2"	1-3/4"	5/8"	50
DE/CS58-16DW	1/16"	5/8"	1-3/4"	5/8"	50

U.S. Patent Numbers 5,970,671 and 6,134,847