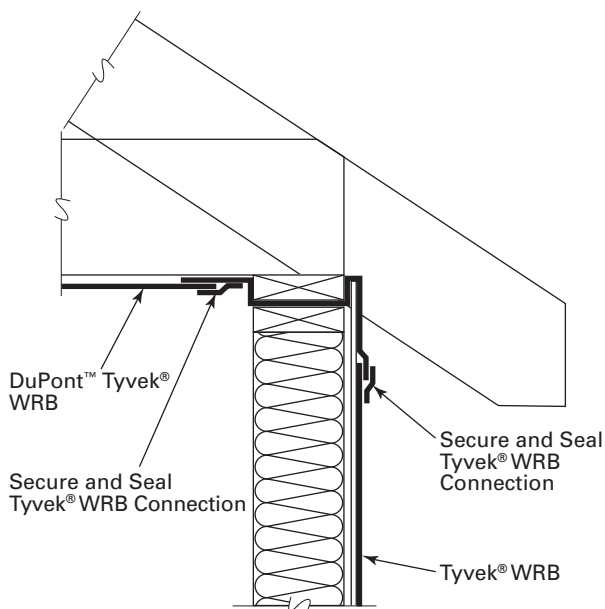


# Air Barrier Installation Detail: Top And Bottom Of Wall Interface

## Methods 1 & 2

This installation bulletin is intended for use when installing **DuPont™ Tyvek® WRBs** at the top and bottom of wall interfaces and should be used with the *DuPont™ Tyvek® Water-Resistive and Air Barriers Installation Guidelines For Buildings Less Than 5 Stories and Low-Rise Multi-Family Residential Buildings Less Than 6 Stories*. All installation requirements, including air barrier specific requirements from the Installation Guidelines must be followed

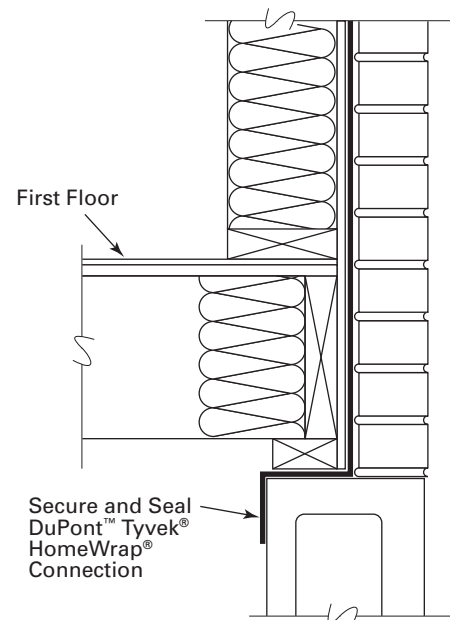
### Top of Wall Interface – Method 1



To ensure continuity of the air barrier membrane from the top of the wall to the interior, install the **Tyvek® WRB** as shown above.

1. Install the **Tyvek® WRB** onto the face of the wall according to the *DuPont™ Tyvek® Water-Resistive and Air Barriers Installation Guidelines For Buildings Less Than 5 Stories and Low-Rise Multi-Family Residential Buildings Less Than 6 Stories*.
2. Install the last course of the **Tyvek® WRB** as shown above so it extends beyond framing into interior of wall with adequate length so it can be overlapped by layer of **Tyvek® WRB** at ceiling.
3. Seal all horizontal seams with **DuPont™ Tyvek® Tape**.

### Bottom of Wall Interface – Method 1



To ensure continuity of the air barrier membrane from the bottom of the wall into the interior, install the **Tyvek® WRB** as shown above. Use Method 2 for slab on grade applications.

1. Install starter course of the **Tyvek® WRB** so it extends into the interior and onto the vertical face of the foundation.
2. After installation of wall framing and sheathing, fasten the **Tyvek® WRB** onto the face of the wall according to the *DuPont™ Tyvek® Air and Water-Resistive Barrier Installation Guidelines*.
3. Seal the the **Tyvek® WRB** at the interior foundation using **DuPont™ Residential Sealant** (or recommended sealant), **DuPont™ StraightFlash™**, or **DuPont™ Flashing Tape**. When sealing directly to concrete, wood, or other rough surfaces using **DuPont Self-Adhered Products**, use **DuPont™ Adhesive/Primer** (or recommended primer).

- Continue installation of the **DuPont™ Tyvek® WRB** onto face of wall according to the *DuPont™ Tyvek® Water-Resistive and Air Barriers Installation Guidelines For Buildings Less Than 5 Stories and Low-Rise Multi-Family Residential Buildings Less Than 6 Stories*.
- Seal all horizontal seams with **DuPont™ Tyvek® Tape**.

## Air Barrier Installation Detail: Top And Bottom Of Wall Interface – Method 2



- Apply **DuPont™ Residential Sealant**, or recommended sealant, along the top/bottom of the wall approximately 2 to 3" from the edge. Press the **Tyvek® WRB** into the sealant using firm hand pressure or a J-roller. This will temporarily hold the **Tyvek® WRB** in place in prior to step 2.



- Fasten the **Tyvek® WRB** to the studs as instructed in the *DuPont™ Tyvek® Water-Resistive and Air Barriers Installation Guidelines For Buildings Less Than 5 Stories and Low-Rise Multi-Family Residential Buildings Less Than 6 Stories*.

## Key Considerations

- Use > 1/4 inch bead of **DuPont™ Residential Sealant**.
- Use J-Roller or firm hand pressure over sealant interface to improve bond between **Tyvek® WRB** and wood framing.
- Check with sealant manufacturer to ensure compatibility with both substrate and **Tyvek® WRB**.
- Follow *DuPont™ Tyvek® Water-Resistive and Air Barriers Installation Guidelines For Buildings Less Than 5 Stories and Low-Rise Multi-Family Residential Buildings Less Than 6 Stories*, including, but not limited to:
  - Proper overlap of the **Tyvek® WRB**.
  - Proper installation and spacing of fasteners.
  - Proper sealing of all **Tyvek® WRB** seams using **Tyvek® Tape**. Use 3" **Tyvek® Tape** for both vertical and horizontal seams of **DuPont™ Tyvek® StuccoWrap®** and **DuPont™ Tyvek® DrainWrap™**.
  - Repair any areas of damage to the **Tyvek® WRB**.
  - Proper sealing of all penetrations made to the **Tyvek® WRB**.



For more information about DuPont Performance Building Solutions, please call 1-800-448-9835 or visit us at [building.dupont.com](http://building.dupont.com)