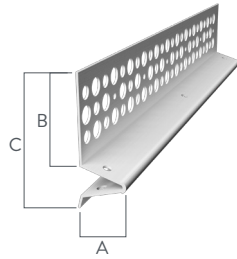


Weep Scream

Traditional Weep Screeds are required by both IBC and IRC at the base of a wall for drainage. However, the weep screed has moved beyond this area to include CMU, brick ledge transitions, mid-wall screeds, extended leg to protect sheathing installed over framing to sill plate, and horizontal/vertical transitions. Caulk all intersections, butt joints, ends and corners at the time of installation.

1-3/4" Weep Screeds

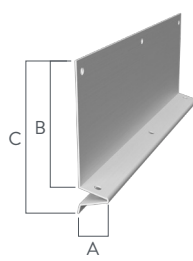
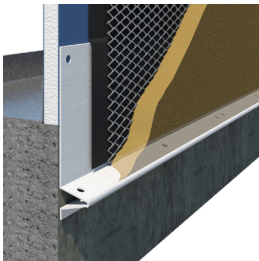


Designed to direct moisture from the stucco and to act as a stop. Install on masonry construction where stucco and foundation walls meet.

Product Code	(A) Ground	(B) Flange	(C) Overall Height	Length	Pieces per Box
WS38-250	3/8"	1-3/4"	2-1/2"	10'	70
WS50-250	1/2"	1-3/4"	2-1/2"	10'	70
WS58-250	5/8"	1-3/4"	2-1/2"	10'	70
WS75-250	3/4"	1-3/4"	2-1/2"	10'	70
WS78-250	7/8"	1-3/4"	2-1/2"	10'	60

Note: Also available with a solid/unperforated back flange. To order add U to the product code, example: WS38-250U.

3-1/2" Weep Screeds

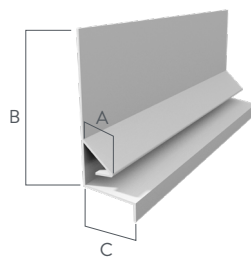
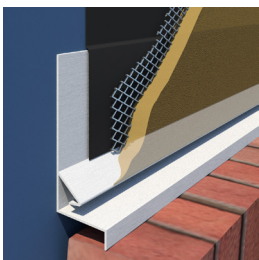


Designed to direct moisture from stucco and to act as a stop. Install on frame construction where stucco and foundation walls meet. The 3-1/2" solid attachment flange makes this style weep screed ASTM C1063, IBC and IRC code compliant.

Product Code	(A) Ground	(B) Flange	(C) Overall Height	Length	Pieces per Box
WS38-350U	3/8"	3-1/2"	4"	10'	50
WS50-350U	1/2"	3-1/2"	4"	10'	50
WS58-350U	5/8"	3-1/2"	4"	10'	40
WS75-350U	3/4"	3-1/2"	4"	10'	40
WS78-350U	7/8"	3-1/2"	4"	10'	30
WS138-350U	1-3/8"	3-1/2"	4"	10'	30

Note: Also available with an extended (1/2") bottom leg to go under sheathing. To order, add L to the product code, example: WSL50-350U.

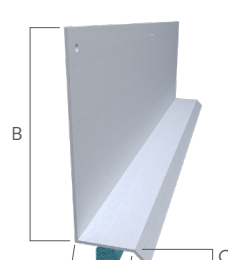
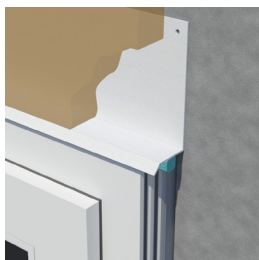
Positive Drain Weep Scream



Designed to provide a flashing transition from stucco, siding, stone over a brick ledge, at a wall transition.

Product Code	(A) Ground	(B) Flange	(C) Flange	Length	Pieces per Box
WSZ75-150	3/4"	4"	1-1/2"	10'	10
WSZ78-150	7/8"	4"	1-1/2"	10'	10
WSZ75-200	3/4"	4"	2"	10'	10
WSZ78-200	7/8"	4"	2"	10'	10

BackerBead Drip Flashing - 3-1/2" Flange



Designed to provide positive drainage above exterior window and door openings while also providing a caulk tray at the top of window and door frames for the proper seal and added moisture protection.

Product Code	(A) Ground	(B) Flange	(C) Drip Leg	Length	Pieces per Box
DFL50-25BB	1/2"	3-1/2"	1/4"	10'	35
DFL58-25BB	5/8"	3-1/2"	1/4"	10'	35
DFL75-25BB	3/4"	3-1/2"	1/4"	10'	35
DFL78-25BB	7/8"	3-1/2"	1/4"	10'	35
DFL100-25BB	1"	3-1/2"	1/4"	10'	35
DFL150-25BB	1-1/2"	3-1/2"	1/4"	10'	35
DFL200-25BB	2"	3-1/2"	1/4"	10'	35
DFL300-25BB	3"	3-1/2"	1/4"	10'	25
DFL400-25BB	4"	3-1/2"	1/4"	10'	25

U.S. Patent Number D861,196