



CONCRETE SURFACE RETARDER

INCRETE EZ EXPOSE



APPLICATIONS

- Integrally-colored concrete
- Decorative exposed aggregate
- Micro-etch, sandblast effect
- Large exposed stone
- Embedded exposed crushed shell
- Flatwork or precast concrete

PRODUCT SUPPORT

- Specification assistance
- CAD details
- Design consultation
- Color selection assistance
- R&D laboratories
- Applied samples
- Engineered-systems approach

INCRETE EZ EXPOSE is a water-based, concrete surface retarder designed to create exposed-aggregate finishes with consistency and ease. INCRETE EZ EXPOSE is formulated in four grades that result in different etch levels from a fine sandblast up to a full 1 in (2.5 cm) depth that will expose larger decorative stone. For best results, all grades are slightly colored so that application can be monitored visually to assure even and total coverage.

CUSTOMER SUPPORT

- **Technical Support** – Available for product selection and application questions.
- **Product Assistance** – Locate a contractor or distributor. Support literature and in-depth written application instructions.
- **Field Specialists** – Trained field specialists provide consultations and recommendations.
- **Design Consultation** – Complete with showroom and training facility.
- **Seminars** – 2-day seminars include classroom instruction on project estimation and marketing and sales tactics to grow your business all year long with hands-on product training (also available in Spanish). On-site distributor training and webinars by request are also available.
- **Trade shows** – Industry events, expos and conferences offering industry-related instruction.

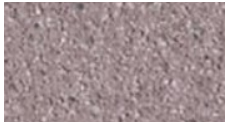


CONCRETE SURFACE RETARDER

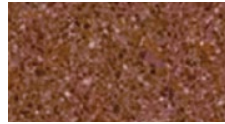
INCRETE EZ EXPOSE

EXPOSURE LEVELS

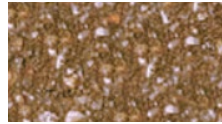
Four different grades provide consistent results to meet desired levels of aggregate exposure.



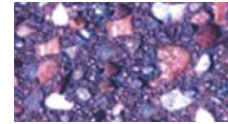
EZ Expose 5



EX Expose 25



EZ Expose 100



EZ Expose 200

COLOR COMBINATIONS

35 standard integral colors can be utilized to pre-color concrete, offering limitless design possibilities.



Sandstone CC730/3



Pecos Beige CC550/3



Fiesta CC320/3



San Jose Buff CC715/1.5



Austin Buff CC047/1



Phoenix Tan CC575/1



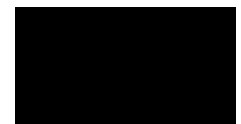
Sand Buff CC725/2



Desert Tan CC275/4



Autumn Brown CC050/5



Cocoa CC177/6



Yuma Gold CC990/2



Sombra CC805/3



Maplewood CC460/3



Saltillo CC705/2



Terra Cotta CC875/4



Tile Red CC895/3



Brick Red CC100/4



Tahoe Red CC850/5



Cherokee Red CC153/5



Redwood CC630/6



Navajo CC510/2



Cordova CC200/4



Sedona CC750/2



Tierra CC885/2



Pueblo CC595/4



Soft Gray CC802/.5



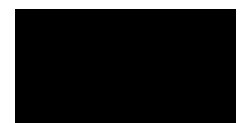
Silver Gray CC770/1



Euro Gray CC285/3



Dark Gray CC230/4



Charcoal CC150/6



Soft Gray CC802/.5
Requires White Pigment



Silver Gray CC770/1
Requires White Pigment



Euro Gray CC285/3
Requires Green Pigment



Dark Gray CC230/4
Requires Green Pigment



Charcoal CC150/6
Requires Blue Pigment

NOTE: This printed color chart is for reference purposes only. Euclid Chemical recommends choosing colors from actual test samples.

SS04 © 2020