



***Senergy***<sup>®</sup>

## **Senershield-R/-RS/-VB**

Framed Construction Incorporating Fluid-Applied Vapor  
Permeable and Impermeable Air/Water-Resistive Barriers

Typical Details

A brand of  
**MASTER**<sup>®</sup>  
**» BUILDERS**  
SOLUTIONS

(THIS PAGE INTENTIONALLY LEFT BLANK)

# Senershield-R/-RS/-VB

## Typical Details

### Framed Construction Incorporating Fluid-Applied Vapor Permeable and Impermeable Air/Water-Resistive Barriers

#### Table of Contents

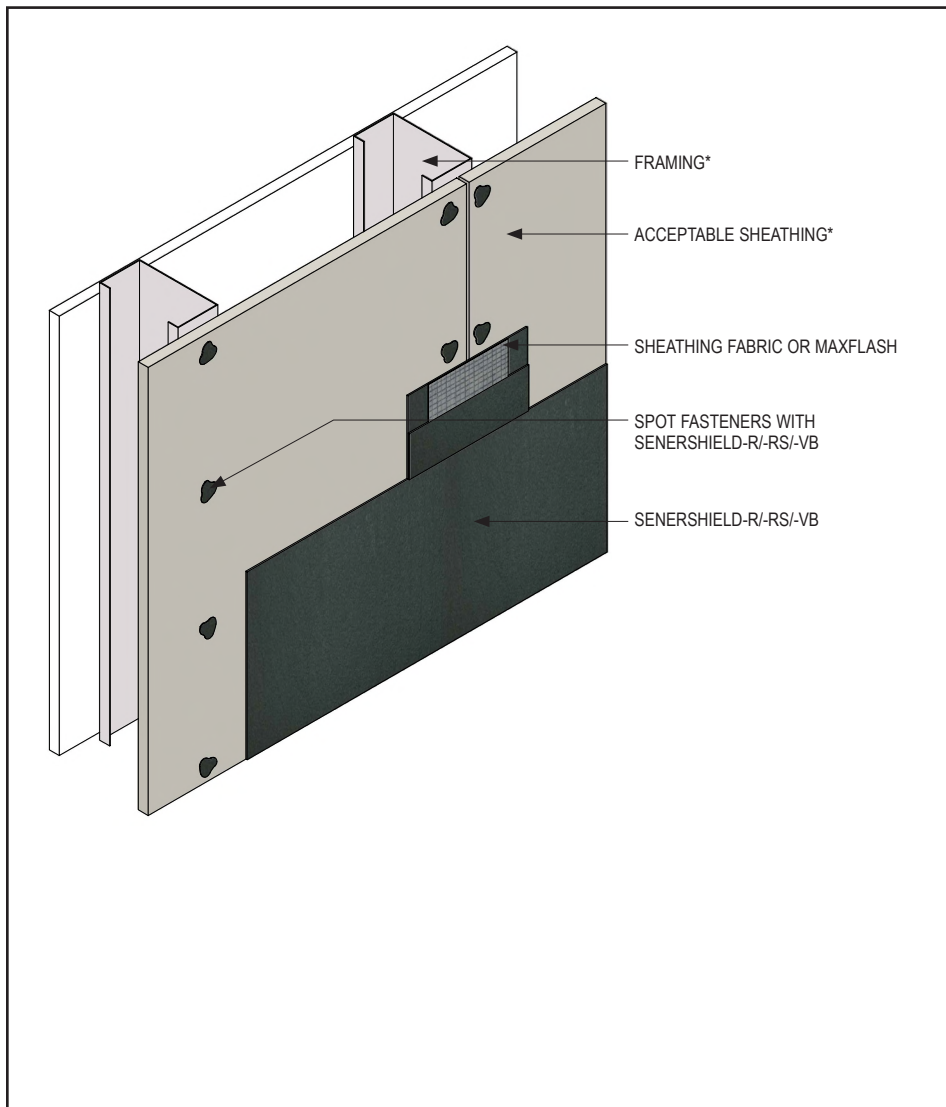
1. Typical Joint and Fastener Treatment
2. Typical Vertical Expansion Joint
3. Typical Rough Opening Corner Reinforcement
4. Typical Rough Opening Reinforcement with Sheathing Fabric
5. Typical Quick Corner Application
6. Typical Rough Opening Reinforcement with Quick Corners and Sheathing Fabric
7. Typical Rough Opening Reinforcement with Quick Corners and Master Builders Solutions WS Flash
8. Typical Penetration through Wall Construction (Fabric Only)
9. Typical through Wall Construction (with MaxFlash or Sealant)
10. Typical Penetration through Wall Construction (Rough Cut)
11. Typical Inside Corner Change in Substrate
12. Typical Inside Corner
13. Typical Outside Corner
14. Typical Window Flange Treatment
15. Typical Window Head
16. Typical Window Jamb
17. Typical Window Sill
18. Typical Pan Flashing
19. Typical Termination at Grade – Sheathing Overlapping Foundation
20. Typical Termination at Grade – Sheathing Overlapping Foundation with EIFS
21. Typical Termination at Grade – Sheathing Flush with Foundation
22. Typical Termination at Grade – Sheathing Flush with Foundation and EIFS
23. Typical Termination at Grade – Sheathing Overlapping Foundation with Siding
24. Typical Termination at Grade – Sheathing Flush with Foundation and Siding
25. Typical EIFS Abutment to Siding
26. Typical Termination at Grade – Masonry Veneer
27. Typical EIFS Abutment to Masonry Veneer
28. Typical Brick Anchor Treatment (Installed Prior to AWRB Application)
29. Typical Brick Anchor Treatment (Installed After AWRB Application)
30. Typical Brick Expansion Joint
31. Typical Termination at Grade – Brick
32. Typical Termination at Foundation incorporating Sheathing Fabric with Through Wall Flashing – Brick
33. Typical Termination at Foundation incorporating a Termination Bar with Through Wall Flashing – Brick
34. Typical EIFS Abutment to Brick with Drainage at Floorline
35. Typical EIFS Abutment to Brick
36. Typical Through Wall Flashing at Head – Brick
37. Typical Saddle Application incorporating Sheathing Fabric
38. Typical Saddle Application incorporating WS Flash
39. Typical Kick-Out Flashing
40. Typical Roof Edge Flashing
41. Typical Parapet Cap Flashing

#### Notes:

- **Install Master Builders Solutions materials in accordance with current installation instructions.**
- **Unsatisfactory conditions shall be reported to the General Contractor and corrected before the application of Master Builders Solutions products.**
- **The details within represent Master Builders Solutions Construction Systems US, LLC (hereinafter Master Builders Solutions) latest recommendations. They are presented in good faith by Master Builders Solutions. The details are subject to change without notice. Master Builders Solutions accepts no liability for the end use of the details. For conditions not shown, consult Master Builders Solutions for review of specific detail.**

(THIS PAGE INTENTIONALLY LEFT BLANK)

## Senershield-R/-RS/-VB TYPICAL JOINT AND FASTENER TREATMENT



AWRB-01

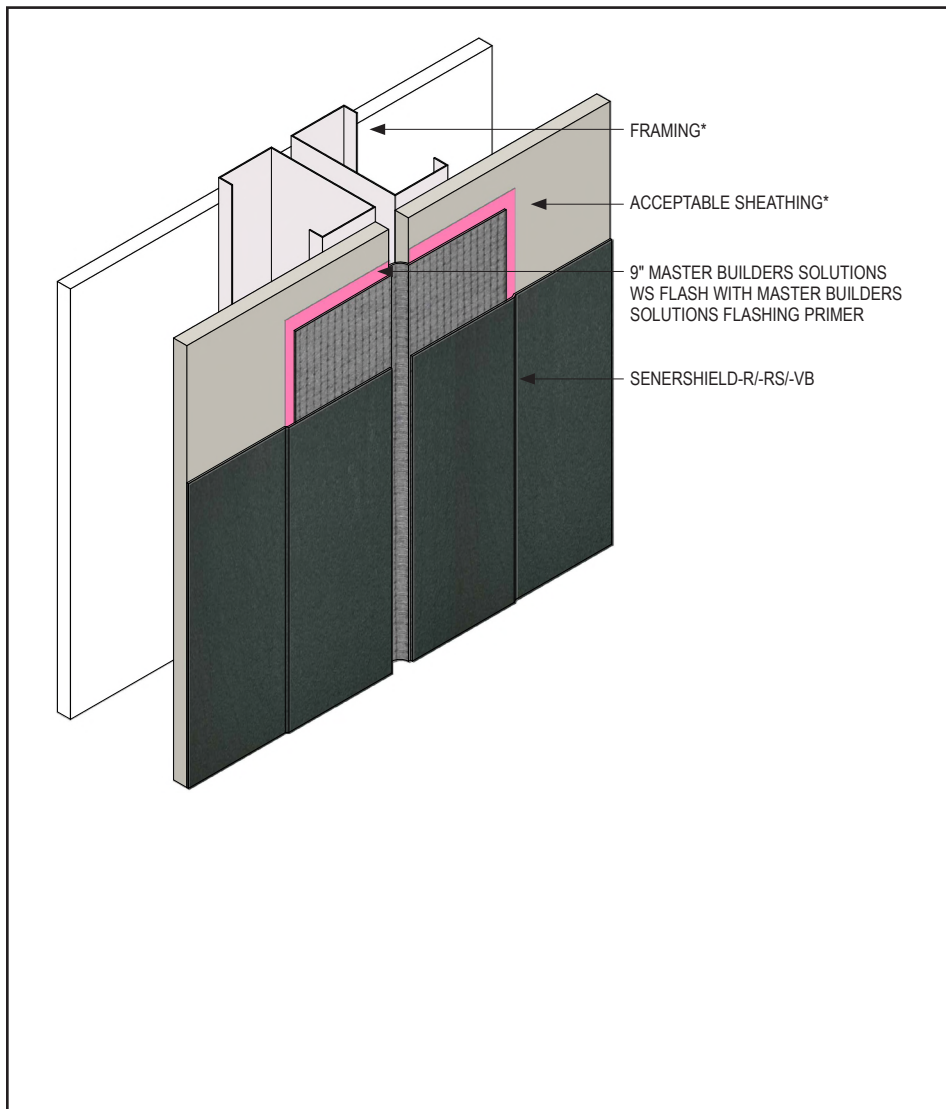
2109

(\*NOTE: BY OTHERS)

- Install Master Builders Solutions materials in accordance with current installation instructions.
- Unsatisfactory conditions shall be reported to the General Contractor and corrected before the application of Master Builders Solutions products.
- Ensure all fastener heads are spotted with Senershield-R/-RS/-VB.
- Spot all fasteners not at sheathing joints.
- Apply MaxFlash™ Liquid Flashing Membrane or embed Sheathing Fabric in Senershield-R/-RS/-VB, or MaxFlash over joints.
- For more information, reference the Senershield Application Guidelines for Joint Treatment and Flashing Rough Openings on Framed Construction technical bulletin.

This detail represents Master Builders Solutions Construction Systems US, LLC (hereinafter Master Builders Solutions) latest recommendations. It is presented in good faith by Master Builders Solutions. The detail is subject to change without notice. Master Builders Solutions accepts no liability for the end use of the detail. For conditions not shown, consult Master Builders Solutions for review of specific detail.

## Senershield-R/-RS/-VB TYPICAL VERTICAL EXPANSION JOINT



- Install Master Builders Solutions materials in accordance with current installation instructions.
- Unsatisfactory conditions shall be reported to the General Contractor and corrected before the application of Master Builders Solutions products.
- Provide sufficient slack in the Master Builders Solutions WS Flash at expansion joint to allow for movement.

AWRB-02

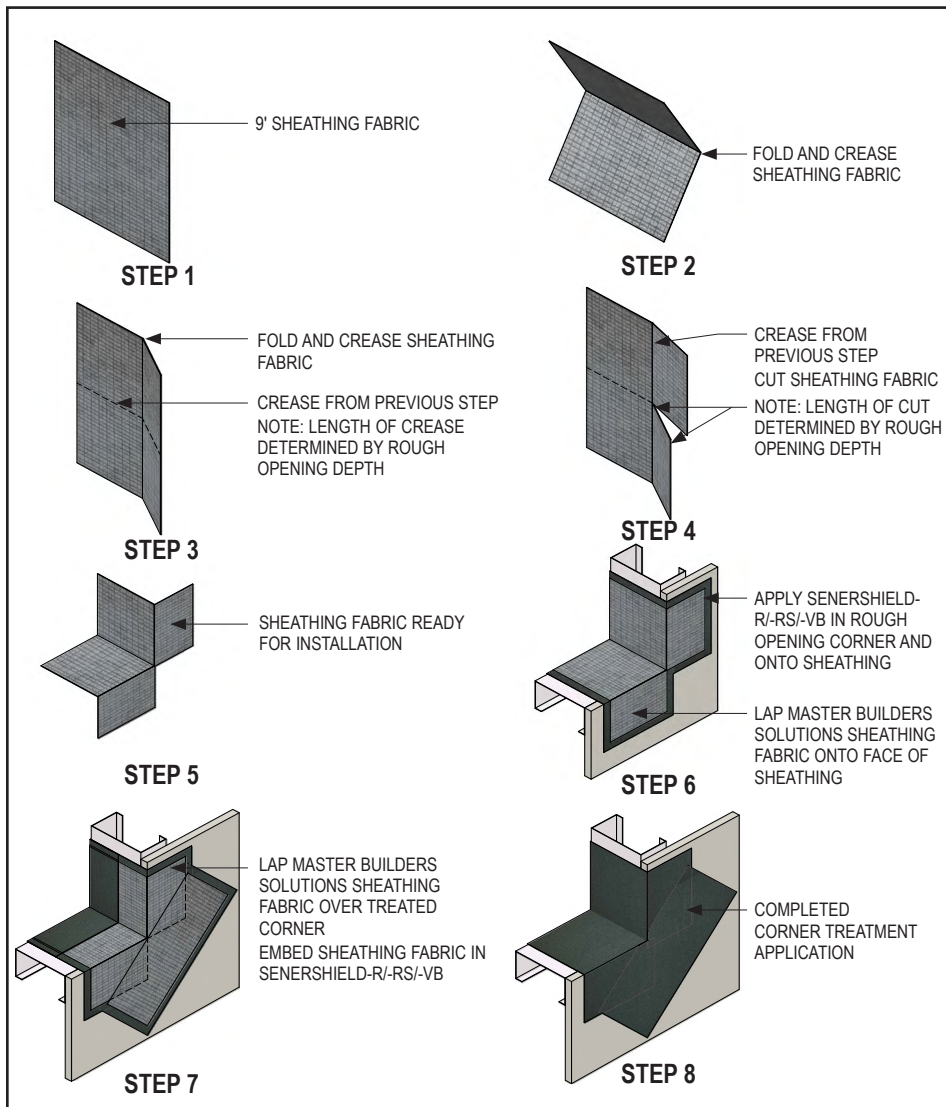
2109

(\*NOTE: BY OTHERS)

This detail represents Master Builders Solutions Construction Systems US, LLC (hereinafter Master Builders Solutions) latest recommendations. It is presented in good faith by Master Builders Solutions. The detail is subject to change without notice. Master Builders Solutions accepts no liability for the end use of the detail. For conditions not shown, consult Master Builders Solutions for review of specific detail.

## Senershield-R/-RS/-VB

### TYPICAL ROUGH OPENING CORNER REINFORCEMENT



AWRB-03

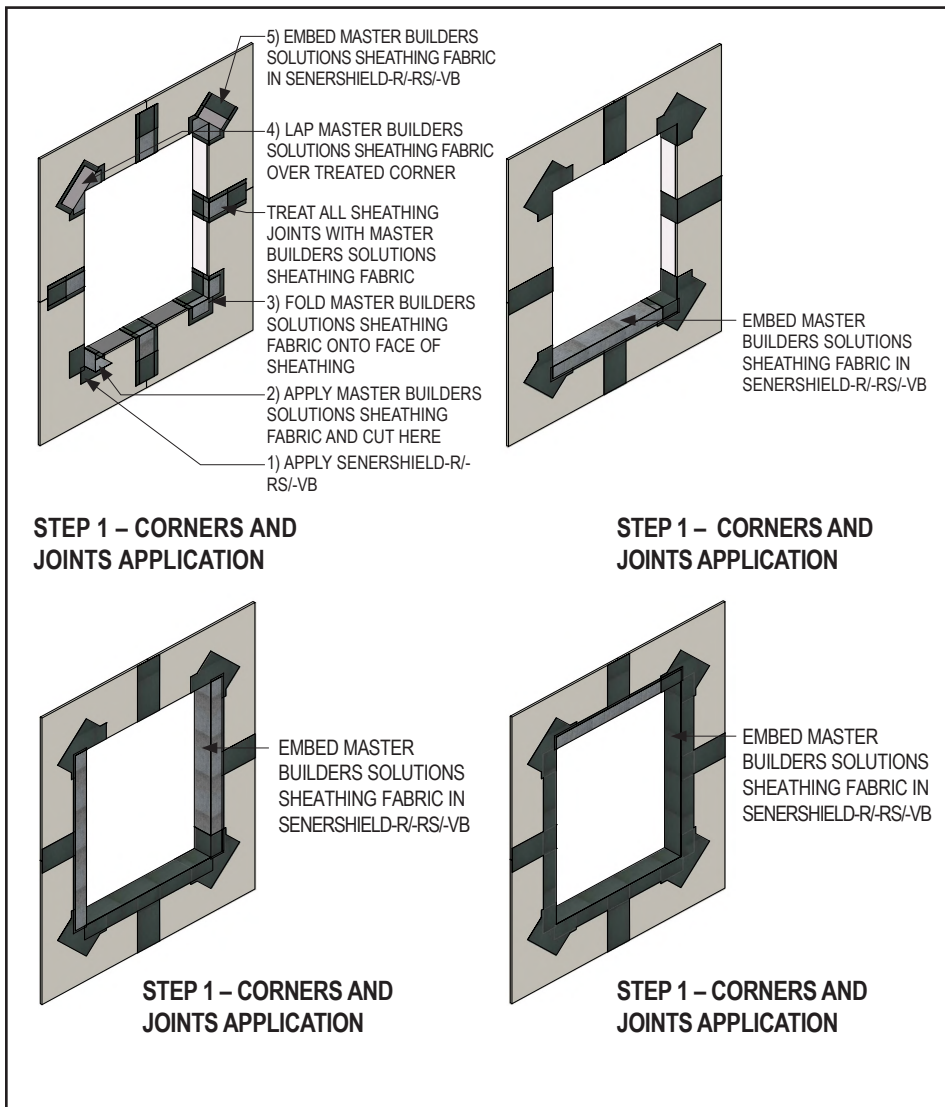
2109

(\*NOTE: BY OTHERS)

- Install Master Builders Solutions materials in accordance with current installation instructions.
- Unsatisfactory conditions shall be reported to the General Contractor and corrected before the application of Master Builders Solutions products.
- Install Master Builders Solutions materials in accordance with current installation instructions.
- Wrap rough opening in accordance with AWRB-7

This detail represents Master Builders Solutions Construction Systems US, LLC (hereinafter Master Builders Solutions) latest recommendations. It is presented in good faith by Master Builders Solutions. The detail is subject to change without notice. Master Builders Solutions accepts no liability for the end use of the detail. For conditions not shown, consult Master Builders Solutions for review of specific detail.

## Senershield-R/-RS/-VB TYPICAL ROUGH OPENING REINFORCEMENT WITH SHEATHING FABRIC



- Install Master Builders Solutions materials in accordance with current installation instructions.
- Unsatisfactory conditions shall be reported to the General Contractor and corrected before the application of Master Builders Solutions products.
- Install Master Builders Solutions materials in accordance with current installation instructions.
- Ensure Sheathing Fabric is embedded in Senershield-R/-RS/-VB.
- Ensure Senershield-R/-RS/-VB and Sheathing Fabric are installed without voids.
- Apply Master Builders Solutions WS Flash over punched stud openings

AWRB-04

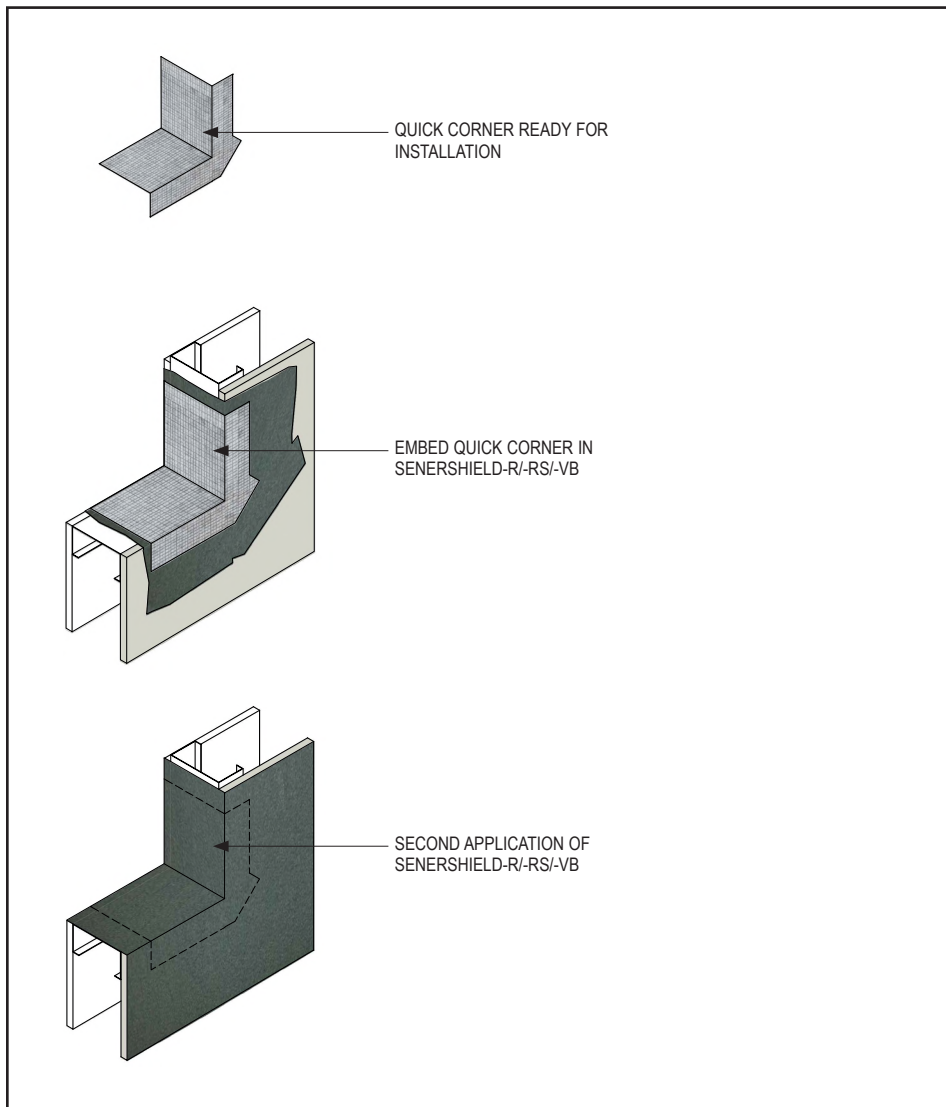
2109

(\*NOTE: BY OTHERS)

This detail represents Master Builders Solutions Construction Systems US, LLC (hereinafter Master Builders Solutions) latest recommendations. It is presented in good faith by Master Builders Solutions. The detail is subject to change without notice. Master Builders Solutions accepts no liability for the end use of the detail. For conditions not shown, consult Master Builders Solutions for review of specific detail.



## Senershield-R/-RS/-VB TYPICAL QUICK CORNER APPLICATION



AWRB-05

2109

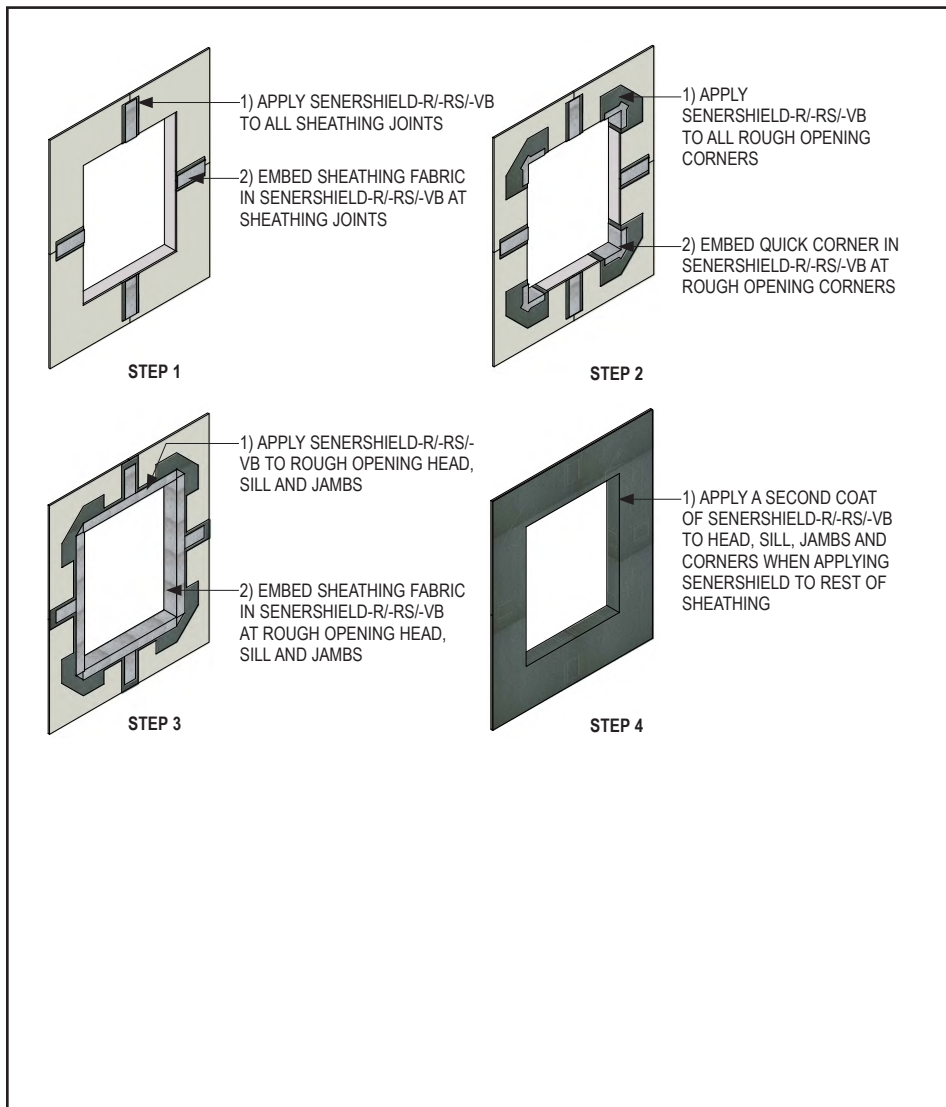
(\*NOTE: BY OTHERS)

- Install Master Builders Solutions materials in accordance with current installation instructions.
- Unsatisfactory conditions shall be reported to the General Contractor and corrected before the application of Master Builders Solutions products.
- For more information, reference the *Senershield Application Guidelines for Joint Treatment and Flashing Rough Openings on Framed Construction* technical bulletin.

This detail represents Master Builders Solutions Construction Systems US, LLC (hereinafter Master Builders Solutions) latest recommendations. It is presented in good faith by Master Builders Solutions. The detail is subject to change without notice. Master Builders Solutions accepts no liability for the end use of the detail. For conditions not shown, consult Master Builders Solutions for review of specific detail.

## Senershield-R/-RS/-VB

### TYPICAL ROUGH OPENING CORNER TREATMENT WITH QUICK CORNERS AND SHEATHING FABRIC



- Install Master Builders Solutions materials in accordance with current installation instructions.
- Unsatisfactory conditions shall be reported to the General Contractor and corrected before the application of Master Builders Solutions products.
- Apply Master Builders Solutions WS Flash over punched stud openings.
- For more information, reference the *Senershield Application Guidelines for Joint Treatment and Flashing Rough Openings on Framed Construction* technical bulletin.

AWRB-06

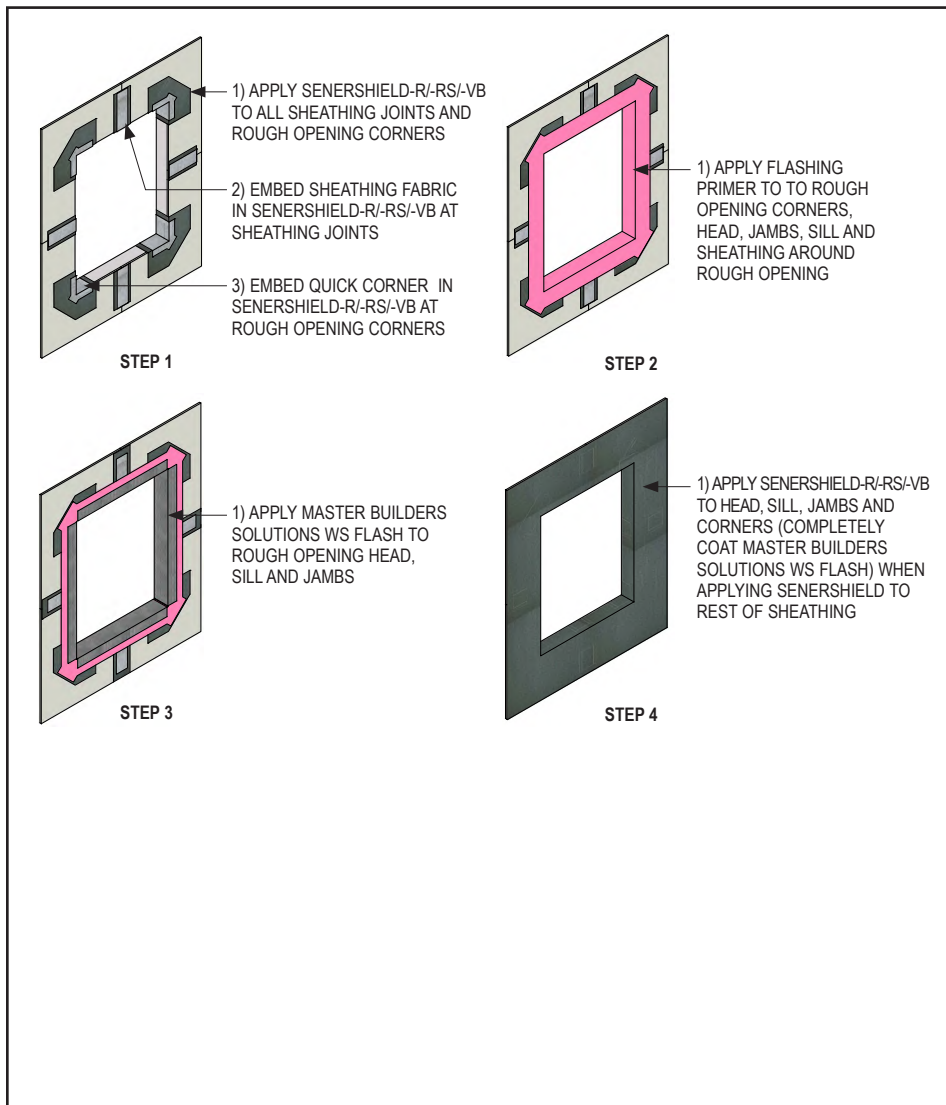
2109

(\*NOTE: BY OTHERS)

This detail represents Master Builders Solutions Construction Systems US, LLC (hereinafter Master Builders Solutions) latest recommendations. It is presented in good faith by Master Builders Solutions. The detail is subject to change without notice. Master Builders Solutions accepts no liability for the end use of the detail. For conditions not shown, consult Master Builders Solutions for review of specific detail.

## Senershield-R/-RS/-VB

### TYPICAL ROUGH OPENING CORNER TREATMENT WITH QUICK CORNERS AND MASTER BUILDERS SOLUTIONS WS FLASH



- Install Master Builders Solutions materials in accordance with current installation instructions.
- Unsatisfactory conditions shall be reported to the General Contractor and corrected before the application of Master Builders Solutions products.
- For more information, reference the *Senershield Application Guidelines for Joint Treatment and Flashing Rough Openings on Framed Construction* technical bulletin.

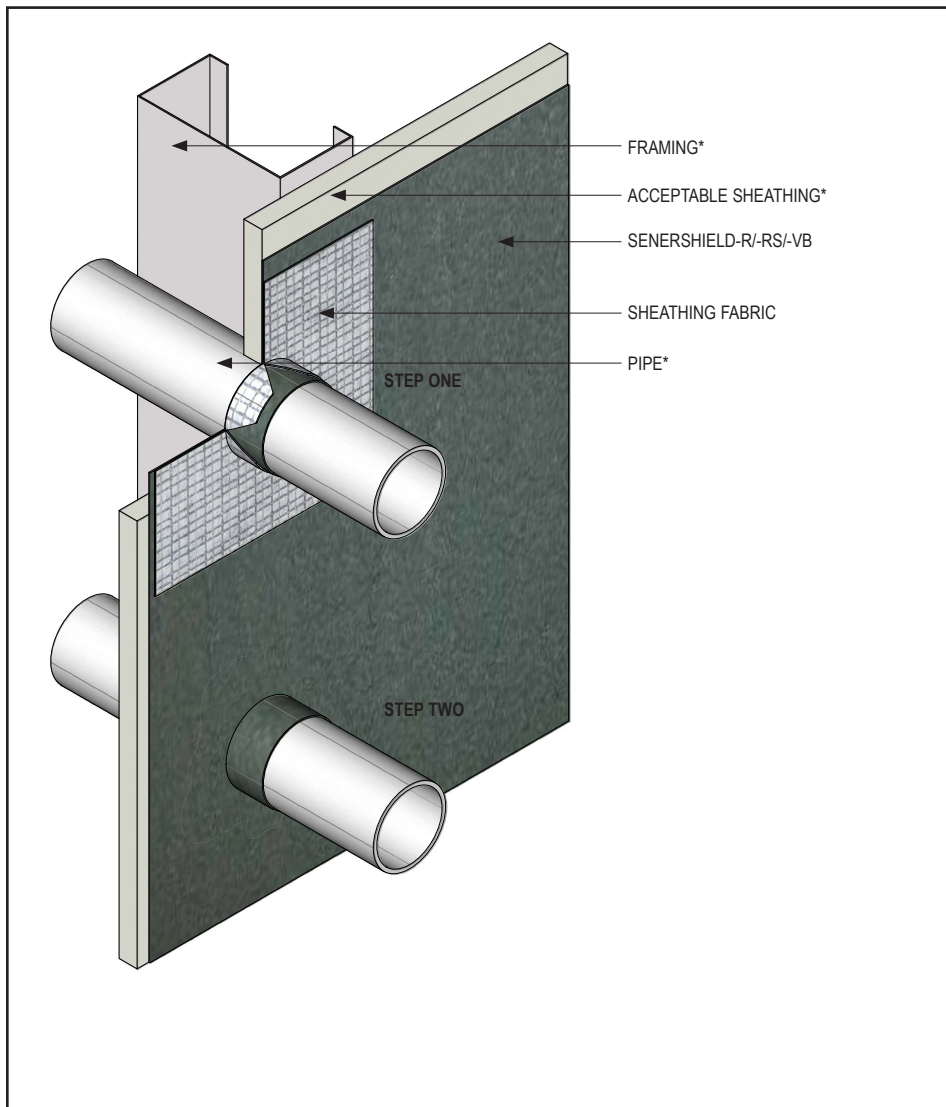
AWRB-07

2109

(\*NOTE: BY OTHERS)

This detail represents Master Builders Solutions Construction Systems US, LLC (hereinafter Master Builders Solutions) latest recommendations. It is presented in good faith by Master Builders Solutions. The detail is subject to change without notice. Master Builders Solutions accepts no liability for the end use of the detail. For conditions not shown, consult Master Builders Solutions for review of specific detail.

## Senershield-R/-RS/-VB TYPICAL PENETRATION THROUGH WALL CONSTRUCTION (FABRIC ONLY)



- Install Master Builders Solutions materials in accordance with current installation instructions.
- Unsatisfactory conditions shall be reported to the General Contractor and corrected before the application of Master Builders Solutions products.
- Cut a square piece of Sheathing Fabric large enough to extend past the pipe by 2" in each direction.
- At the center of the square piece of Sheathing Fabric, pierce a small hole with a blade or scissors.
- With a blade or scissors, cut an "X". Turn the square about 45° and cut another X. The center point of both "X"s will be the point you pierced previously.
- Insert the pipe through the newly cut square so it is centered with a minimum of 2" on each side with the cut flaps point outward. The square should be flush with the sheathing, See Step 1.
- Embed the Sheathing Fabric in Senershield-R/-RS/-VB and coat the flaps around the pipe, See Step 2.
- Wrap a 1" strip of Sheathing Fabric embedded in Senershield-R/-RS/-VB around the flaps.

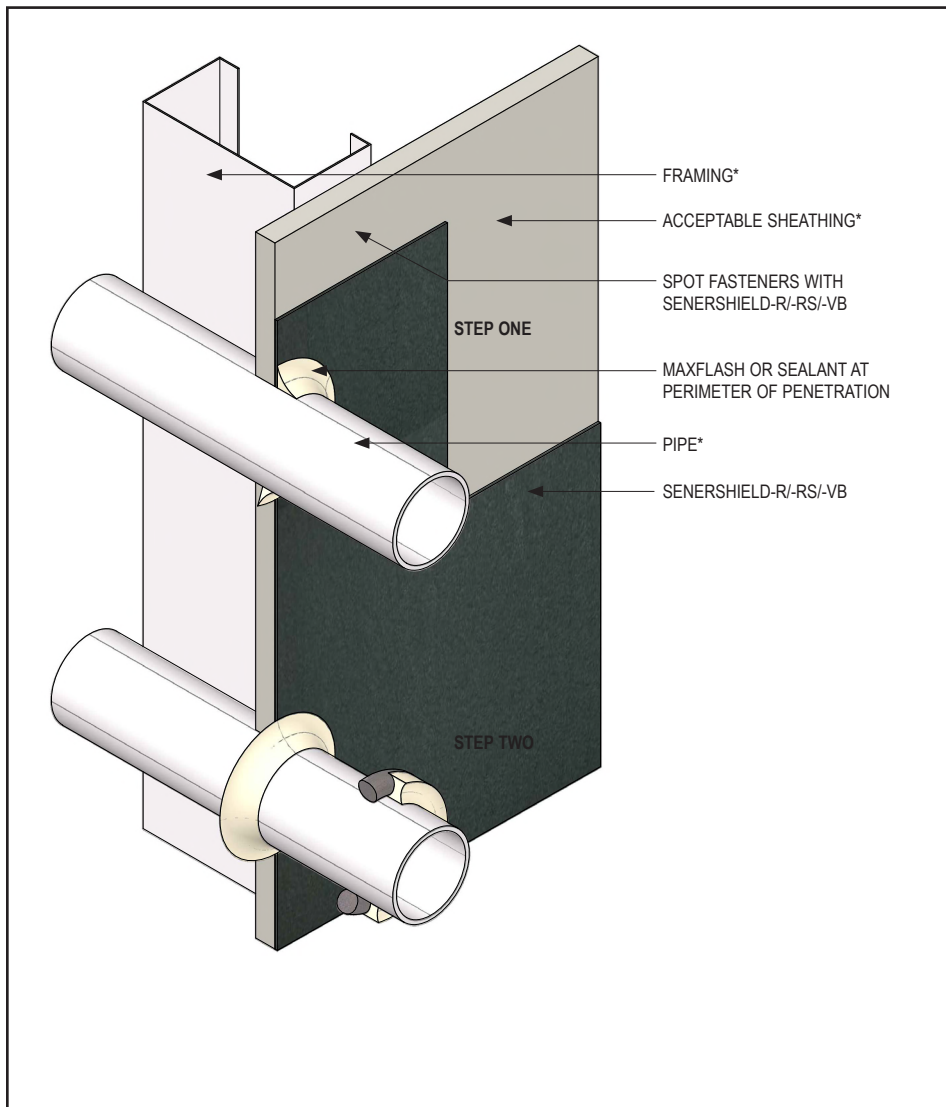
AWRB-08

2109

(\*NOTE: BY OTHERS)

This detail represents Master Builders Solutions Construction Systems US, LLC (hereinafter Master Builders Solutions) latest recommendations. It is presented in good faith by Master Builders Solutions. The detail is subject to change without notice. Master Builders Solutions accepts no liability for the end use of the detail. For conditions not shown, consult Master Builders Solutions for review of specific detail.

## Senershield-R/-RS/-VB TYPICAL PENETRATION THROUGH WALL CONSTRUCTION (WITH MAXFLASH OR SEALANT)



- Install Master Builders Solutions materials in accordance with current installation instructions.
- Unsatisfactory conditions shall be reported to the General Contractor and corrected before the application of Master Builders Solutions products.
- Senershield-R/-RS/-VB with Sheathing Fabric may be used as an alternate to provide an air/water-resistive barrier around penetrations.
- Provide backer rod and MasterSeal NP 150 or equal between pipe and cladding (by others).

AWRB-09

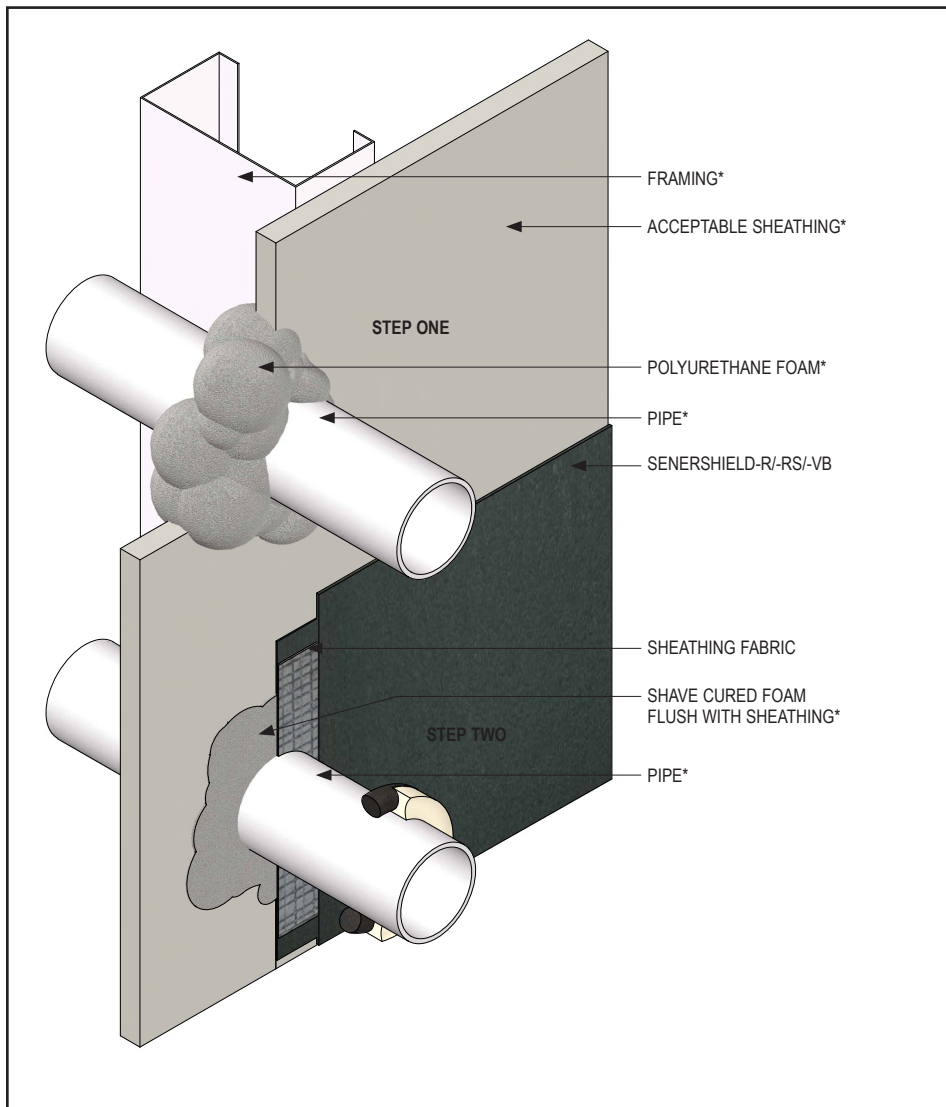
2109

(\*NOTE: BY OTHERS)

This detail represents Master Builders Solutions Construction Systems US, LLC (hereinafter Master Builders Solutions) latest recommendations. It is presented in good faith by Master Builders Solutions. The detail is subject to change without notice. Master Builders Solutions accepts no liability for the end use of the detail. For conditions not shown, consult Master Builders Solutions for review of specific detail.

## Senershield-R/-RS/-VB

### TYPICAL PENETRATION THROUGH WALL CONSTRUCTION (ROUGH CUT)



- Install Master Builders Solutions materials in accordance with current installation instructions.
- Unsatisfactory conditions shall be reported to the General Contractor and corrected before the application of Master Builders Solutions products.
- Ensure spray foam is low expansion.
- Provide backer rod and MasterSeal NP 150 or equal between pipe and cladding (by others).
- Embed Master Builders Solutions Sheathing Fabric in Senershield-R/-RS/-VB.

AWRB-10

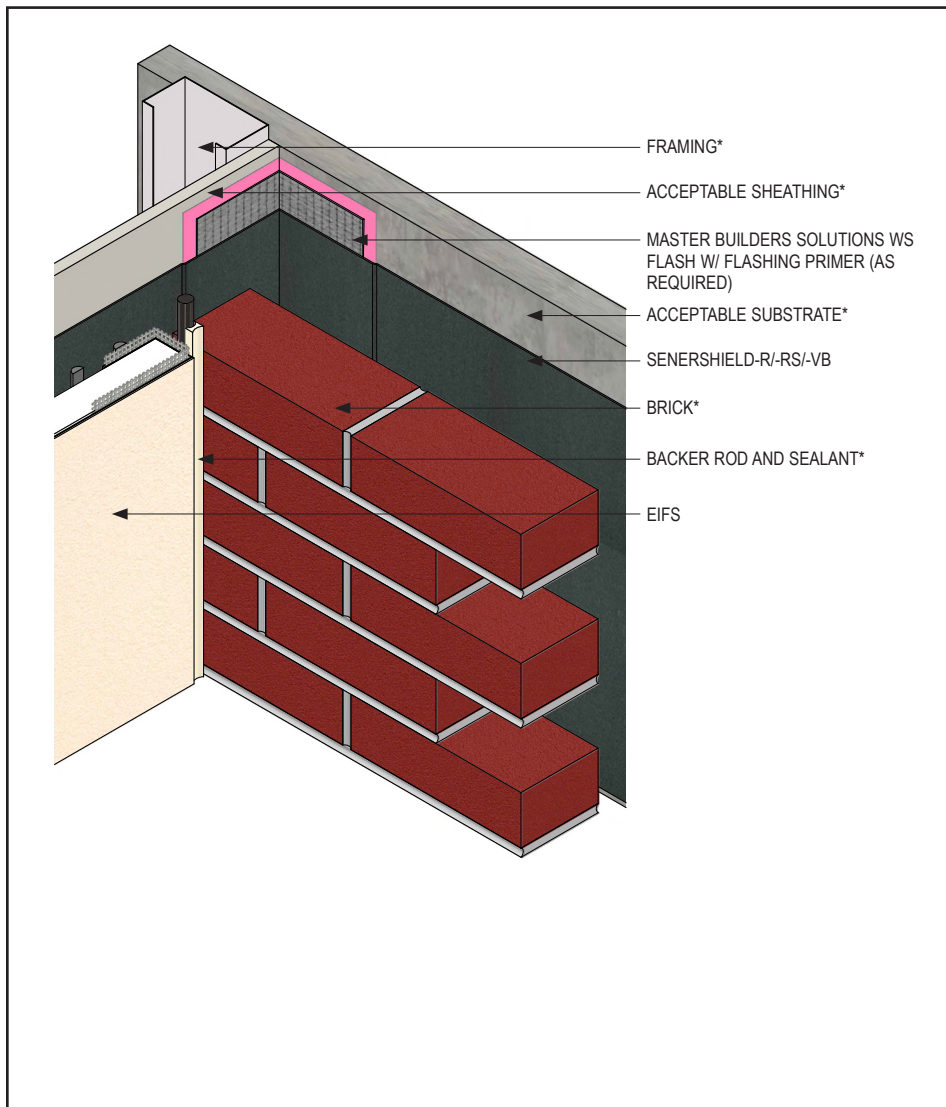
2109

(\*NOTE: BY OTHERS)

This detail represents Master Builders Solutions Construction Systems US, LLC (hereinafter Master Builders Solutions) latest recommendations. It is presented in good faith by Master Builders Solutions. The detail is subject to change without notice. Master Builders Solutions accepts no liability for the end use of the detail. For conditions not shown, consult Master Builders Solutions for review of specific detail.

## Senershield-R/-RS/-VB

### TYPICAL INSIDE CORNER CHANGE IN SUBSTRATE



- Install Master Builders Solutions materials in accordance with current installation instructions.
- Unsatisfactory conditions shall be reported to the General Contractor and corrected before the application of Master Builders Solutions products.
- Senershield-R/-RS/-VB and Master Builders Solutions sheathing fabric may be used as an alternate to provide an air/water-resistive barrier at transition.

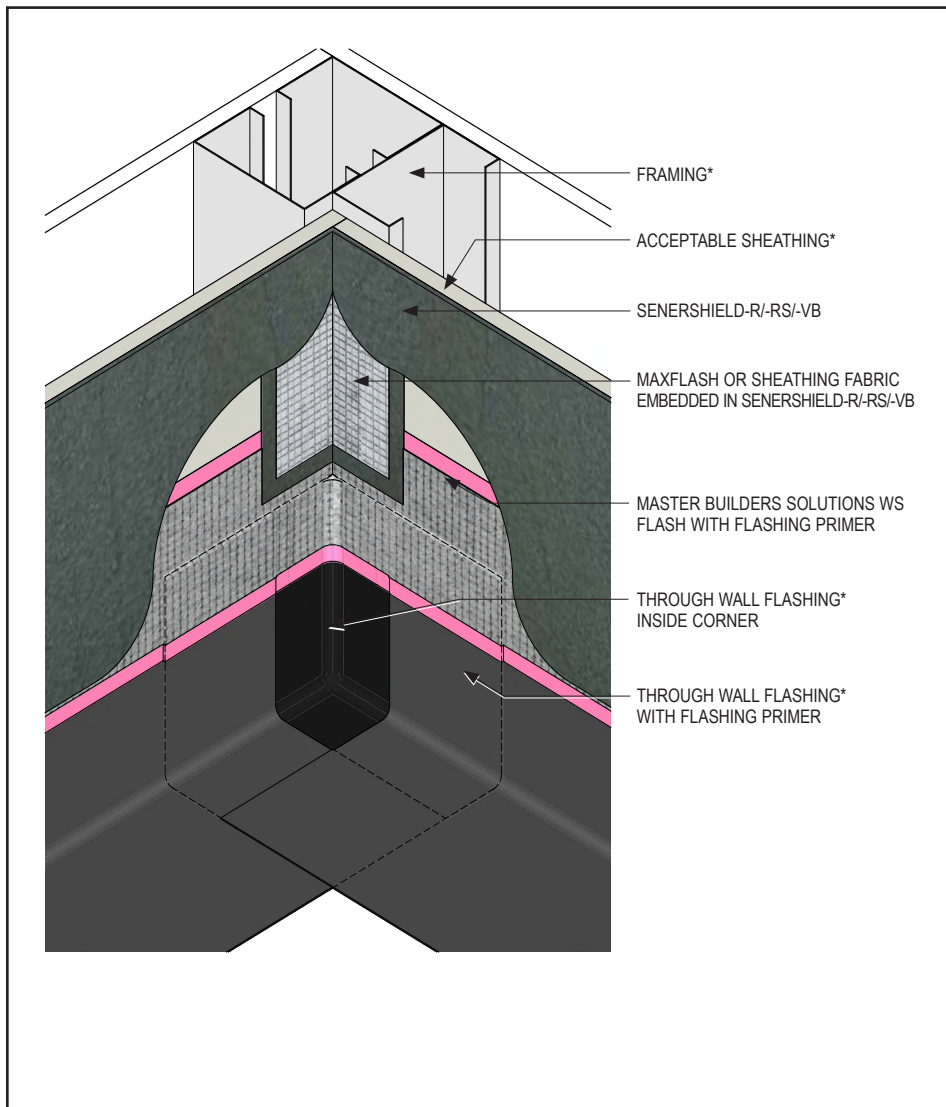
AWRB-11

2109

(\*NOTE: BY OTHERS)

This detail represents Master Builders Solutions Construction Systems US, LLC (hereinafter Master Builders Solutions) latest recommendations. It is presented in good faith by Master Builders Solutions. The detail is subject to change without notice. Master Builders Solutions accepts no liability for the end use of the detail. For conditions not shown, consult Master Builders Solutions for review of specific detail.

## Senershield-R/-RS/-VB TYPICAL INSIDE CORNER



- Install Master Builders Solutions materials in accordance with current installation instructions.
- Unsatisfactory conditions shall be reported to the General Contractor and corrected before the application of Master Builders Solutions products.
- Apply a bead of MasterSeal NP 150 sealant between Through Wall Flashing Membrane and Inside Corner to create an airtight and watertight seal.
- Center Master Builders Solutions WS Flash so half of the width covers Through Wall Flashing and half covers the CMU substrate.
- A termination bar and MasterSeal NP 150 sealant can be used instead of Master Builders Solutions WS Flash (See AWRB-18).
- Lap Sheathing Fabric a minimum of 2" over Master Builders Solutions WS Flash.
- If using a termination bar, Sheathing Fabric must be beneath Through Wall Flashing\* Membrane.

AWRB-12

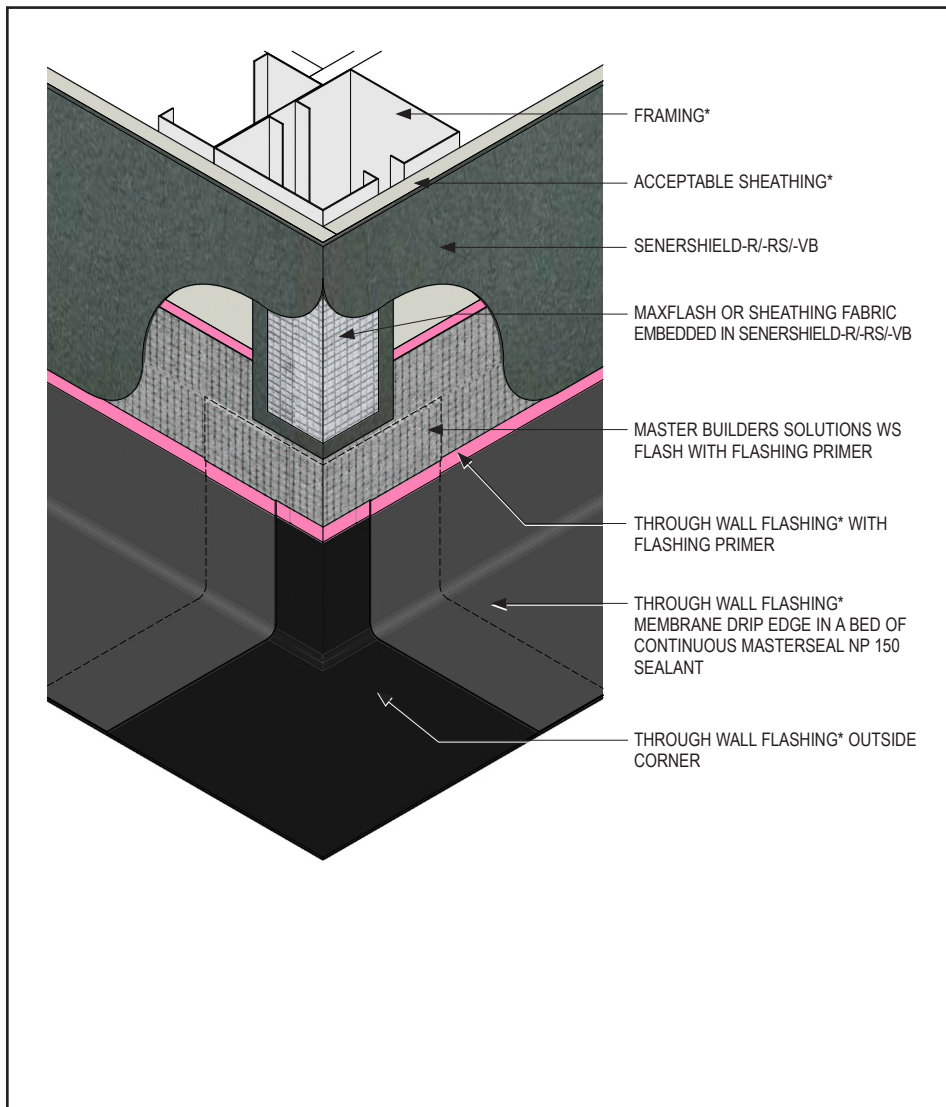
2109

(\*NOTE: BY OTHERS)

This detail represents Master Builders Solutions Construction Systems US, LLC (hereinafter Master Builders Solutions) latest recommendations. It is presented in good faith by Master Builders Solutions. The detail is subject to change without notice. Master Builders Solutions accepts no liability for the end use of the detail. For conditions not shown, consult Master Builders Solutions for review of specific detail.



## Senershield-R/-RS/-VB TYPICAL OUTSIDE CORNER



- Install Master Builders Solutions materials in accordance with current installation instructions.
- Unsatisfactory conditions shall be reported to the General Contractor and corrected before the application of Master Builders Solutions products.
- Apply a bead of MasterSeal NP 150 sealant between Through Wall Flashing\* and Outside Corner to create an airtight and watertight seal.
- Center Master Builders Solutions WS Flash so half of the width covers Through Wall Flashing\* and half covers the gypsum sheathing.
- If using a termination bar, Master Builders Solutions Sheathing Fabric must be beneath Through Wall Flashing\*.

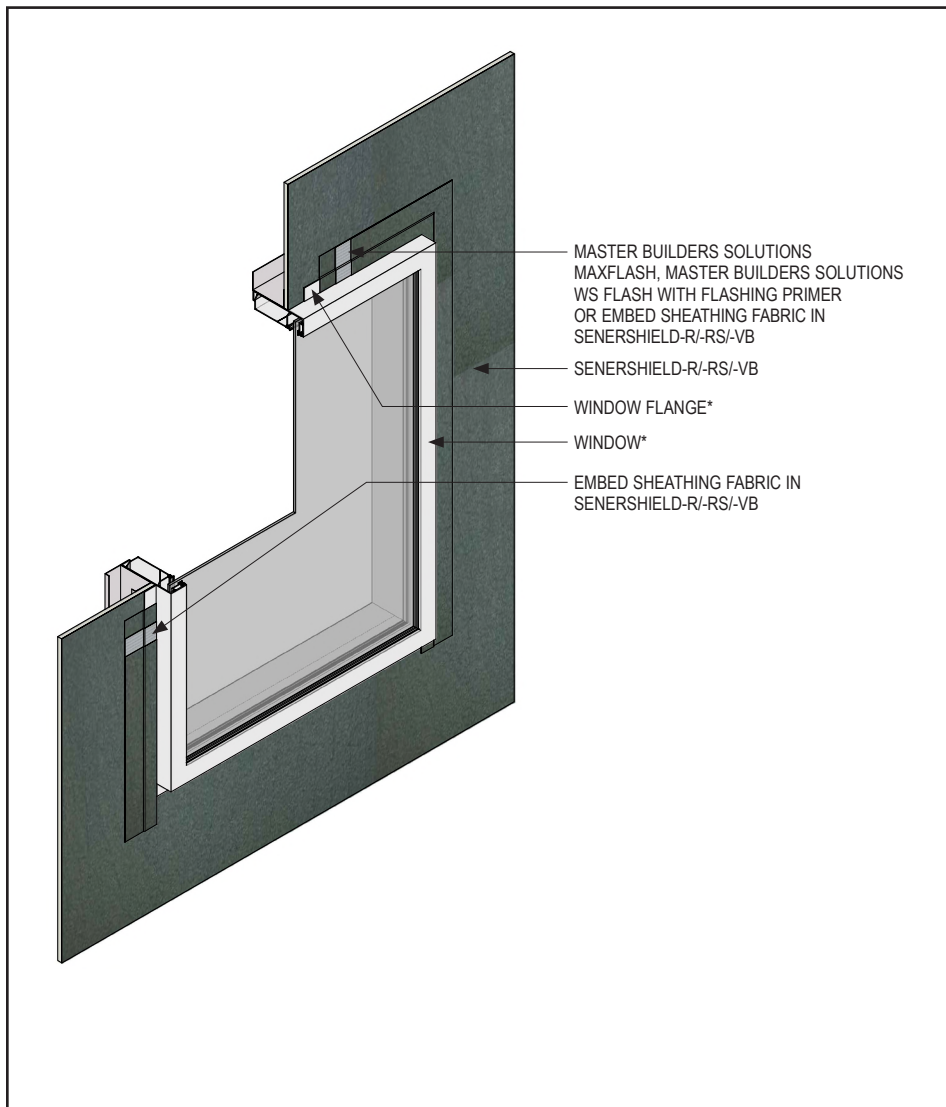
AWRB-13

2109

(\*NOTE: BY OTHERS)

This detail represents Master Builders Solutions Construction Systems US, LLC (hereinafter Master Builders Solutions) latest recommendations. It is presented in good faith by Master Builders Solutions. The detail is subject to change without notice. Master Builders Solutions accepts no liability for the end use of the detail. For conditions not shown, consult Master Builders Solutions for review of specific detail.

## Senershield-R/-RS/-VB TYPICAL WINDOW FLANGE TREATMENT



- Install Master Builders Solutions materials in accordance with current installation instructions.
- Unsatisfactory conditions shall be reported to the General Contractor and corrected before the application of Master Builders Solutions products.
- Verify rough opening is properly treated prior to window installation. See AWRB-26 or AWRB-31.
- Do not block drainage at window sill.
- Air seal to window by others.

AWRB-14

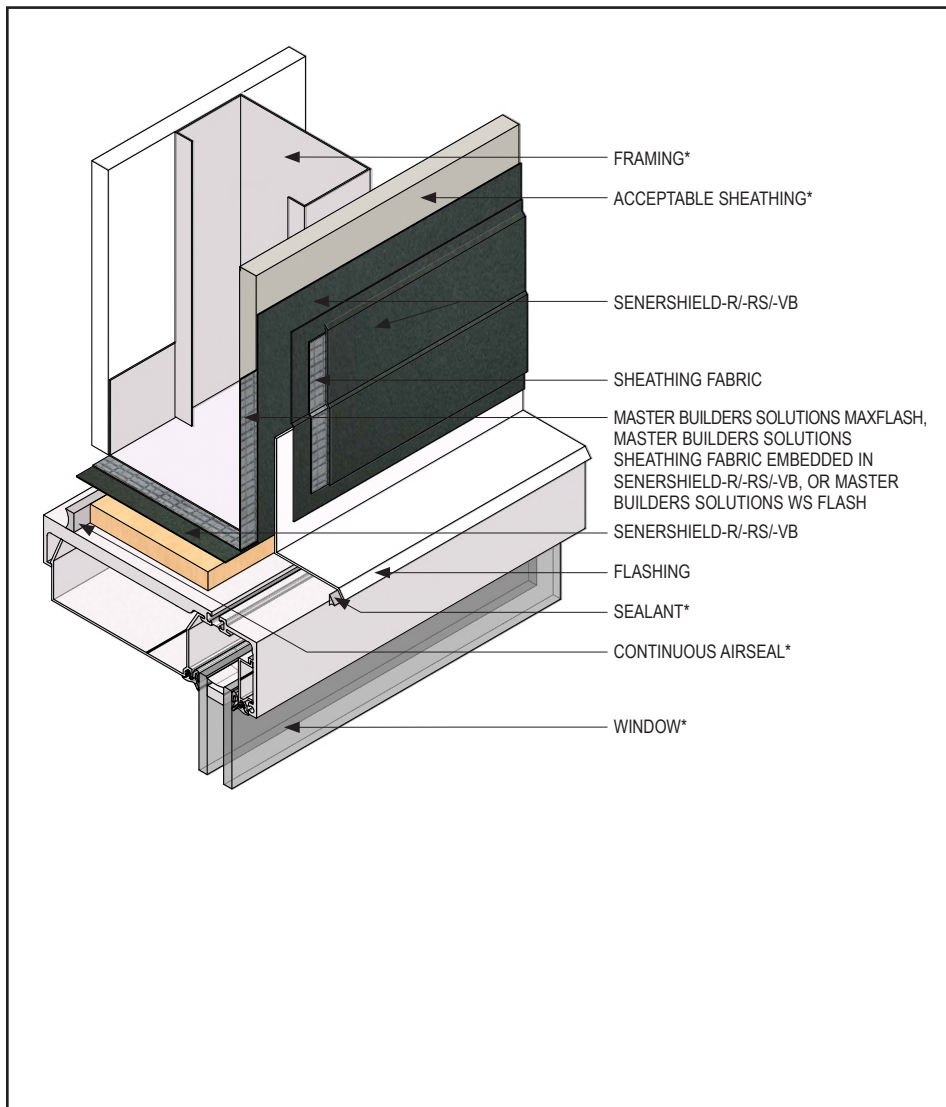
2109

(\*NOTE: BY OTHERS)

This detail represents Master Builders Solutions Construction Systems US, LLC (hereinafter Master Builders Solutions) latest recommendations. It is presented in good faith by Master Builders Solutions. The detail is subject to change without notice. Master Builders Solutions accepts no liability for the end use of the detail. For conditions not shown, consult Master Builders Solutions for review of specific detail.

## Senershield-R/-RS/-VB

### TYPICAL WINDOW HEAD



- Install Master Builders Solutions materials in accordance with current installation instructions.
- Unsatisfactory conditions shall be reported to the General Contractor and corrected before the application of Master Builders Solutions products.
- Provide end dams at flashing terminations.
- If blocking is installed prior to Senershield-R/-RS/-VB application, it shall be treated as a rough opening; verify adhesion before proceeding.
- Embed Master Builders Solutions Sheathing Fabric in Senershield-R/-RS/-VB.
- Embed Master Builders Solutions Sheathing Fabric in Senershield-R/-RS/-VB, apply Master Builders Solutions WS Flash over Master Builders Solutions Flashing Primer, or MaxFlash at rough opening.

AWRB-15

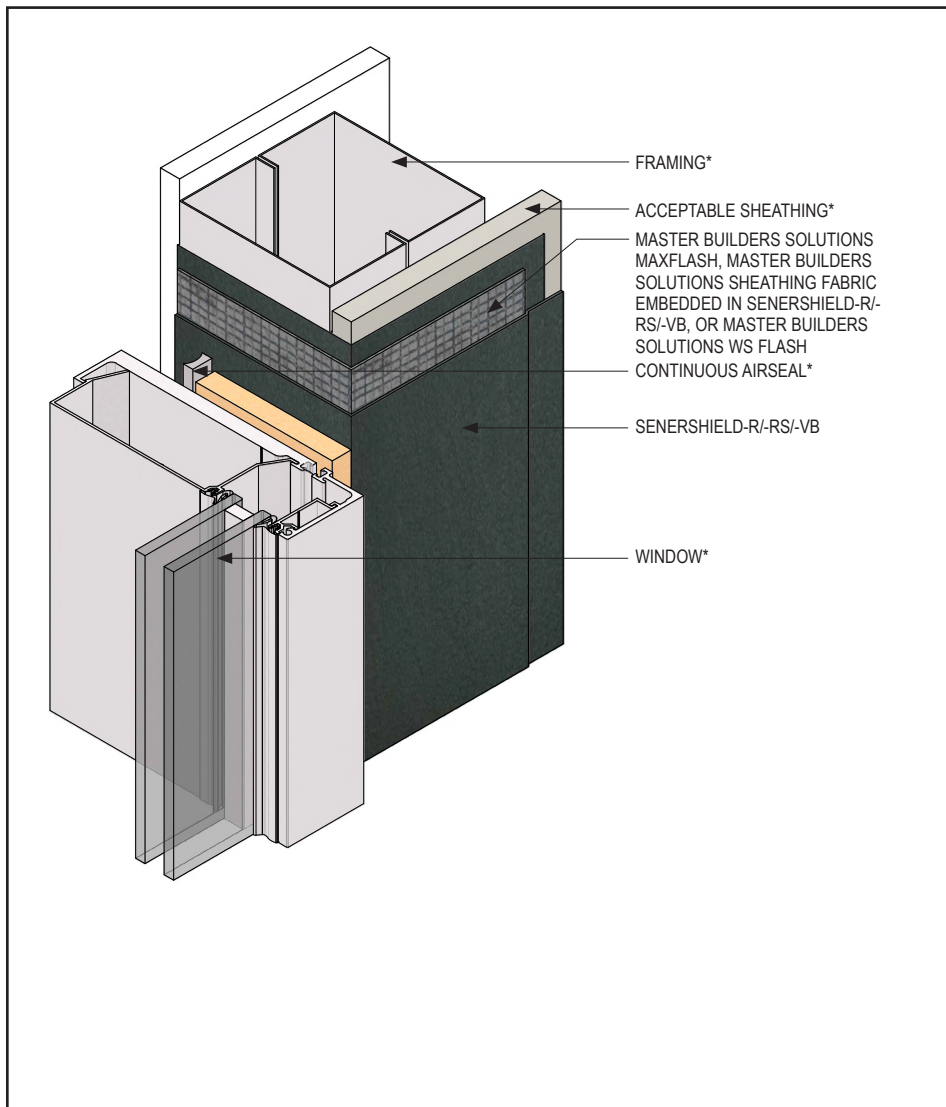
2109

(\*NOTE: BY OTHERS)

This detail represents Master Builders Solutions Construction Systems US, LLC (hereinafter Master Builders Solutions) latest recommendations. It is presented in good faith by Master Builders Solutions. The detail is subject to change without notice. Master Builders Solutions accepts no liability for the end use of the detail. For conditions not shown, consult Master Builders Solutions for review of specific detail.

## Senershield-R/-RS/-VB

### TYPICAL WINDOW JAMB



- Install Master Builders Solutions materials in accordance with current installation instructions.
- Unsatisfactory conditions shall be reported to the General Contractor and corrected before the application of Master Builders Solutions products.
- Apply Master Builders Solutions WS Flash over punched MaxFlash with 202 S/A mesh stud openings.
- If blocking is installed prior to Senershield-R/-RS/-VB application, it shall be treated as a rough opening; verify adhesion before proceeding.
- Embed Master Builders Solutions Sheathing Fabric in Senershield-R/-RS/-VB, apply Master Builders Solutions WS Flash over Master Builders Solutions Flashing Primer, or MaxFlash at rough opening.
- See AWRB-26 or AWRB-31.

AWRB-16

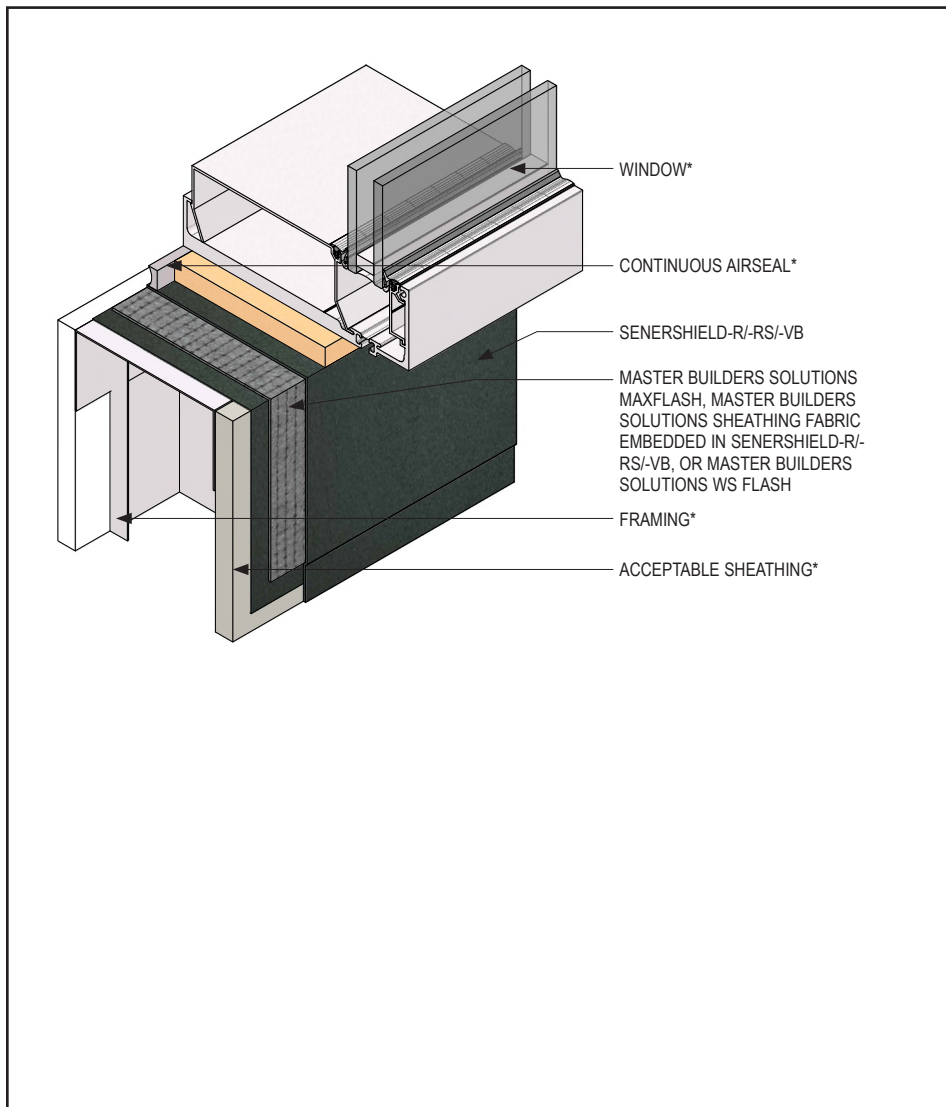
2109

(\*NOTE: BY OTHERS)

This detail represents Master Builders Solutions Construction Systems US, LLC (hereinafter Master Builders Solutions) latest recommendations. It is presented in good faith by Master Builders Solutions. The detail is subject to change without notice. Master Builders Solutions accepts no liability for the end use of the detail. For conditions not shown, consult Master Builders Solutions for review of specific detail.

## Senershield-R/-RS/-VB

### TYPICAL WINDOW SILL



- Install Master Builders Solutions materials in accordance with current installation instructions.
- Unsatisfactory conditions shall be reported to the General Contractor and corrected before the application of Master Builders Solutions products.
- Install end/back dams as required.
- If blocking is installed prior to Senershield-R/-RS/-VB application, it shall be treated as a rough opening; verify adhesion before proceeding.
- If pan flashing is required, see detail AWRB-11.
- Embed Master Builders Solutions Sheathing Fabric in Senershield-R/-RS/-VB, apply Master Builders Solutions WS Flash over Master Builders Solutions Flashing Primer, or MaxFlash at rough opening.

AWRB-17

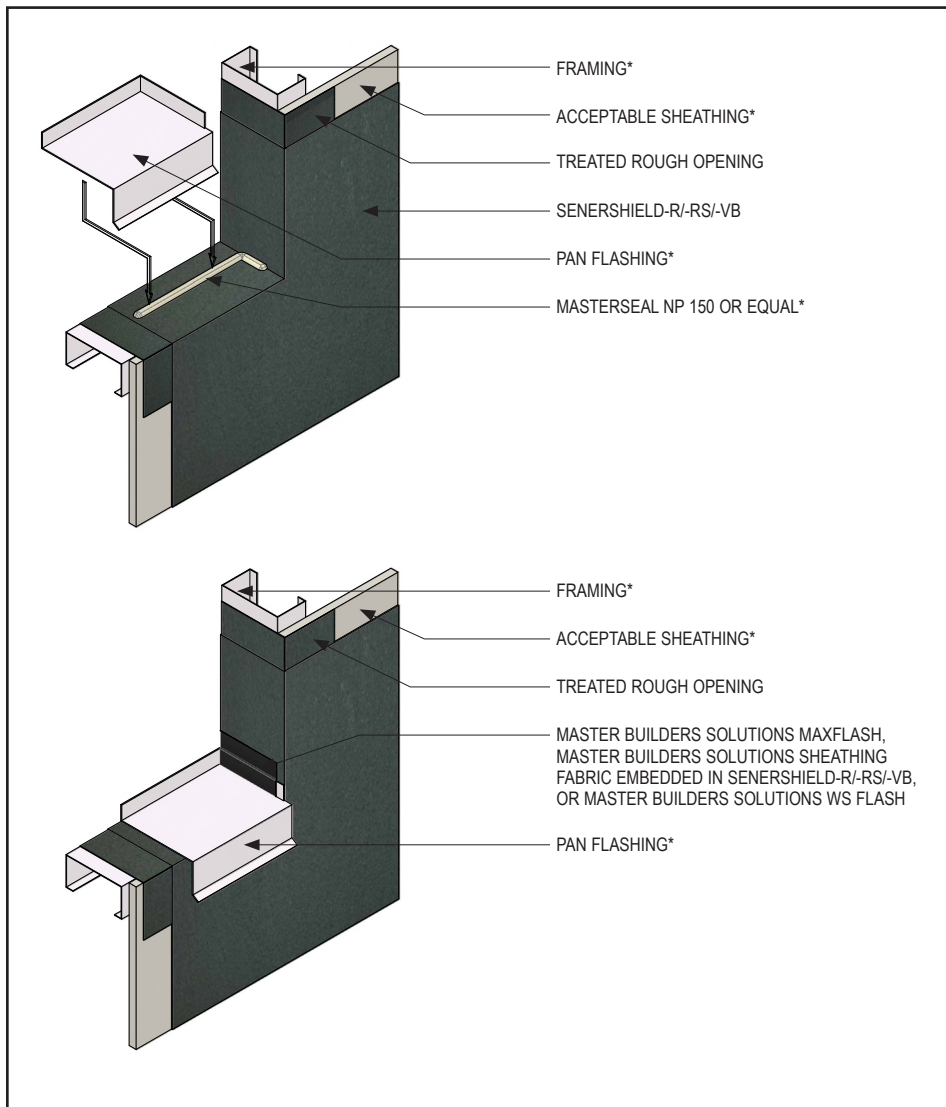
2109

(\*NOTE: BY OTHERS)

This detail represents Master Builders Solutions Construction Systems US, LLC (hereinafter Master Builders Solutions) latest recommendations. It is presented in good faith by Master Builders Solutions. The detail is subject to change without notice. Master Builders Solutions accepts no liability for the end use of the detail. For conditions not shown, consult Master Builders Solutions for review of specific detail.

## Senershield-R/-RS/-VB

### TYPICAL PAN FLASHING



AWRB-18

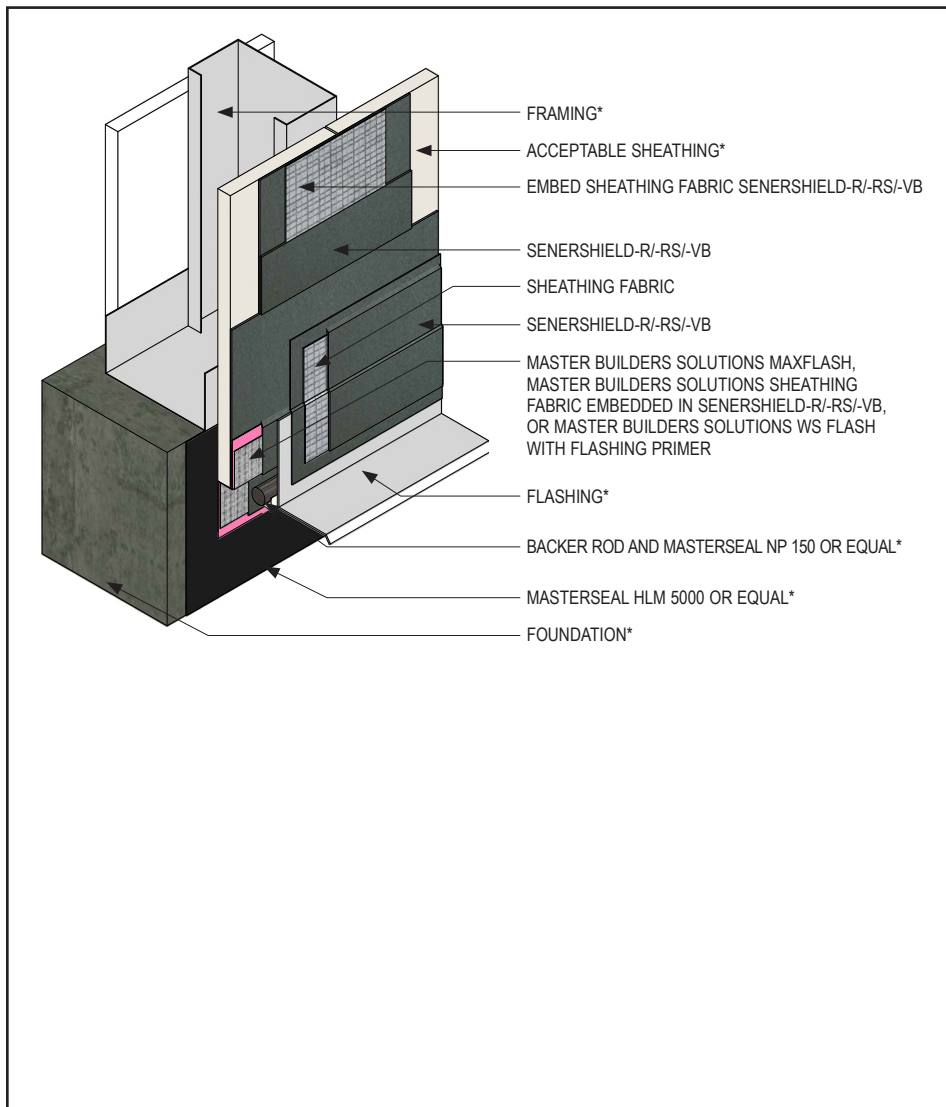
2109

(\*NOTE: BY OTHERS)

- Install Master Builders Solutions materials in accordance with current installation instructions.
- Unsatisfactory conditions shall be reported to the General Contractor and corrected before the application of Master Builders Solutions products.
- Wrap rough opening in accordance with AWRB-26 or AWRB-31.
- Install MasterSeal NP 150 or equal as depicted onto the sill and jamb to maintain continuity of the air barrier.
- Install pan flashing into the wet sealant. Remove excess sealant as required.
- Install Master Builders Solutions Sheathing Fabric into wet Senershield-R/-RS/-VB at the jamb end dams.

This detail represents Master Builders Solutions Construction Systems US, LLC (hereinafter Master Builders Solutions) latest recommendations. It is presented in good faith by Master Builders Solutions. The detail is subject to change without notice. Master Builders Solutions accepts no liability for the end use of the detail. For conditions not shown, consult Master Builders Solutions for review of specific detail.

## Senershield-R/-RS/-VB TYPICAL TERMINATION AT GRADE – SHEATHING OVERLAPPING FOUNDATION



- Install Master Builders Solutions materials in accordance with current installation instructions.
- Unsatisfactory conditions shall be reported to the General Contractor and corrected before the application of Master Builders Solutions products.
- Ensure Senershield-R/-RS/-VB fully covers MaxFlash at overlap.
- Extend flashing over coated MaxFlash on foundation.
- MaxFlash is used at foundation transition. Apply at 20–30 mils.

AWRB-19

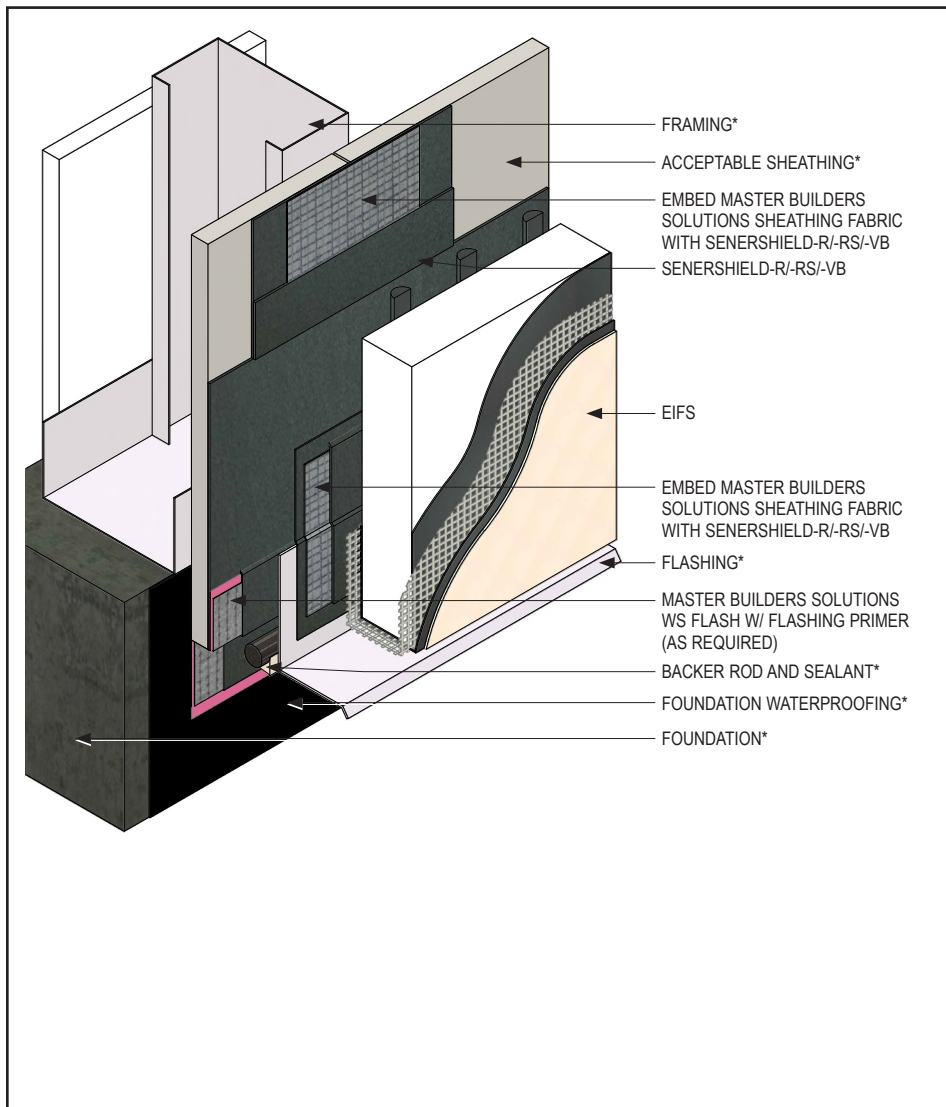
2109

(\*NOTE: BY OTHERS)

This detail represents Master Builders Solutions Construction Systems US, LLC (hereinafter Master Builders Solutions) latest recommendations. It is presented in good faith by Master Builders Solutions. The detail is subject to change without notice. Master Builders Solutions accepts no liability for the end use of the detail. For conditions not shown, consult Master Builders Solutions for review of specific detail.

## Senershield-R/-RS/-VB

### TYPICAL TERMINATION AT GRADE – SHEATHING OVERLAPPING FOUNDATION WITH EIFS



- Install Master Builders Solutions materials in accordance with current installation instructions.
- Unsatisfactory conditions shall be reported to the General Contractor and corrected before the application of Master Builders Solutions products.
- Ensure Senershield-R/-RS/-VB fully covers Master Builders Solutions WS Flash at overlap.
- Extend flashing over coated Master Builders Solutions WS Flash on foundation.

AWRB-20

2109

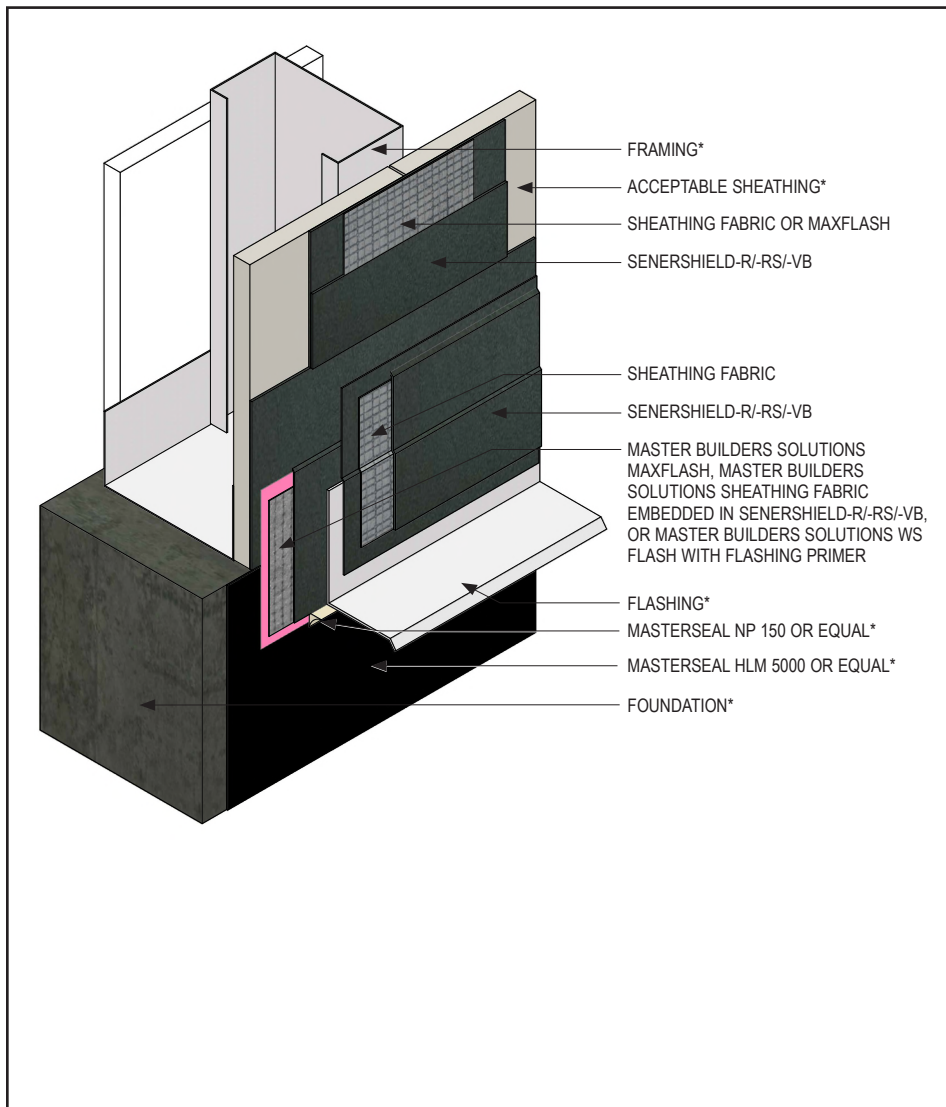
(\*NOTE: BY OTHERS)

This detail represents Master Builders Solutions Construction Systems US, LLC (hereinafter Master Builders Solutions) latest recommendations. It is presented in good faith by Master Builders Solutions. The detail is subject to change without notice. Master Builders Solutions accepts no liability for the end use of the detail. For conditions not shown, consult Master Builders Solutions for review of specific detail.



## Senershield-R/-RS/-VB

### TYPICAL TERMINATION AT GRADE – SHEATHING FLUSH WITH FOUNDATION



- Install Master Builders Solutions materials in accordance with current installation instructions.
- Unsatisfactory conditions shall be reported to the General Contractor and corrected before the application of Master Builders Solutions products.
- Ensure Senershield-R/-RS/-VB fully covers Master Builders Solutions WS Flash at overlap.
- Extend flashing over coated Master Builders Solutions WS Flash on foundation.
- Embed Master Builders Solutions MaxFlash or Master Builders Solutions Sheathing Fabric in Senershield-R/-RS/-VB.

AWRB-21

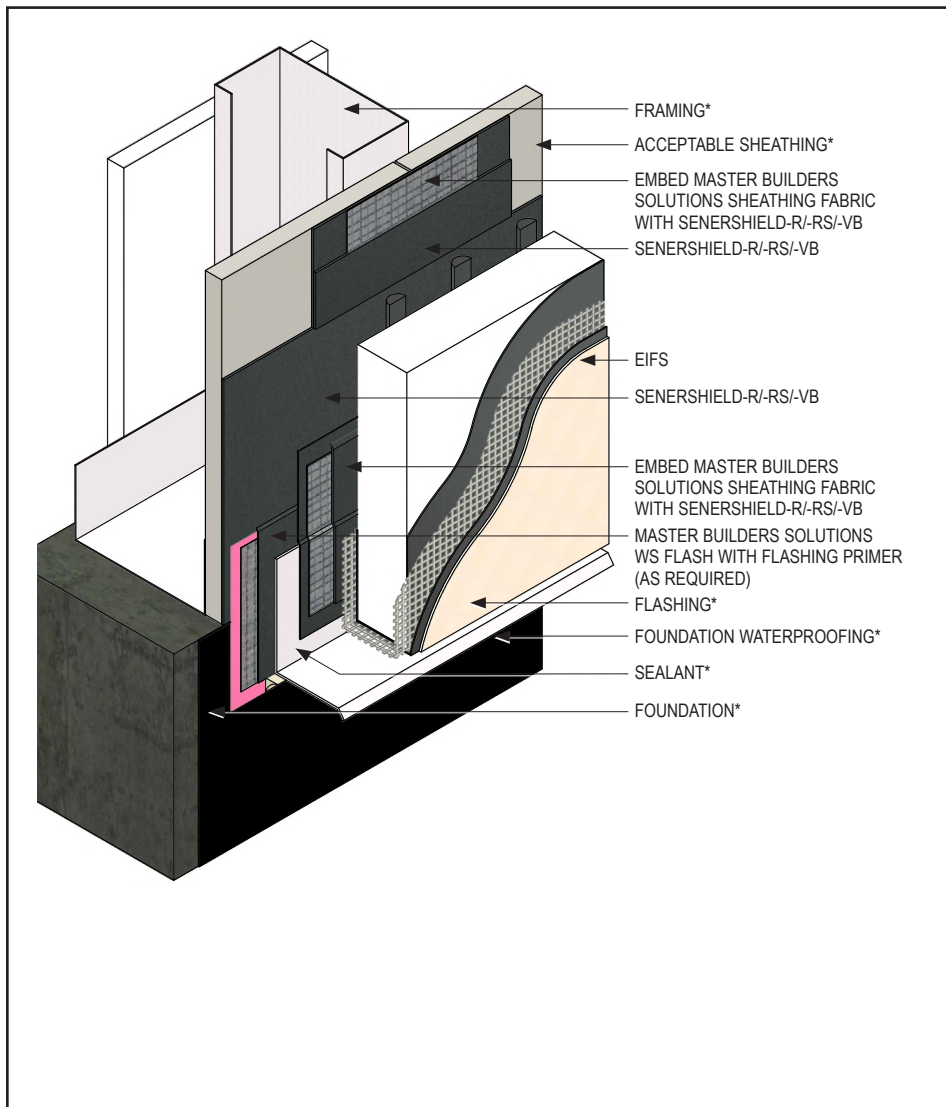
2109

(\*NOTE: BY OTHERS)

This detail represents Master Builders Solutions Construction Systems US, LLC (hereinafter Master Builders Solutions) latest recommendations. It is presented in good faith by Master Builders Solutions. The detail is subject to change without notice. Master Builders Solutions accepts no liability for the end use of the detail. For conditions not shown, consult Master Builders Solutions for review of specific detail.

## Senershield-R/-RS/-VB

### TYPICAL TERMINATION AT GRADE – SHEATHING FLUSH WITH FOUNDATION AND EIFS



- Install Master Builders Solutions materials in accordance with current installation instructions.
- Unsatisfactory conditions shall be reported to the General Contractor and corrected before the application of Master Builders Solutions products.
- Install Master Builders Solutions materials in accordance with current installation instructions.
- Ensure Senershield-R/-RS/-VB fully covers Master Builders Solutions WS Flash at overlap.
- Extend flashing over coated Master Builders Solutions WS Flash on foundation.

AWRB-22

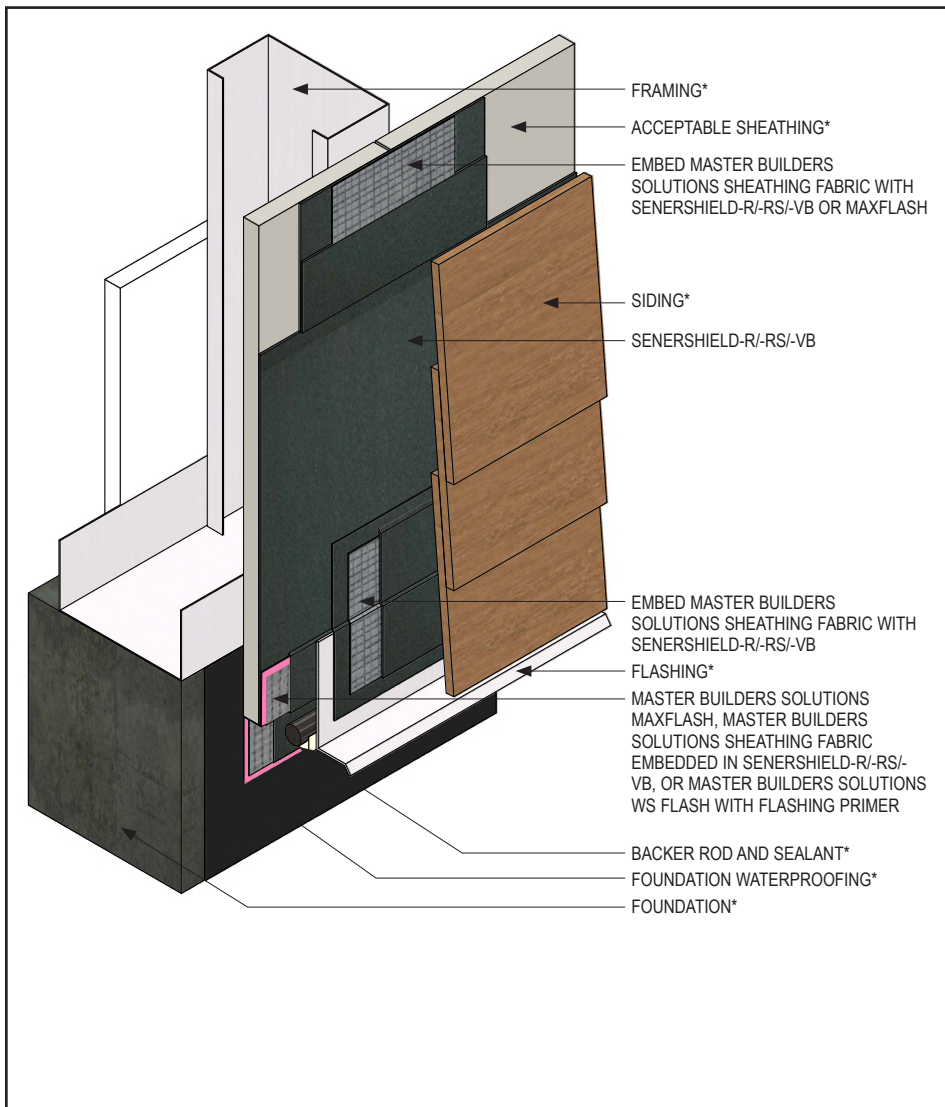
2109

(\*NOTE: BY OTHERS)

This detail represents Master Builders Solutions Construction Systems US, LLC (hereinafter Master Builders Solutions) latest recommendations. It is presented in good faith by Master Builders Solutions. The detail is subject to change without notice. Master Builders Solutions accepts no liability for the end use of the detail. For conditions not shown, consult Master Builders Solutions for review of specific detail.

## Senershield-R/-RS/-VB

### TYPICAL TERMINATION AT GRADE – SHEATHING OVERLAPPING FOUNDATION WITH SIDING



- Install Master Builders Solutions materials in accordance with current installation instructions.
- Unsatisfactory conditions shall be reported to the General Contractor and corrected before the application of Master Builders Solutions products.
- Install Master Builders Solutions materials in accordance with current installation instructions.
- Ensure Senershield-R/-RS/-VB fully covers Master Builders Solutions WS Flash at overlap.
- Extend flashing over coated Master Builders Solutions WS Flash on foundation.
- Contact siding manufacturer for installation instructions.

AWRB-23

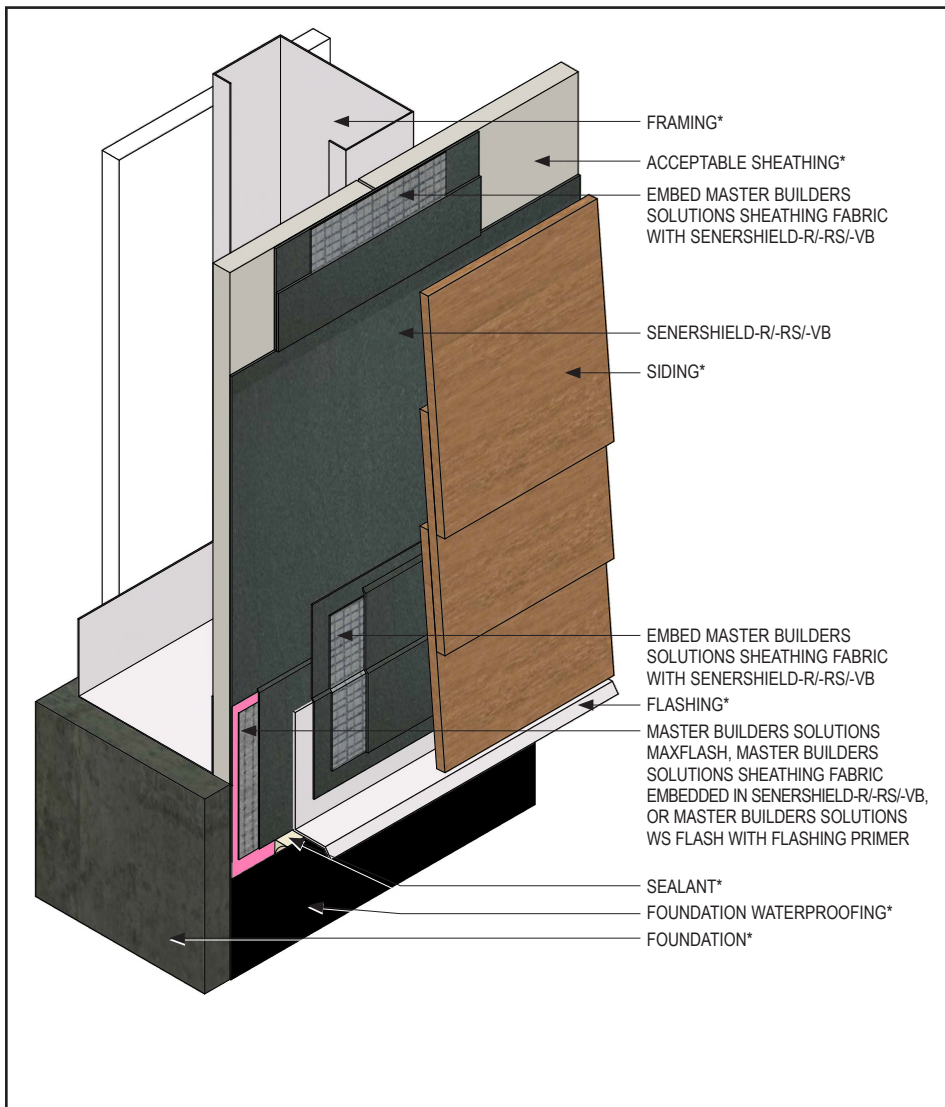
2109

(\*NOTE: BY OTHERS)

This detail represents Master Builders Solutions Construction Systems US, LLC (hereinafter Master Builders Solutions) latest recommendations. It is presented in good faith by Master Builders Solutions. The detail is subject to change without notice. Master Builders Solutions accepts no liability for the end use of the detail. For conditions not shown, consult Master Builders Solutions for review of specific detail.

## Senershield-R/-RS/-VB

### TYPICAL TERMINATION AT GRADE – SHEATHING FLUSH WITH FOUNDATION AND SIDING



- Install Master Builders Solutions materials in accordance with current installation instructions.
- Unsatisfactory conditions shall be reported to the General Contractor and corrected before the application of Master Builders Solutions products.
- Ensure Senershield-R/-RS/-VB fully covers Master Builders Solutions WS Flash at overlap.
- Extend flashing over coated Master Builders Solutions WS Flash on foundation.
- Contact siding manufacturer for installation instructions.

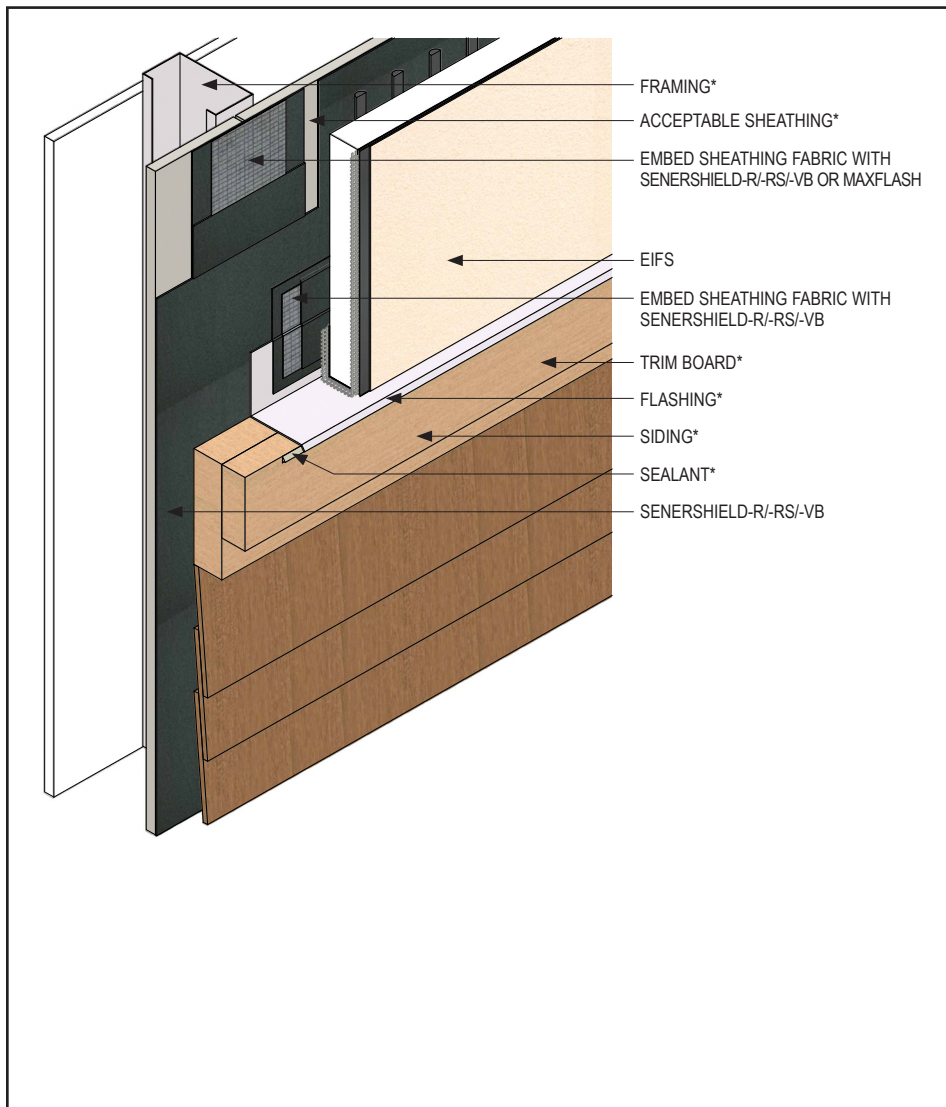
AWRB-24

2109

(\*NOTE: BY OTHERS)

This detail represents Master Builders Solutions Construction Systems US, LLC (hereinafter Master Builders Solutions) latest recommendations. It is presented in good faith by Master Builders Solutions. The detail is subject to change without notice. Master Builders Solutions accepts no liability for the end use of the detail. For conditions not shown, consult Master Builders Solutions for review of specific detail.

## Senershield-R/-RS/-VB TYPICAL EIFS ABUTMENT TO SIDING



- Install Master Builders Solutions materials in accordance with current installation instructions.
- Unsatisfactory conditions shall be reported to the General Contractor and corrected before the application of Master Builders Solutions products.

AWRB-25

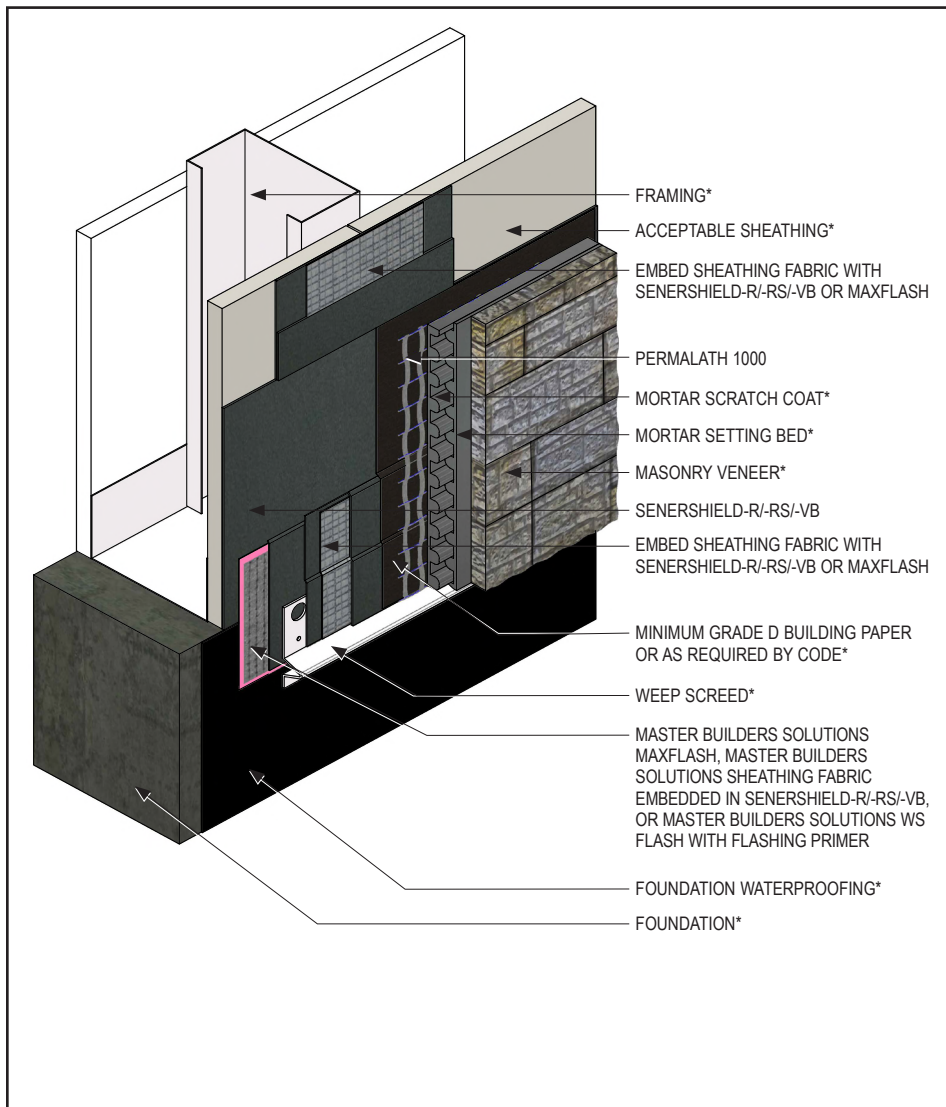
2109

(\*NOTE: BY OTHERS)

This detail represents Master Builders Solutions Construction Systems US, LLC (hereinafter Master Builders Solutions) latest recommendations. It is presented in good faith by Master Builders Solutions. The detail is subject to change without notice. Master Builders Solutions accepts no liability for the end use of the detail. For conditions not shown, consult Master Builders Solutions for review of specific detail.

## Senershield-R/-RS/-VB

### TYPICAL TERMINATION AT GRADE – MASONRY VENEER



- Install Master Builders Solutions materials in accordance with current installation instructions.
- Unsatisfactory conditions shall be reported to the General Contractor and corrected before the application of Master Builders Solutions products.
- Install Master Builders Solutions materials in accordance with current installation instructions.
- Ensure Senershield-R/-RS/-VB fully covers Master Builders Solutions WS Flash at overlap.

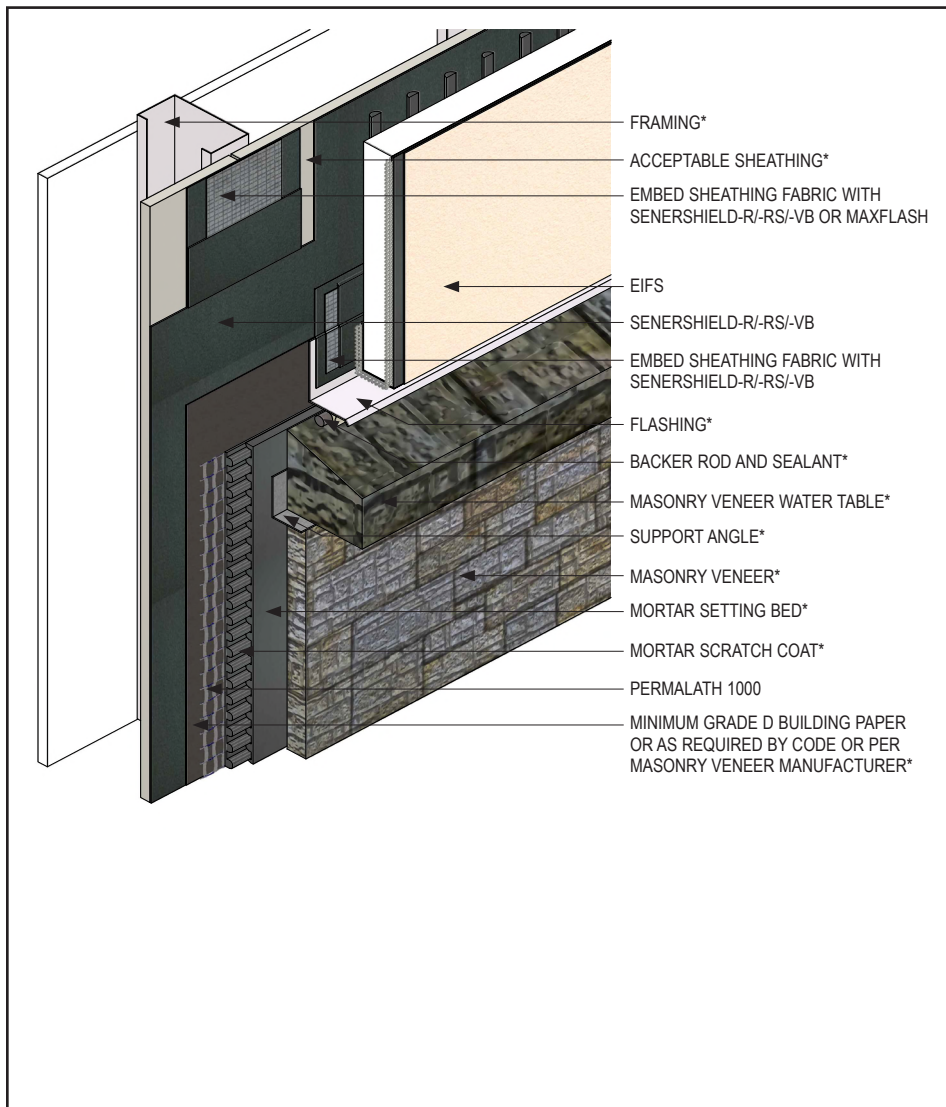
AWRB-26

2109

(\*NOTE: BY OTHERS)

This detail represents Master Builders Solutions Construction Systems US, LLC (hereinafter Master Builders Solutions) latest recommendations. It is presented in good faith by Master Builders Solutions. The detail is subject to change without notice. Master Builders Solutions accepts no liability for the end use of the detail. For conditions not shown, consult Master Builders Solutions for review of specific detail.

## Senershield-R/-RS/-VB TYPICAL EIFS ABUTMENT TO MASONRY VENEER



- Install Master Builders Solutions materials in accordance with current installation instructions.
- Unsatisfactory conditions shall be reported to the General Contractor and corrected before the application of Master Builders Solutions products.

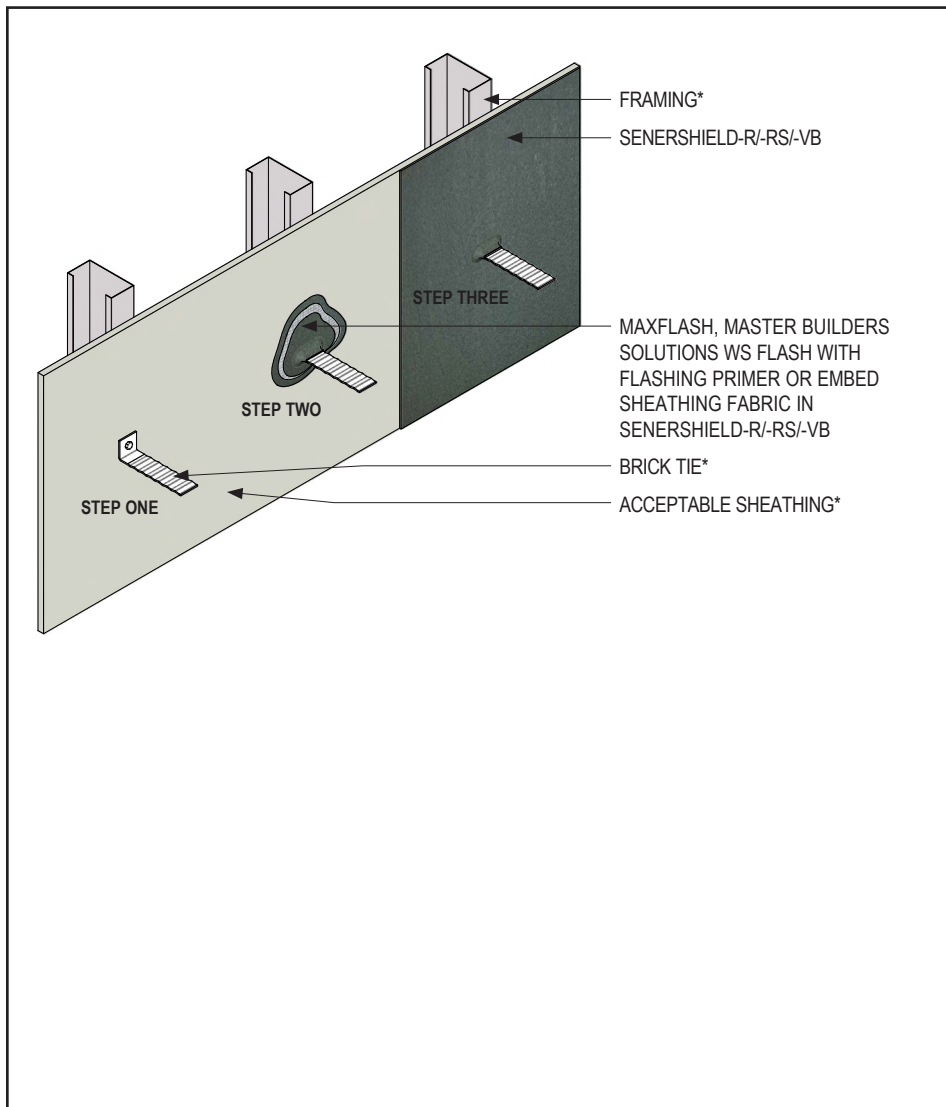
AWRB-27

2109

(\*NOTE: BY OTHERS)

This detail represents Master Builders Solutions Construction Systems US, LLC (hereinafter Master Builders Solutions) latest recommendations. It is presented in good faith by Master Builders Solutions. The detail is subject to change without notice. Master Builders Solutions accepts no liability for the end use of the detail. For conditions not shown, consult Master Builders Solutions for review of specific detail.

## Senershield-R/-RS/-VB TYPICAL BRICK ANCHOR (INSTALLED PRIOR TO AWRB APPLICATION)



- Install Master Builders Solutions materials in accordance with current installation instructions.
- Unsatisfactory conditions shall be reported to the General Contractor and corrected before the application of Master Builders Solutions products.
- Seal brick tie with MaxFlash, embedding Master Builders Solutions Sheathing Fabric in Senershield-R/-RS/-VB, or Master Builders Solutions WS Flash with Flashing Primer.
- Consult the brick tie manufacturer for proper attachment.

AWRB-28

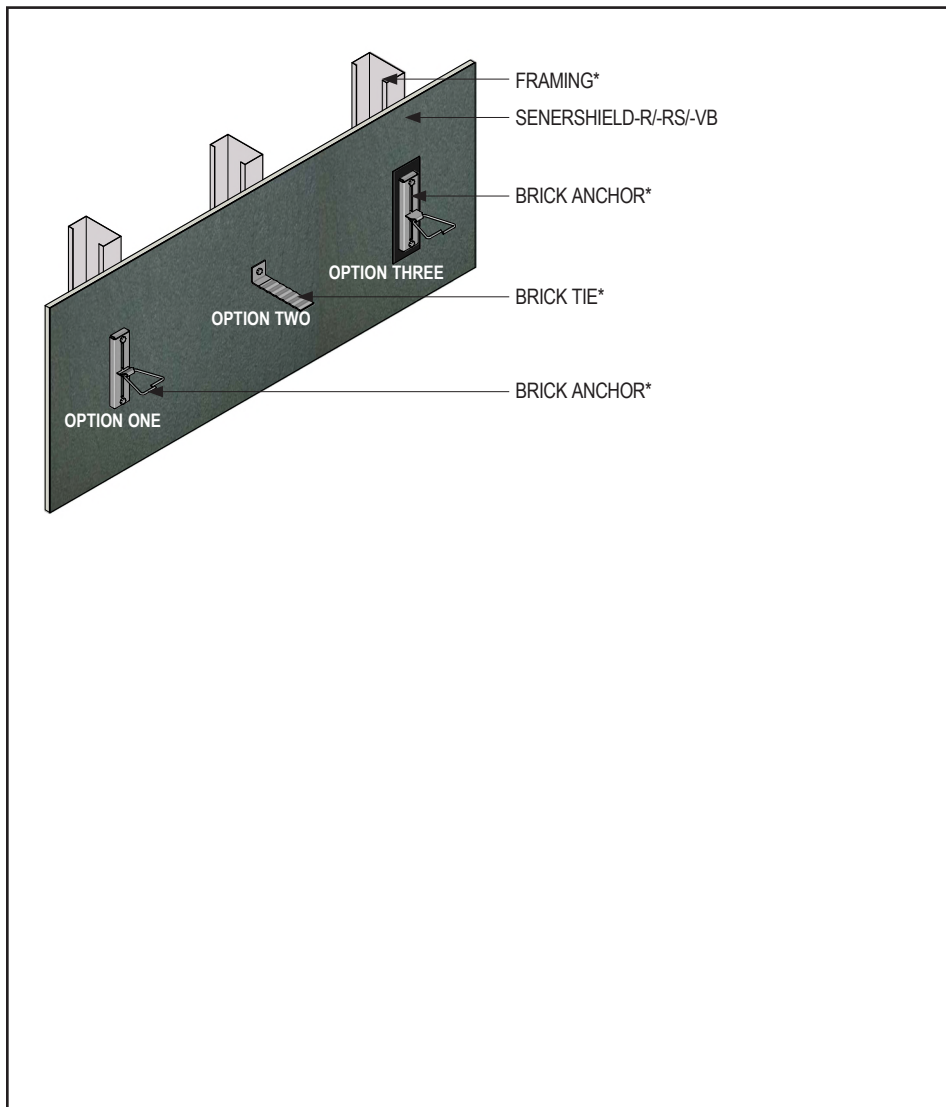
2109

(\*NOTE: BY OTHERS)

This detail represents Master Builders Solutions Construction Systems US, LLC (hereinafter Master Builders Solutions) latest recommendations. It is presented in good faith by Master Builders Solutions. The detail is subject to change without notice. Master Builders Solutions accepts no liability for the end use of the detail. For conditions not shown, consult Master Builders Solutions for review of specific detail.



## Senershield-R/-RS/-VB TYPICAL BRICK ANCHOR (INSTALLED AFTER AWRB APPLICATION)



- Install Master Builders Solutions materials in accordance with current installation instructions.
- Unsatisfactory conditions shall be reported to the General Contractor and corrected before the application of Master Builders Solutions products.
- For more information, see *Senershield Fastener Self-Sealing* technical bulletin.
- Consult the brick anchor manufacturer for proper attachment.
- Additional Senershield-R/-RS/-VB, MaxFlash or sealant may be post applied at anchor points.
- Option 3: Apply Master Builders Solutions WS Flash to Senershield-R/-RS/-VB prior to application of brick anchor.

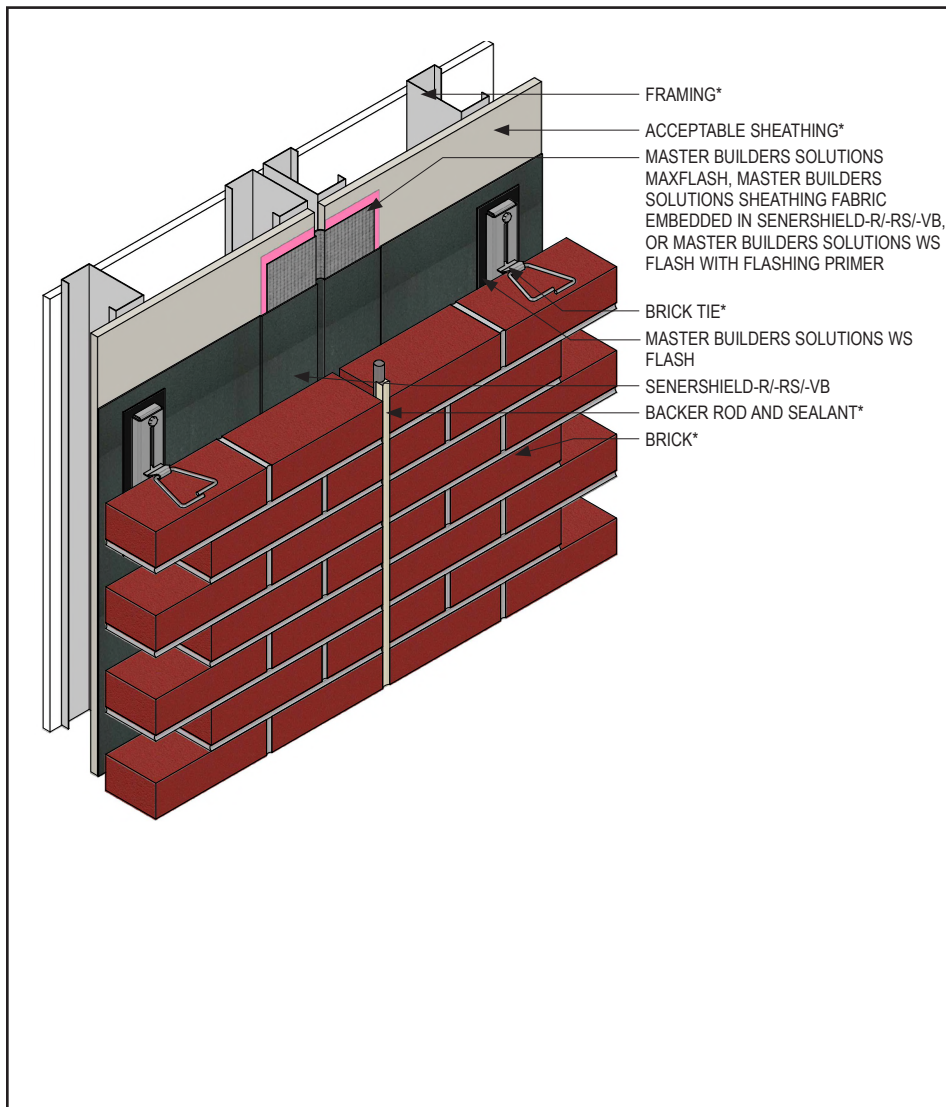
AWRB-29

2109

(\*NOTE: BY OTHERS)

This detail represents Master Builders Solutions Construction Systems US, LLC (hereinafter Master Builders Solutions) latest recommendations. It is presented in good faith by Master Builders Solutions. The detail is subject to change without notice. Master Builders Solutions accepts no liability for the end use of the detail. For conditions not shown, consult Master Builders Solutions for review of specific detail.

## Senershield-R/-RS/-VB TYPICAL BRICK EXPANSION JOINT



- Install Master Builders Solutions materials in accordance with current installation instructions.
- Unsatisfactory conditions shall be reported to the General Contractor and corrected before the application of Master Builders Solutions products.
- See detail AWRB-21 for typical brick anchor treatment.

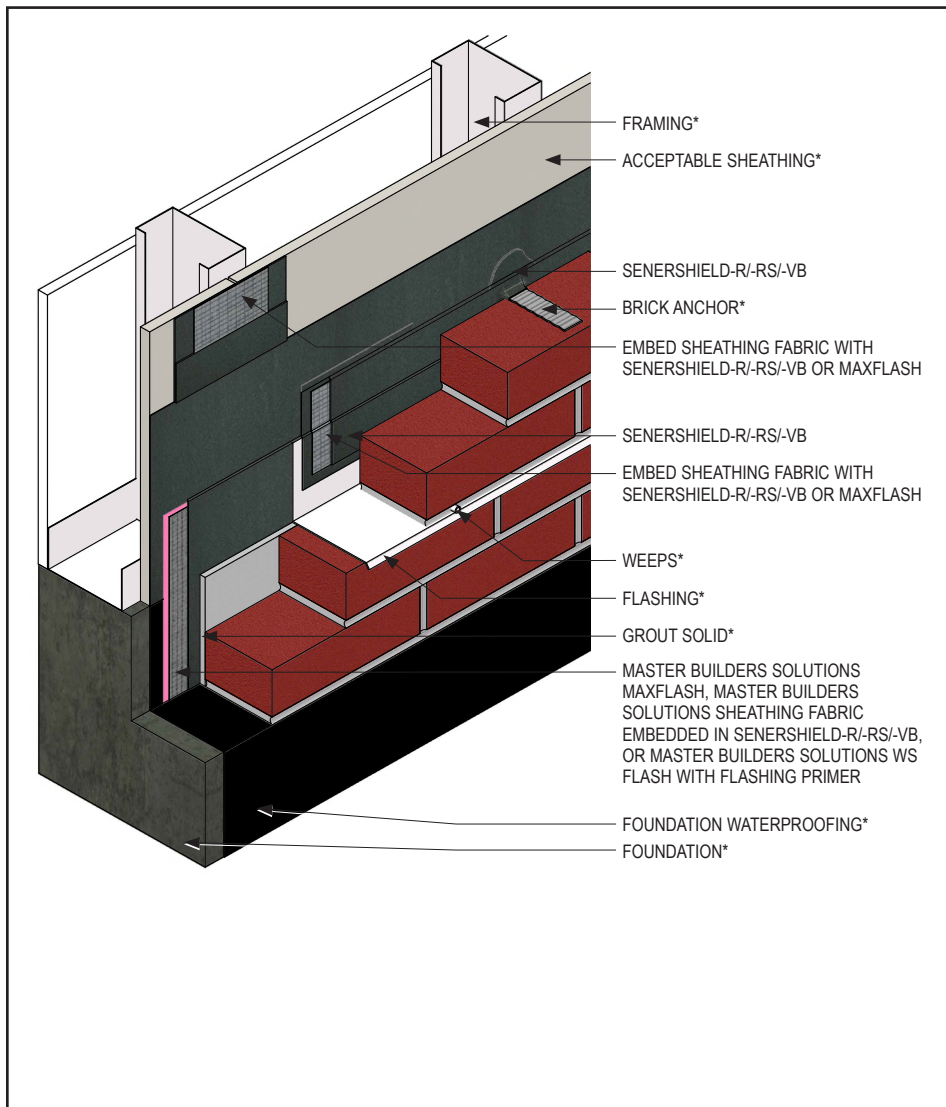
AWRB-30

2109

(\*NOTE: BY OTHERS)

This detail represents Master Builders Solutions Construction Systems US, LLC (hereinafter Master Builders Solutions) latest recommendations. It is presented in good faith by Master Builders Solutions. The detail is subject to change without notice. Master Builders Solutions accepts no liability for the end use of the detail. For conditions not shown, consult Master Builders Solutions for review of specific detail.

## Senershield-R/-RS/-VB TYPICAL TERMINATION AT GRADE – BRICK



- Install Master Builders Solutions materials in accordance with current installation instructions.
- Unsatisfactory conditions shall be reported to the General Contractor and corrected before the application of Master Builders Solutions products.
- Ensure Senershield-R/-RS/-VB fully covers Master Builders Solutions WS Flash at overlap.

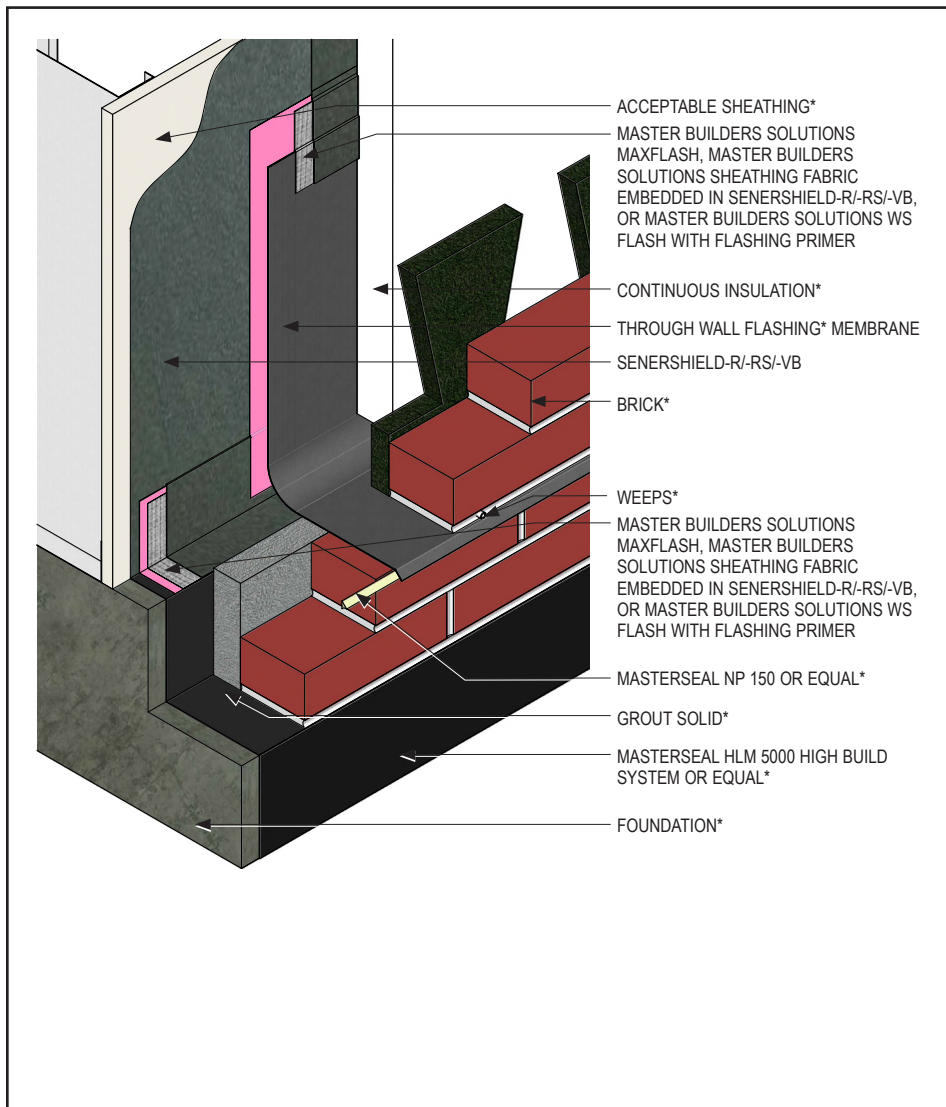
AWRB-31

2109

(\*NOTE: BY OTHERS)

This detail represents Master Builders Solutions Construction Systems US, LLC (hereinafter Master Builders Solutions) latest recommendations. It is presented in good faith by Master Builders Solutions. The detail is subject to change without notice. Master Builders Solutions accepts no liability for the end use of the detail. For conditions not shown, consult Master Builders Solutions for review of specific detail.

## Senershield-R/-RS/-VB TYPICAL TERMINATION AT FOUNDATION INCORPORATING SHEATHING FABRIC WITH THROUGH WALL FLASHING – BRICK



- Install Master Builders Solutions materials in accordance with current installation instructions.
- Unsatisfactory conditions shall be reported to the General Contractor and corrected before the application of Master Builders Solutions products.
- Air space between sheathing and brick per design (not shown).
- Extend flashing vertically up the backing to 8" (203 mm) minimum height.

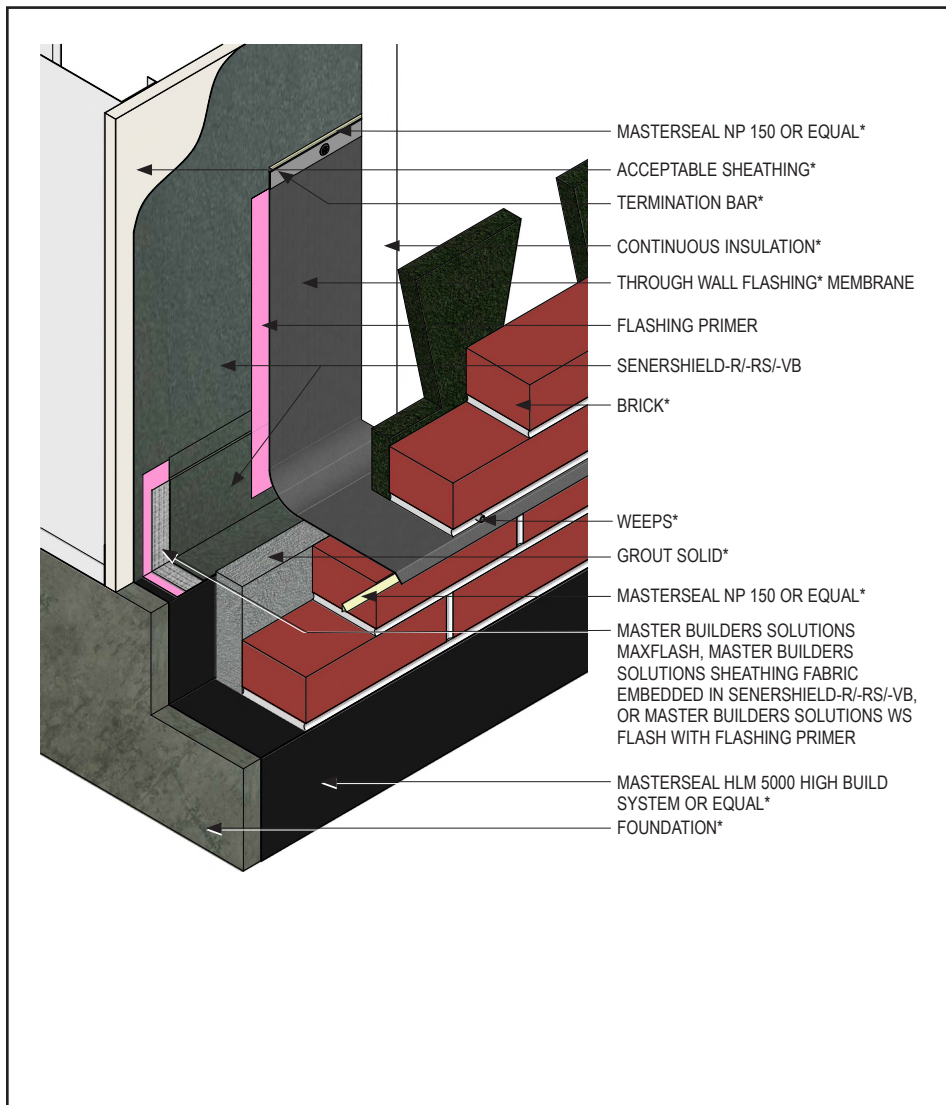
AWRB-32

2109

(\*NOTE: BY OTHERS)

This detail represents Master Builders Solutions Construction Systems US, LLC (hereinafter Master Builders Solutions) latest recommendations. It is presented in good faith by Master Builders Solutions. The detail is subject to change without notice. Master Builders Solutions accepts no liability for the end use of the detail. For conditions not shown, consult Master Builders Solutions for review of specific detail.

## Senershield-R/-RS/-VB TYPICAL TERMINATION AT FOUNDATION INCORPORATING TERMINATION BAR WITH THROUGH WALL FLASHING – BRICK



- Install Master Builders Solutions materials in accordance with current installation instructions.
- Unsatisfactory conditions shall be reported to the General Contractor and corrected before the application of Master Builders Solutions products.
- Air space between sheathing and brick per design (not shown).
- Extend flashing vertically up the backing to 8" (203 mm) minimum height.

AWRB-33

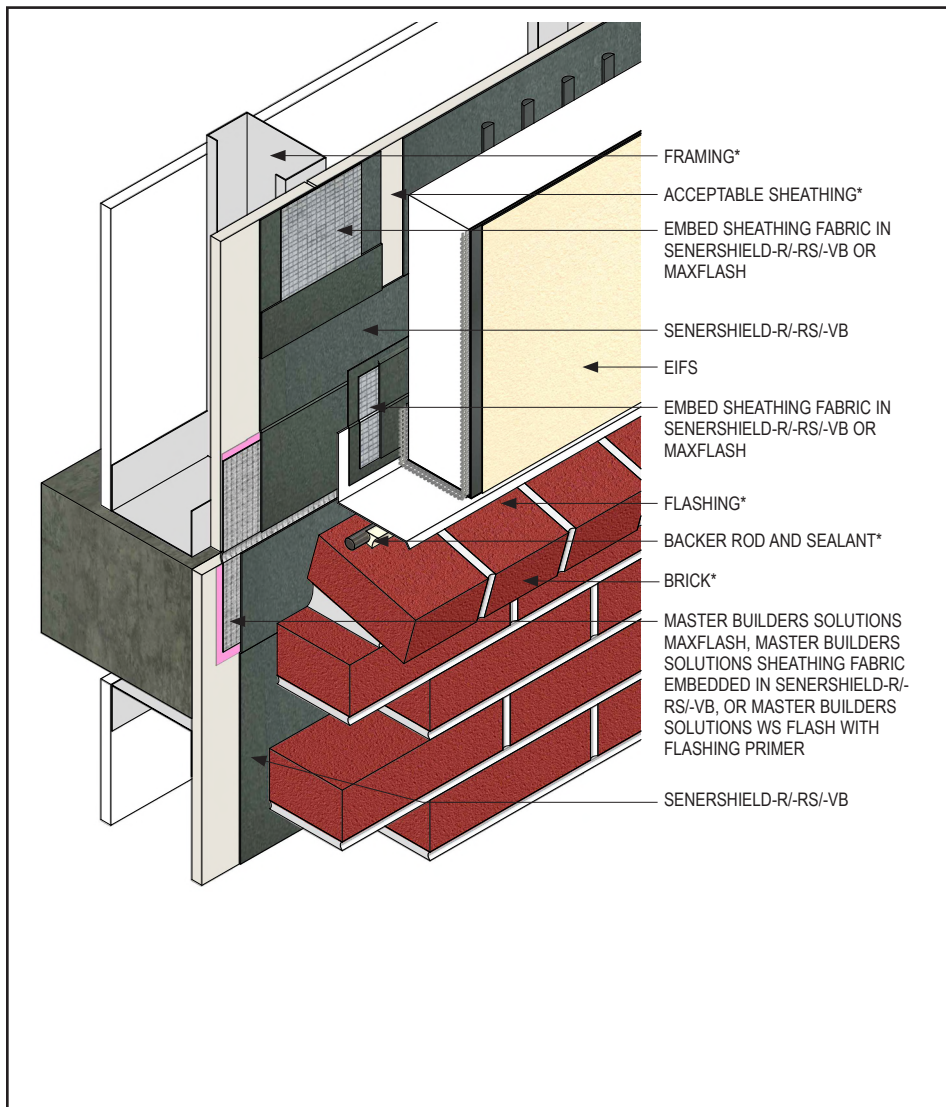
2109

(\*NOTE: BY OTHERS)

This detail represents Master Builders Solutions Construction Systems US, LLC (hereinafter Master Builders Solutions) latest recommendations. It is presented in good faith by Master Builders Solutions. The detail is subject to change without notice. Master Builders Solutions accepts no liability for the end use of the detail. For conditions not shown, consult Master Builders Solutions for review of specific detail.

## Senershield-R/-RS/-VB

### TYPICAL EIFS ABUTMENT TO BRICK WITH DRAINAGE AT FLOORLINE



- Install Master Builders Solutions materials in accordance with current installation instructions.
- Unsatisfactory conditions shall be reported to the General Contractor and corrected before the application of Master Builders Solutions products.
- Install Master Builders Solutions materials in accordance with current installation instructions.
- Ensure Senershield-R/-RS/-VB fully covers Master Builders Solutions WS Flash at floorline.
- Provide sufficient slack in the Master Builders Solutions WS Flash at expansion joint to allow for movement.

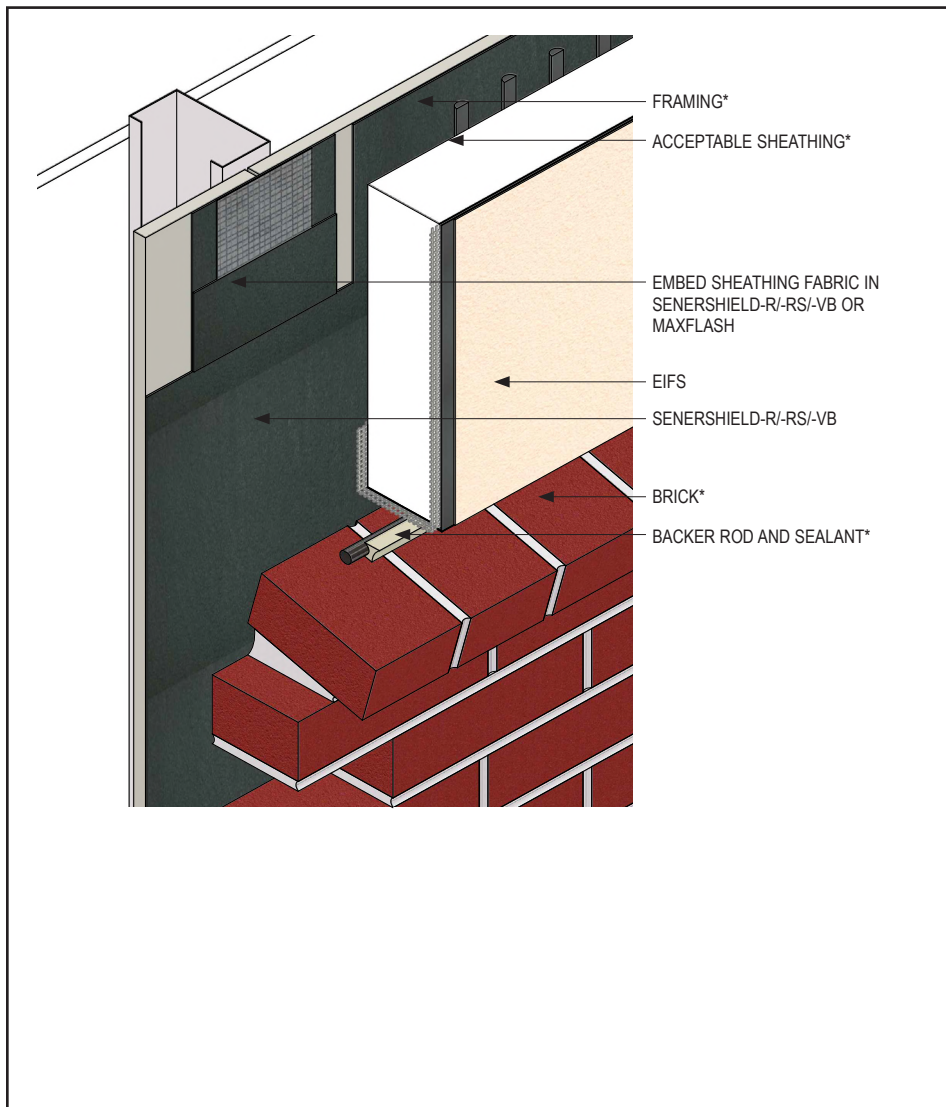
AWRB-34

2109

(\*NOTE: BY OTHERS)

This detail represents Master Builders Solutions Construction Systems US, LLC (hereinafter Master Builders Solutions) latest recommendations. It is presented in good faith by Master Builders Solutions. The detail is subject to change without notice. Master Builders Solutions accepts no liability for the end use of the detail. For conditions not shown, consult Master Builders Solutions for review of specific detail.

## Senershield-R/-RS/-VB TYPICAL EIFS ABUTMENT TO BRICK



- Install Master Builders Solutions materials in accordance with current installation instructions.
- Unsatisfactory conditions shall be reported to the General Contractor and corrected before the application of Master Builders Solutions products.
- Ensure drainage plane is continuous (unblocked); otherwise install flashing with drainage provision as show in Detail AWRB-34.

AWRB-35

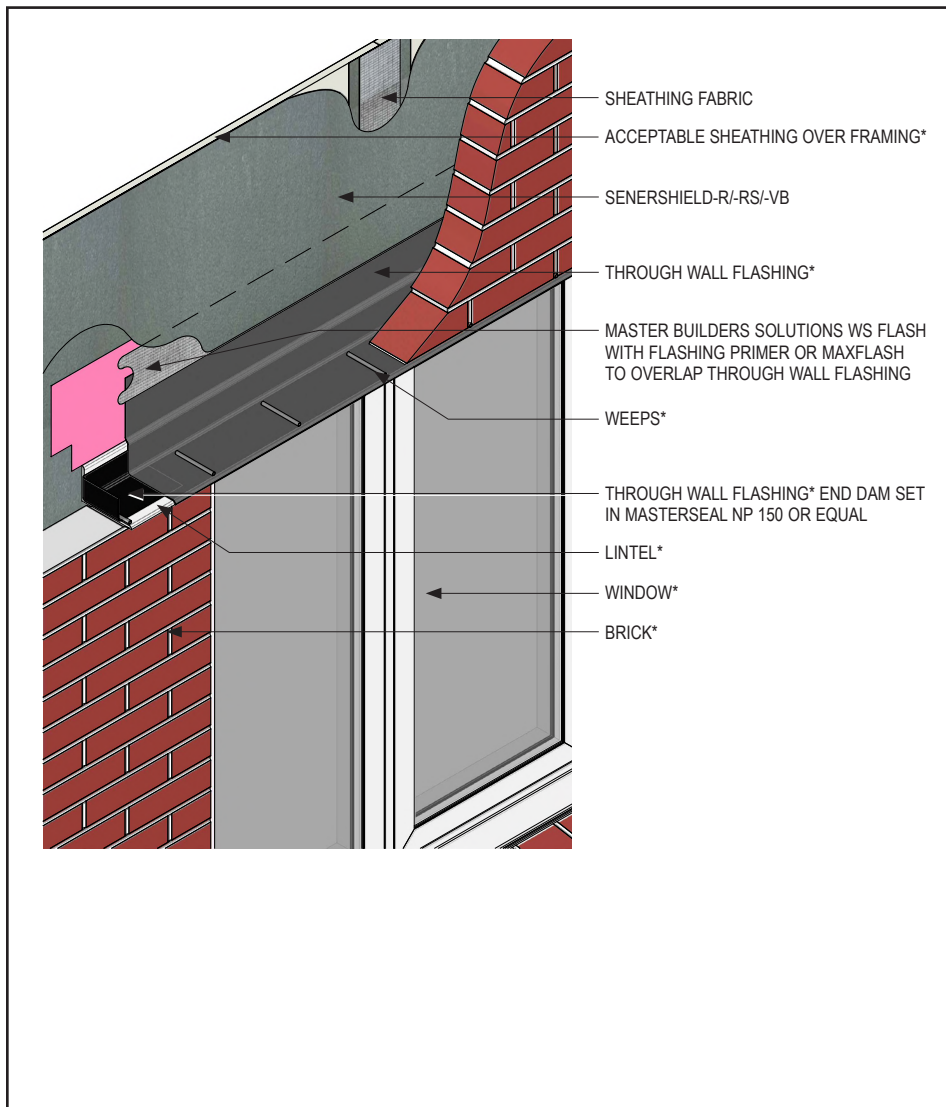
2109

(\*NOTE: BY OTHERS)

This detail represents Master Builders Solutions Construction Systems US, LLC (hereinafter Master Builders Solutions) latest recommendations. It is presented in good faith by Master Builders Solutions. The detail is subject to change without notice. Master Builders Solutions accepts no liability for the end use of the detail. For conditions not shown, consult Master Builders Solutions for review of specific detail.

## Senershield-R/-RS/-VB

### TYPICAL THROUGH WALL FLASHING AT HEAD – BRICK



- Install Master Builders Solutions materials in accordance with current installation instructions.
- Unsatisfactory conditions shall be reported to the General Contractor and corrected before the application of Master Builders Solutions products.
- Embed Master Builders Solutions Sheathing Fabric in Senershield-R/-RS/-VB.
- Center Master Builders Solutions WS Flash so half of the width covers Through Wall Flashing\* and half covers the primed substrate.
- Through Wall Flashing\* can be folded to create an end dam. Ensure that seams are sealed with MasterSeal NP 150.

AWRB-36

2109

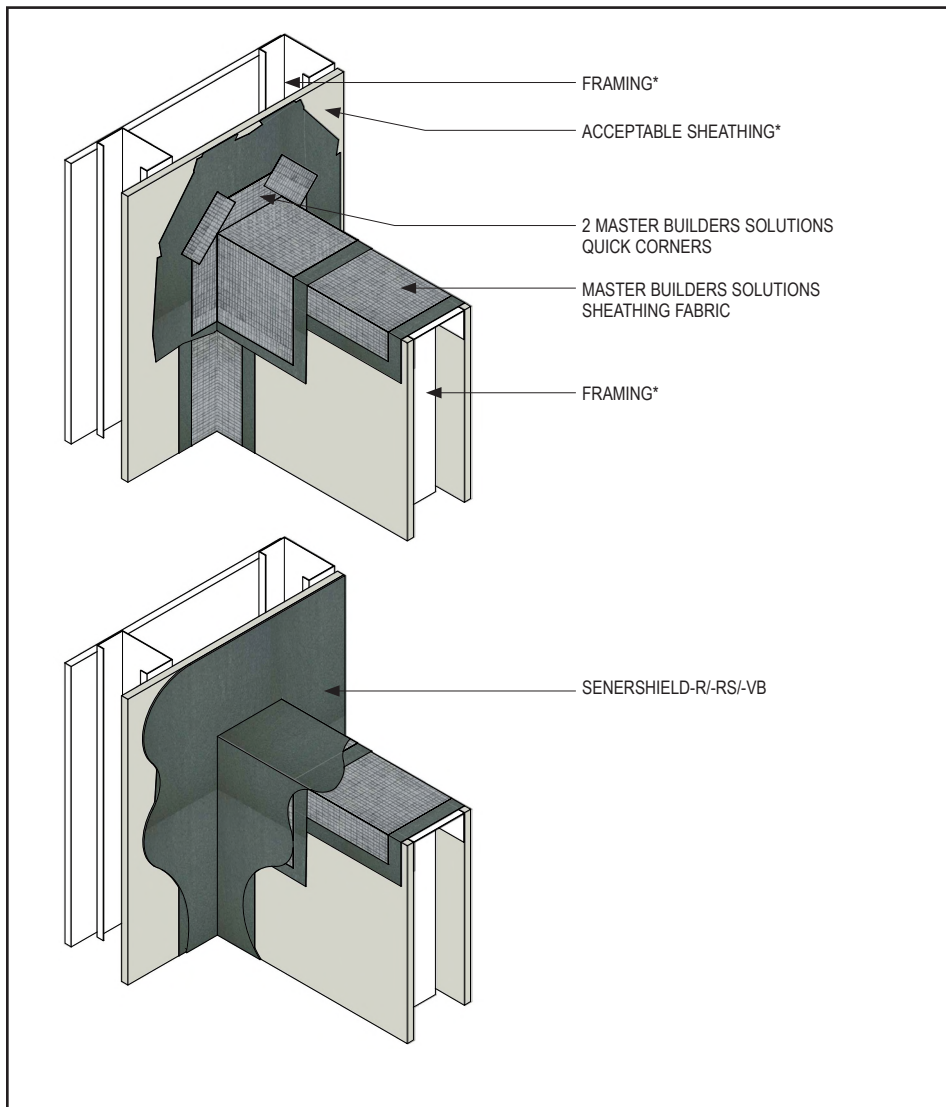
(\*NOTE: BY OTHERS)

This detail represents Master Builders Solutions Construction Systems US, LLC (hereinafter Master Builders Solutions) latest recommendations. It is presented in good faith by Master Builders Solutions. The detail is subject to change without notice. Master Builders Solutions accepts no liability for the end use of the detail. For conditions not shown, consult Master Builders Solutions for review of specific detail.



## Senershield-R/-RS/-VB

### TYPICAL SADDLE APPLICATION INCORPORATING SHEATHING FABRIC



- Install Master Builders Solutions materials in accordance with current installation instructions.
- Unsatisfactory conditions shall be reported to the General Contractor and corrected before the application of Master Builders Solutions products.
- Embed Master Builders Solutions Quick Corner in Senershield-R/-RS/-VB.
- Embed Master Builders Solutions Sheathing Fabric in Senershield-R/-RS/-VB.
- Two Quick Corners are used, one on each side of the saddle.

AWRB-37

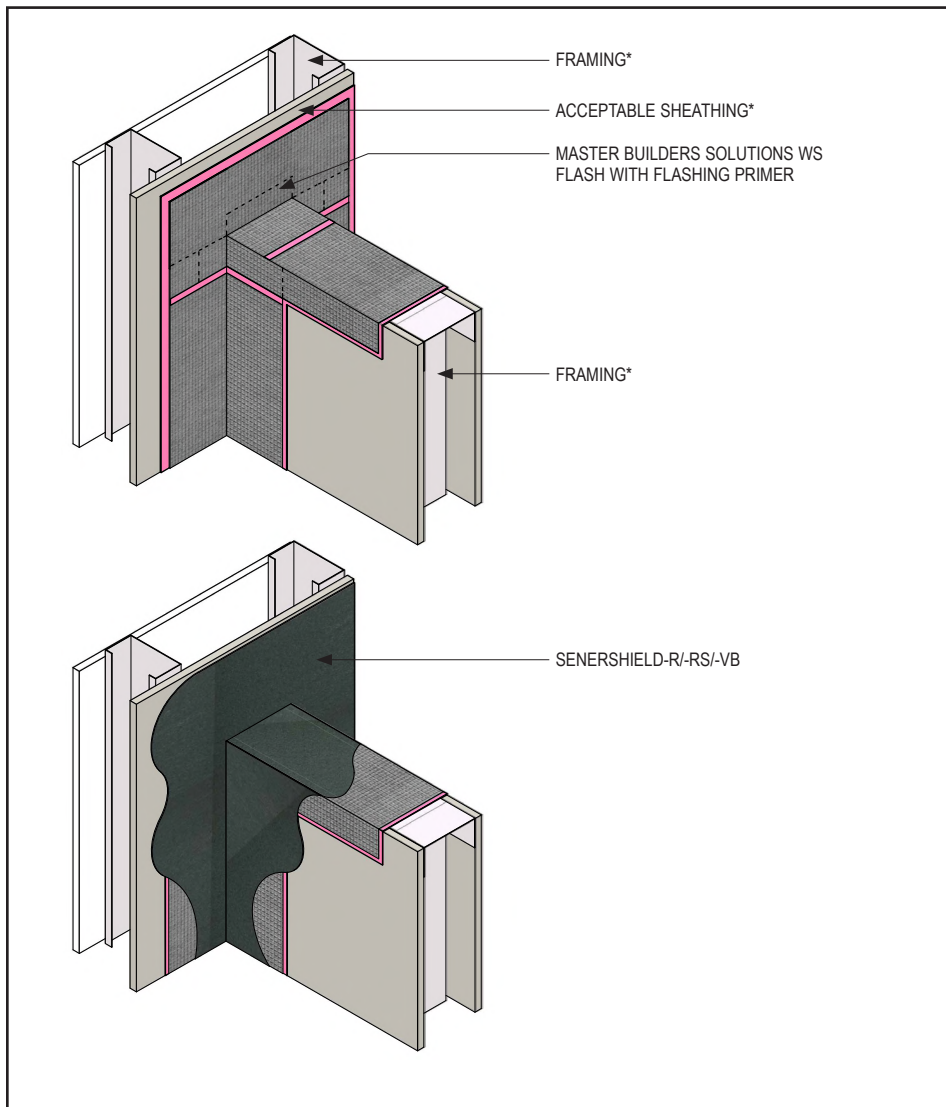
2109

(\*NOTE: BY OTHERS)

This detail represents Master Builders Solutions Construction Systems US, LLC (hereinafter Master Builders Solutions) latest recommendations. It is presented in good faith by Master Builders Solutions. The detail is subject to change without notice. Master Builders Solutions accepts no liability for the end use of the detail. For conditions not shown, consult Master Builders Solutions for review of specific detail.

## Senershield-R/-RS/-VB

### TYPICAL SADDLE APPLICATION INCORPORATING MASTER BUILDERS SOLUTIONS WS FLASH



- Install Master Builders Solutions materials in accordance with current installation instructions.
- Unsatisfactory conditions shall be reported to the General Contractor and corrected before the application of Master Builders Solutions products.
- All Master Builders Solutions WS Flash overlaps shall be primed with Master Builders Solutions Flashing Primer.

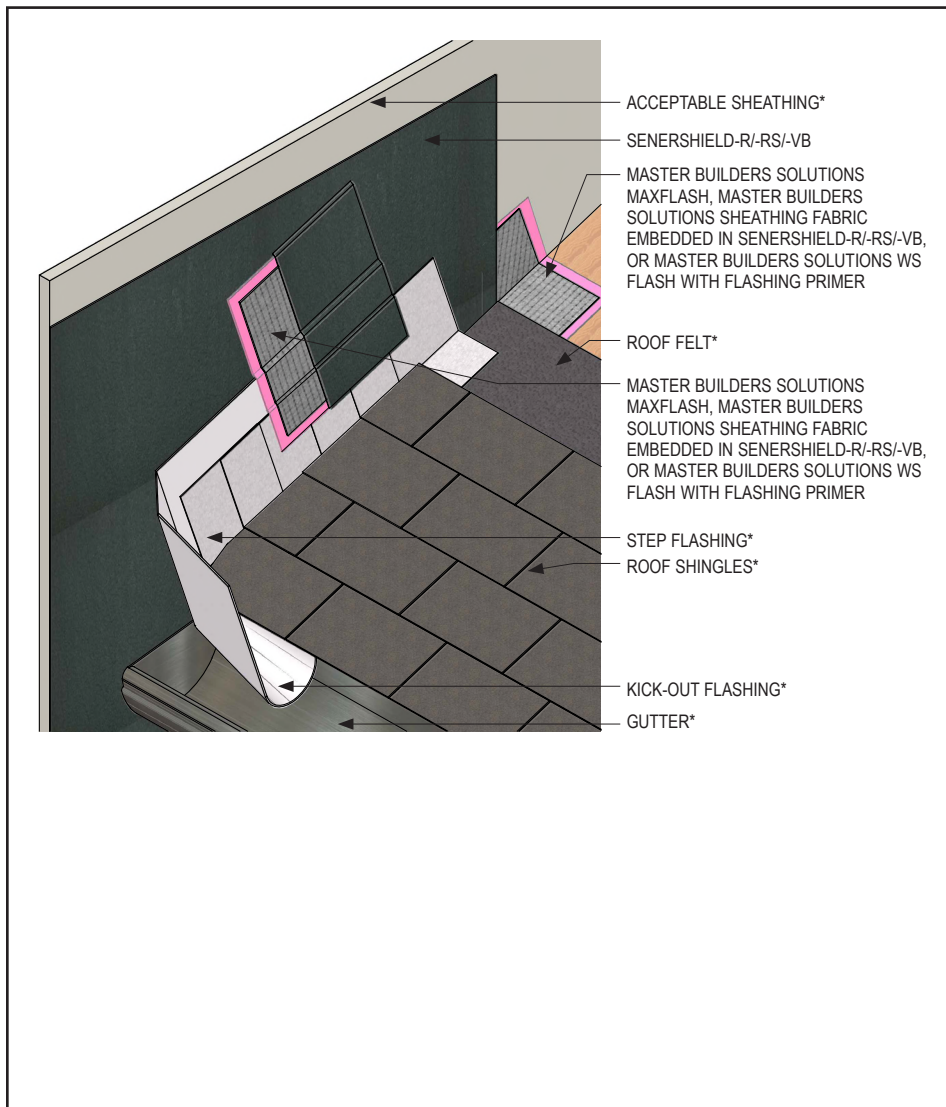
AWRB-38

2109

(\*NOTE: BY OTHERS)

This detail represents Master Builders Solutions Construction Systems US, LLC (hereinafter Master Builders Solutions) latest recommendations. It is presented in good faith by Master Builders Solutions. The detail is subject to change without notice. Master Builders Solutions accepts no liability for the end use of the detail. For conditions not shown, consult Master Builders Solutions for review of specific detail.

## Senershield-R/-RS/-VB TYPICAL KICK-OUT FLASHING



- Install Master Builders Solutions materials in accordance with current installation instructions.
- Unsatisfactory conditions shall be reported to the General Contractor and corrected before the application of Master Builders Solutions products.
- Ensure Senershield-R/-RS/-VB fully covers Master Builders Solutions WS Flash.
- Where Master Builders Solutions WS Flash is installed over the flashing, ensure termination occurs a minimum of 2" above the roof.

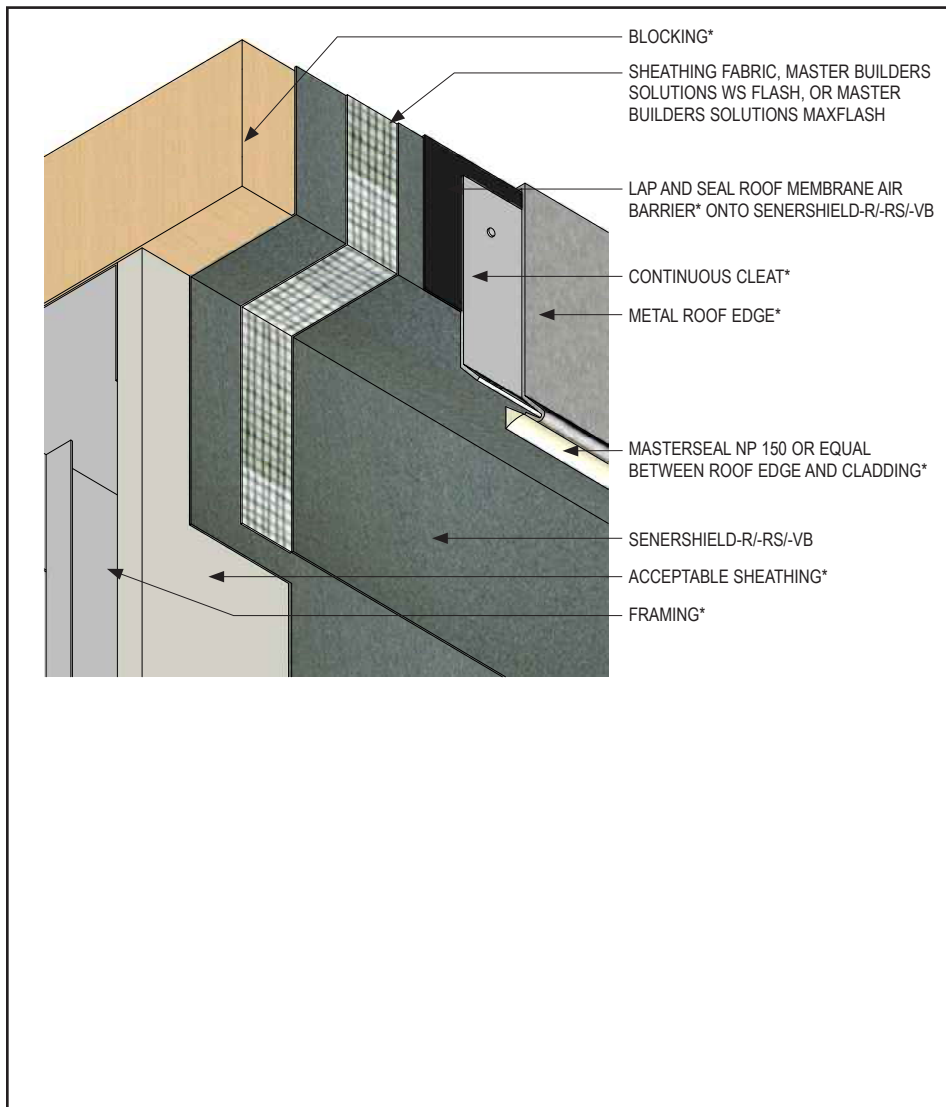
AWRB-39

2109

(\*NOTE: BY OTHERS)

This detail represents Master Builders Solutions Construction Systems US, LLC (hereinafter Master Builders Solutions) latest recommendations. It is presented in good faith by Master Builders Solutions. The detail is subject to change without notice. Master Builders Solutions accepts no liability for the end use of the detail. For conditions not shown, consult Master Builders Solutions for review of specific detail.

## Senershield-R/-RS/-VB TYPICAL ROOF EDGE FLASHING



- Install Master Builders Solutions materials in accordance with current installation instructions.
- Unsatisfactory conditions shall be reported to the General Contractor and corrected before the application of Master Builders Solutions products.
- MaxFlash and Master Builders Solutions WS Flash may be used as an alternate to provide an air/water-resistive barrier at transition of sheathing to blocking.
- Ensure continuity of air barrier is maintained.
- Avoid solvent-based adhesives/primers where roofing laps Senershield-R/-RS/-VB.

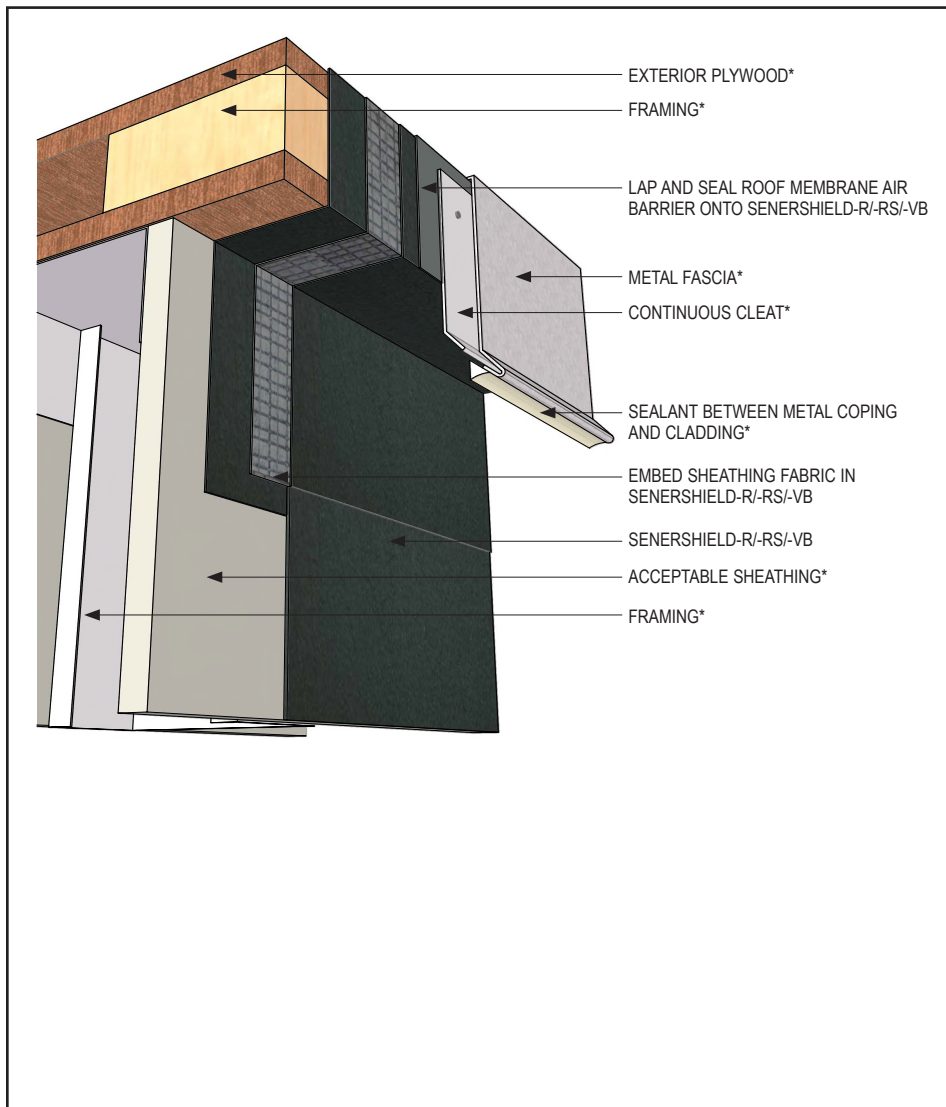
AWRB-40

2109

(\*NOTE: BY OTHERS)

This detail represents Master Builders Solutions Construction Systems US, LLC (hereinafter Master Builders Solutions) latest recommendations. It is presented in good faith by Master Builders Solutions. The detail is subject to change without notice. Master Builders Solutions accepts no liability for the end use of the detail. For conditions not shown, consult Master Builders Solutions for review of specific detail.

## Senershield-R/-RS/-VB TYPICAL ROOF EDGE FLASHING



- Install Master Builders Solutions materials in accordance with current installation instructions.
- Unsatisfactory conditions shall be reported to the General Contractor and corrected before the application of Master Builders Solutions products.
- Master Builders Solutions WS Flash may be used as an alternate to provide an air/water-resistive barrier at transition of sheathing to blocking.

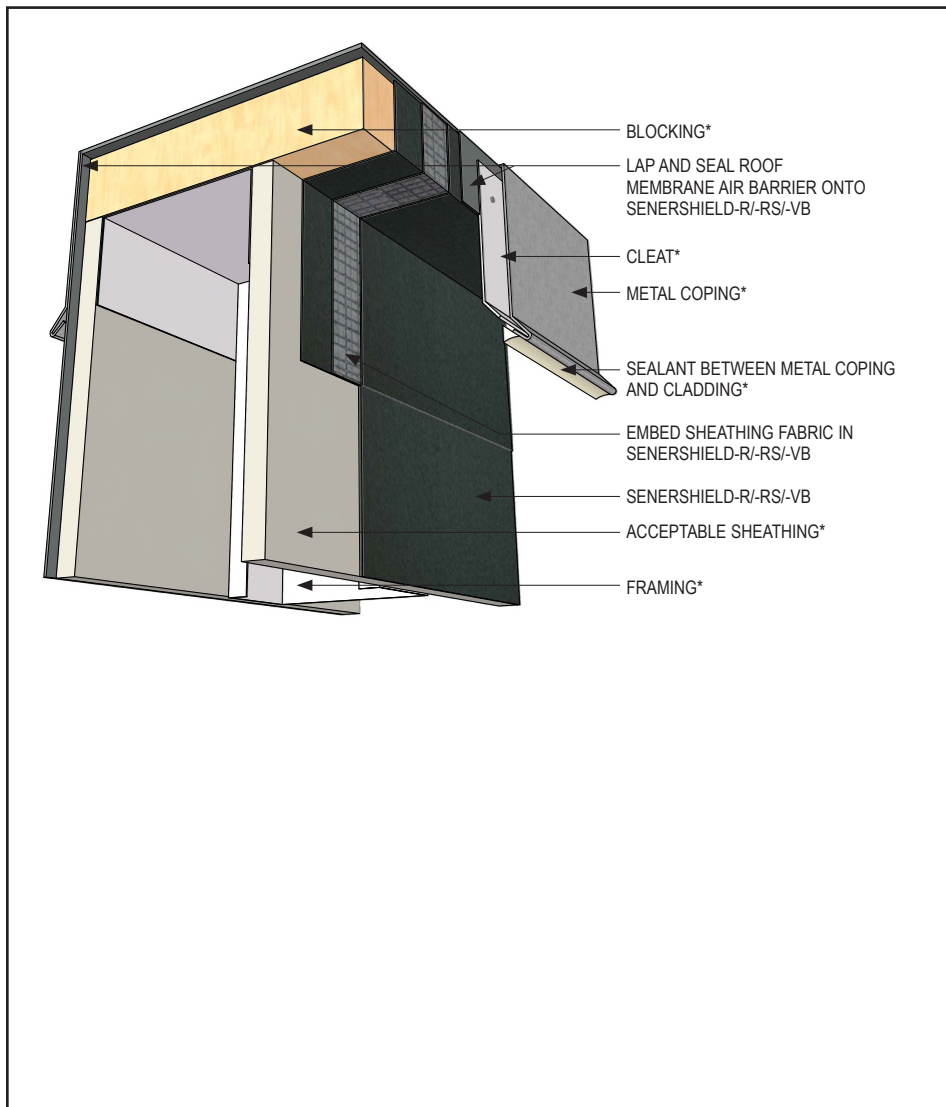
AWRB-41

2109

(\*NOTE: BY OTHERS)

This detail represents Master Builders Solutions Construction Systems US, LLC (hereinafter Master Builders Solutions) latest recommendations. It is presented in good faith by Master Builders Solutions. The detail is subject to change without notice. Master Builders Solutions accepts no liability for the end use of the detail. For conditions not shown, consult Master Builders Solutions for review of specific detail.

## Senershield-R/-RS/-VB TYPICAL PARAPET CAP FLASHING



- Install Master Builders Solutions materials in accordance with current installation instructions.
- Unsatisfactory conditions shall be reported to the General Contractor and corrected before the application of Master Builders Solutions products.
- Master Builders Solutions WS Flash may be used as an alternate to provide an air/water-resistive barrier at transition of sheathing to blocking.

AWRB-42

2109

(\*NOTE: BY OTHERS)

This detail represents Master Builders Solutions Construction Systems US, LLC (hereinafter Master Builders Solutions) latest recommendations. It is presented in good faith by Master Builders Solutions. The detail is subject to change without notice. Master Builders Solutions accepts no liability for the end use of the detail. For conditions not shown, consult Master Builders Solutions for review of specific detail.