



ClarkDietrich.

SOLVING CONSTRUCTION PROBLEMS. FROM FRAME TO FINISH.

When it comes to meeting wall and ceiling challenges, and delivering peace of mind, ClarkDietrich leads by example. Today, we're staying at the forefront by refocusing our resources to bring smarter solutions and to better serve our customers.

Vinyl Corp., a brand long associated with our company, will now officially bear our name. All of the same trusted products will be available through ClarkDietrich—which offers an ever-expanding lineup of interior and exterior finishing products.

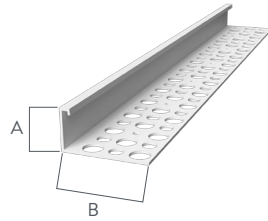
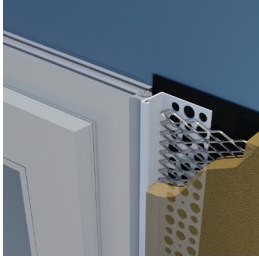
Of course, ClarkDietrich also stands for the broadest portfolio in cold-formed steel framing, plus nationwide technical support and engineering services.

From the highest-quality standard items, to unmatched specialty products, to completely customized offerings, we'll see to it that your projects will succeed with durability and precision.

Casing Beads

ClarkDietrich has casing beads to meet every application, with a wide range of grounds, weep options and flange heights. Use the Bandmaker™ Series casing beads for applications with heavier cementitious thickness and the Archmaker™ series for curved applications. Many casing bead flanges can incorporate the new E-Flange™ design for 80% more stucco embedment compared to traditional flat flange profiles.

Casing Bead / Plaster Stop

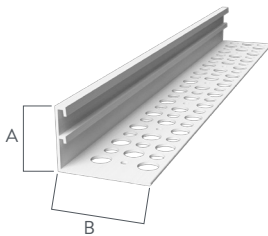


Terminates stucco and plaster against windows, doors, and other dissimilar materials.

Product Code	(A) Ground	(B) Flange	Length	Pieces per Box
6625	1/4"	1-3/4"	10'	100
6638	3/8"	1-3/4"	10'	100
6650	1/2"	1-3/4"	10'	100
6658	5/8"	1-3/4"	10'	100
6675	3/4"	1-3/4"	10'	75
6678	7/8"	1-3/4"	10'	75
66100	1"	1-3/4"	10'	75

Note: If weep holes are required, add W to the product code, example 6625W.

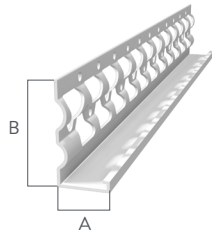
Bandmaker™ Series Casing Bead



Bandmaker Series Casing Beads are designed with a reinforcing rib to assist keying heavy material fills when bands are used in architectural designs.

Product Code	(A) Ground	(B) Flange	Length	Pieces per Box
66100T	1"	1-3/4"	10'	75
66125	1-1/4"	1-3/4"	10'	50
66150	1-1/2"	1-3/4"	10'	50
66175	1-3/4"	1-3/4"	10'	40
66200	2"	1-3/4"	10'	40

E-Flange Casing Bead



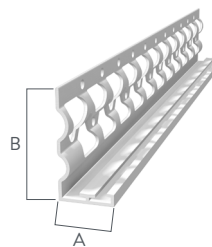
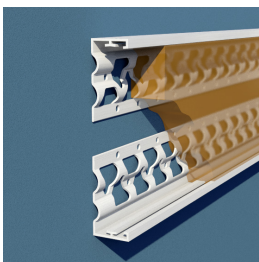
Designed to terminate stucco and plaster against doors, windows and dissimilar materials. The E-Flange profile provides 80% more stucco embedment than traditional flat flange profiles.

Product Code	(A) Ground	(B) Flange Width	Length	Pieces per Box
6658EF	5/8"	1-3/4"	10'	100
6675EF	3/4"	1-3/4"	10'	75
6678EF	7/8"	1-3/4"	10'	75
66100EF	1"	1-3/4"	10'	75

U.S. Patent Number D842,496

Note: If weep holes are required, add W to the product code, example: 6658EFW.

E-Flange Bandmaker™ Casing Bead



Designed with a reinforcing rib to assist in keying heavy material fills when "bands" are used in architectural designs. The E-Flange profile provides 80% more stucco embedment than traditional flat flange profiles.

Product Code	(A) Ground	(B) Flange Width	Length	Pieces per Box
66100TEF	1"	1-3/4"	10'	75
66125EF	1-1/4"	1-3/4"	10'	50
66150EF	1-1/2"	1-3/4"	10'	50
66175EF	1-3/4"	1-3/4"	10'	40
66200EF	2"	1-3/4"	10'	40

U.S. Patent Number D842,496