

## LOX-ALL® ADJUSTABLE REINFORCEMENT

**2X** Products on this page feature the **NEW 2-HOOK** with over **100% more strength** than traditional ties. See pages 2-3 for more information on this innovative new product!

### TRUSS Type

**165 Adjustable Truss**  
Cavity / Insulated Wall



**170 Truss LOX-ALL®**  
Adjustable Eye-Wire



H&B manufactures its stainless steel wire from a minimum of **95%** recycled materials.

**165 & 265** - have horizontal "winged loops" welded to the back-up reinforcing. The loops accept 2X-HOOK pintles to allow vertical adjustability while restraining transverse movement of the two wythes. Suitable for collar joint conditions, cavity walls or insulated walls.

#### **170 & 270 LOX-ALL® Adjustable Eye-Wire**

- Same features as above, with eyelets in lieu of loops.
- Pintle drops into snug eyelet as exterior wall is erected, tying both wythes together.
- Allows construction of interior wythe in advance of exterior wythe.
- Special design of pintle serves to mechanically secure insulation to the masonry back-up.

### LADDER Type

**265 Adjustable Ladder**  
Cavity / Insulated Wall



**270 Ladder LOX-ALL®**  
Adjustable Eye-Wire



**Standard Sizes:** 4" wall - 16" wall. Other widths available on special request. Adjustable reinforcing made to accommodate various insulation / air dimensions. Eyes and Pintles are 3/16" dia.

**(S) Standard:** 9 ga. side rods x 9 ga. cross rods.

**(EH) Extra Heavy:** 3/16" side rods x 9 ga. cross rods.

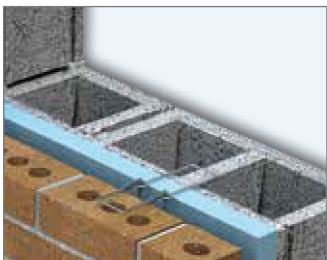
**(SHD) Super Heavy Duty:** 3/16" side rods x 3/16" cross rods.

For seismic conditions add **"-SH"** to any product number.  
Example: 270-SH

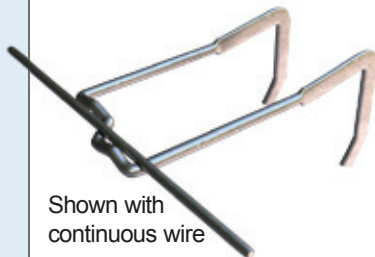
**Finishes:** Hot Dipped Galvanized, Stainless Steel Type 304 or 316.

**U.S. Patent:** 8,613,175. Other Patents Pending.

#### Adjustable Wall Ties



#### SH - Seismic Hook



Shown with  
continuous wire



#### PINTLE SECTION:

STANDARD HOOK					
TIE NO.	300H	400H	500H	600H	700H
SIZE	3"	4"	5"	6"	7"

#### SEISMIC HOOK

#### EYE SECTION:

STANDARD OR SEISMIC HOOK				
TIE NO.	275E	350E	475E	575E
SIZE	2 3/4"	3 1/2"	4 3/4"	5 3/4"

#### Finishes:

- Hot Dipped Galvanized
- Type 304 or Type 316 Stainless Steel

H&B'S SEISMIC HOOK is "swaged" (indented) in two places to accommodate either a 9 gauge or 3/16" continuous wire. As shown, a channel is formed that braces the continuous wire and holds it in place. Suitable for standard 3/8" joints.

Specify Seismic Hook with any adjustable wire, such as the 170-SH.

**Finishes:** Hot Dipped Galvanized and Stainless Steel.

**U.S. Patents:** 6,789,365; 7,325,366; 8,096,090 & 8,613,175  
Other Patents Pending

HOHMANN & BARNARD's wire products conform to ASTM A 951 standard specifications for masonry joint reinforcement