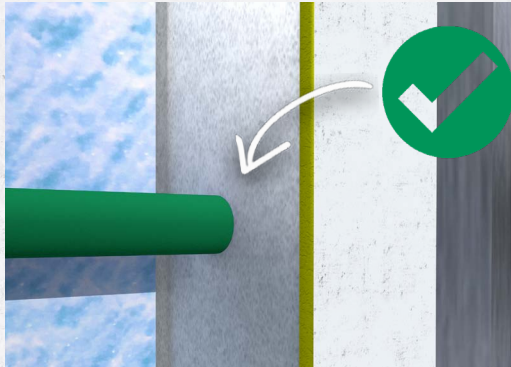
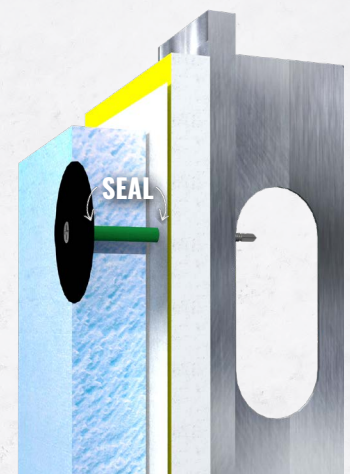


Hole created in WRB / air barrier caused by blind fastener penetrations



Grip-Deck TubeSeal™ compresses against WRB / air barrier to help seal out air and water



CONTINUOUS INSULATION ATTACHMENT. AIR BARRIER PERFORMANCE.

The Grip-Deck TubeSeal™ accessory from TRUFAST® Walls is designed to help seal blind fastener penetrations of your WRB and air-barrier when mechanically attaching continuous insulation. Mineral wool and rigid foam insulation must be mechanically attached, and often over a WRB or air-barrier. With the Grip-Deck TubeSeal™ you enable sealing on the facer of the WRB or air-barrier sandwiched between the substrate and the layer of continuous insulation.

PRODUCT FEATURES

- Grip-Deck Tube-Seal™ aids in sealing blind fastener penetrations of a WRB or air-barrier.
- Tube inserts through the insulation then compresses on the surface of the WRB/Air barrier AND on the underside of the washer effectively creating a seal against air and moisture penetration.
- Inside diameter designed to fit #8 and #10 dia. Grip-Deck® screws.
- Tube available in multiple lengths for insulation nominal thickness of 1", 1.5", 2", 2.5", 3", 3.5", and 4".
- UV resistant ether-based polyurethane tube is suitable for all weather climates.
- Available pre-assembled with screws/washers, or as an accessory to be assembled on the jobsite.
- Patented and/or patent pending.



SINCE 1823

ALTENLOH, BRINCK & CO. US, INC.
ALTENLOH, BRINCK & CO. - GROUP

TRUFAST
WALLS