

# MULTI-COMPONENT cartridge air guns

- All Albion AT-Line guns are available with Suitcase handles (add “-S” to the tool number) and rigid plastic carry cases (add “C” to the tool number).
- All tools easily change to one-handed operation with optional p/n 957-2 Suitcase Handle Adapter.



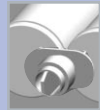
## AT400 Series

### Features:

- The AT400 accepts 1:1 or 2:1 cartridges with **no** change over parts required

### Tools in this Series:

- AT400-SC
- AT400-S
- AT400C
- AT400
- AT400X4-SC
- AT400X4-S
- AT400X4C
- AT400X4
- AT400X10-S
- AT400X10



400 Cartridge	400 Cartridge	400 Cartridge	400 Cartridge	400 Cartridge
Cartridge Ratio:	1:1	2:1	4:1	10:1
Outside Diameters:	1 <sup>3</sup> / <sub>4</sub> x 1 <sup>3</sup> / <sub>4</sub>	2 <sup>1</sup> / <sub>16</sub> x 1 <sup>15</sup> / <sub>32</sub>	1 <sup>15</sup> / <sub>16</sub> x 1 <sup>31</sup> / <sub>32</sub>	2 <sup>9</sup> / <sub>32</sub> x 2 <sup>3</sup> / <sub>32</sub>



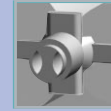
## AT600 Series

### Features:

- All 600 Series tools accept 1:1 or 2:1 cartridges (741-G02/741-G03) (change over parts included)

### Tools in this Series:

- AT600-SC
- AT600-S
- AT600C
- AT600
- AT600X2-SC
- AT600X2-S
- AT600X2C
- AT600X2



Cartridge Ratio:	1:1	2:1
	Volume:	300/300ml (22oz)
Outside Diameters:	2 x 2	2 x 1 <sup>15</sup> / <sub>32</sub>
Cartridge Part Number:	Cartridge "A"	741-G02
	Cartridge "B"	741-G02
	Cartridge "B"	741-G03



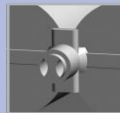
## AT1500 Series

### Features:

- All 1500 Series tools accept 1:1 cartridges
- AT1500X has a top load carriage
- AT1500 has a lighter and more rigid side-load carriage (easier suitcase change over)

### Tools in this Series:

- AT1500-SC
- AT1500-S
- AT1500C
- AT1500
- AT1500X-SC
- AT1500X-S
- AT1500XC
- AT1500X



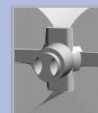
1500X Cartridge	1500X Cartridge
Cartridge Ratio:	1:1
Volume:	750/750ml (51oz)
Outside Diameters:	3 <sup>1</sup> / <sub>8</sub> x 3 <sup>1</sup> / <sub>8</sub>
Cartridge Part Number:	Cartridge "A"
	Cartridge "B"
	Cartridge "B"



## AT825, AT900 & AT1000

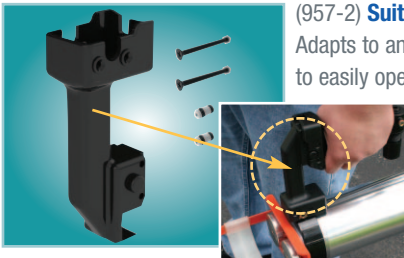
### Tools in this Series:

- AT825-SC
- AT825-S
- AT825C
- AT825
- AT900-SC
- AT900-S
- AT900C
- AT900
- AT1000-SC
- AT1000-S
- AT1000C
- AT1000



Cartridge Ratio:	10:1	3:1	2:1
	Volume:	825ml	1000ml
Outside Diameters:	750/75ml (26oz)	750/250ml	600/300ml (30.5oz)
Cartridge Part Number:	Cartridge "A"	3 <sup>1</sup> / <sub>8</sub> x 1 <sup>1</sup> / <sub>16</sub>	3 <sup>1</sup> / <sub>8</sub> x 1 <sup>7</sup> / <sub>8</sub>
	Cartridge "A"	741-G01	741-G07
	Cartridge "B"	741-G05	741-G02

## Replacement Parts



### (957-2) Suitcase Handle Adapter

Adapts to any AT series air gun. Allows the user to easily operate the gun with one hand. Makes dispensing to wall and floor applications easier. Includes two unions and hardware for assembly.



### (957-11) Handle Assembly AT1500

### (957-12) Handle Assembly AT825, AT900, AT1000

### (957-13) Handle Assembly AT400, AT600

Quick and easy assembly to air gun. Built-in adjustable regulator has line pressure fitting for use with spray applications. Includes two unions and hardware for assembly.

## Protect Your Investment

### AT-Line Carrying Case

Protect your investment in a professional quality tool with a hard, durable and convenient plastic carrying case. With a full length hinge and steel latches it will protect your air gun from damage. When ordering with a gun add the suffix C to any part number. To order separately specify part number 1001-1.

