

## QRW1 Drainage EIFS

### Class PI Drainage Exterior Insulation and Finish System

Master Wall Inc.® QRW1 system is a durable drainage system made for residential and light commercial construction. It's large insulation boards install easily and quickly over an approved water barrier. QRW1 may also use optional vent spacers or drainage mats for improved drainage.

#### Features & Benefits

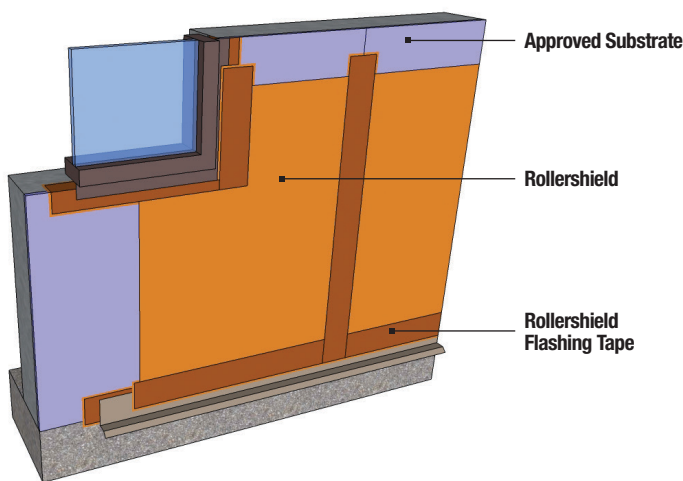
98% Drainage Efficiency  
 High Insulating Value (R-5 per inch)  
 Easy Application

#### System Use

Commercial  
 Residential

#### Attachment Method

Mechanical



## SuperiorShield AMB System

### Liquid Applied Air and Water Barrier

The SuperiorShield fluid-applied air and moisture barrier system can be installed under all claddings which require a secondary air and moisture barrier including brick, stucco, stone, siding, and Master Wall EIFS. The system consists of the following components:

- Rollershield RS or TG
- Rollershield Flashing Tape
- SuperiorFlash Liquid Flashing

Rollershield is applied with a foam roller or spray equipment to 10 mils dry thickness and forms a continuous water barrier. Sheathing board joints and transitions are reinforced with Rollershield Flashing Tape.

#### System Use

Commercial  
 Residential